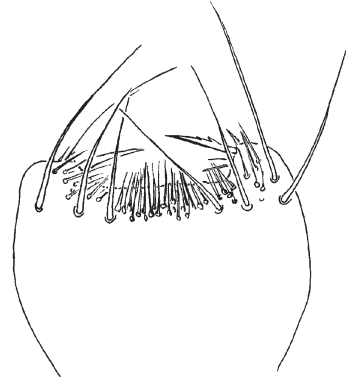
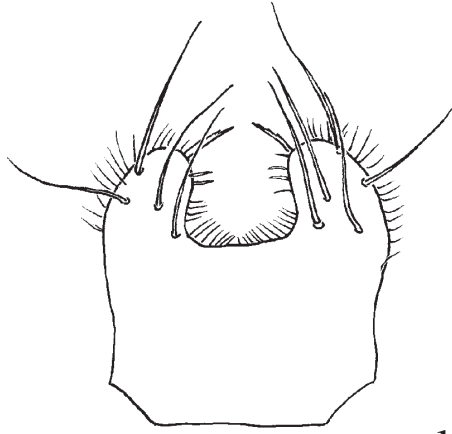


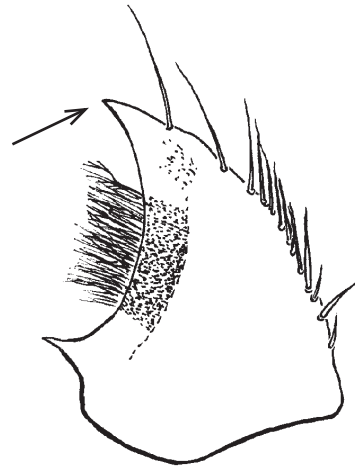
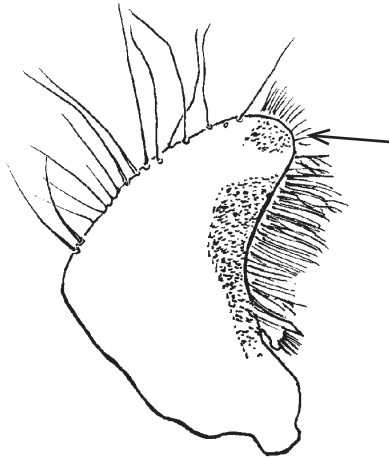
*Ora*

*Scirtes*



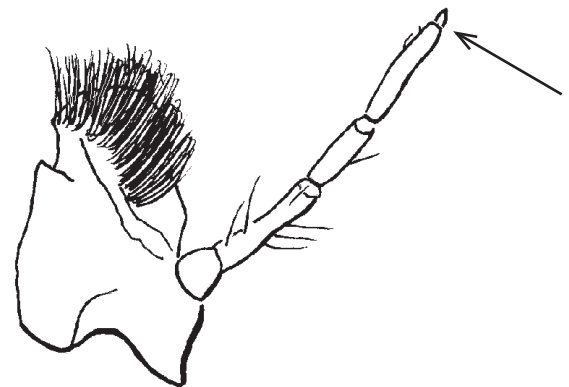
labrum

deeply emarginate in *Ora*



mandible

no apical tooth in *Ora*; tooth present in *Scirtes*



maxilla

apical palpomere long in *Ora*, short in *Scirtes*

Mature *Ora* larvae are much larger, over 10 mm; *Scirtes* are smaller, usually less than 8 mm