

# 5

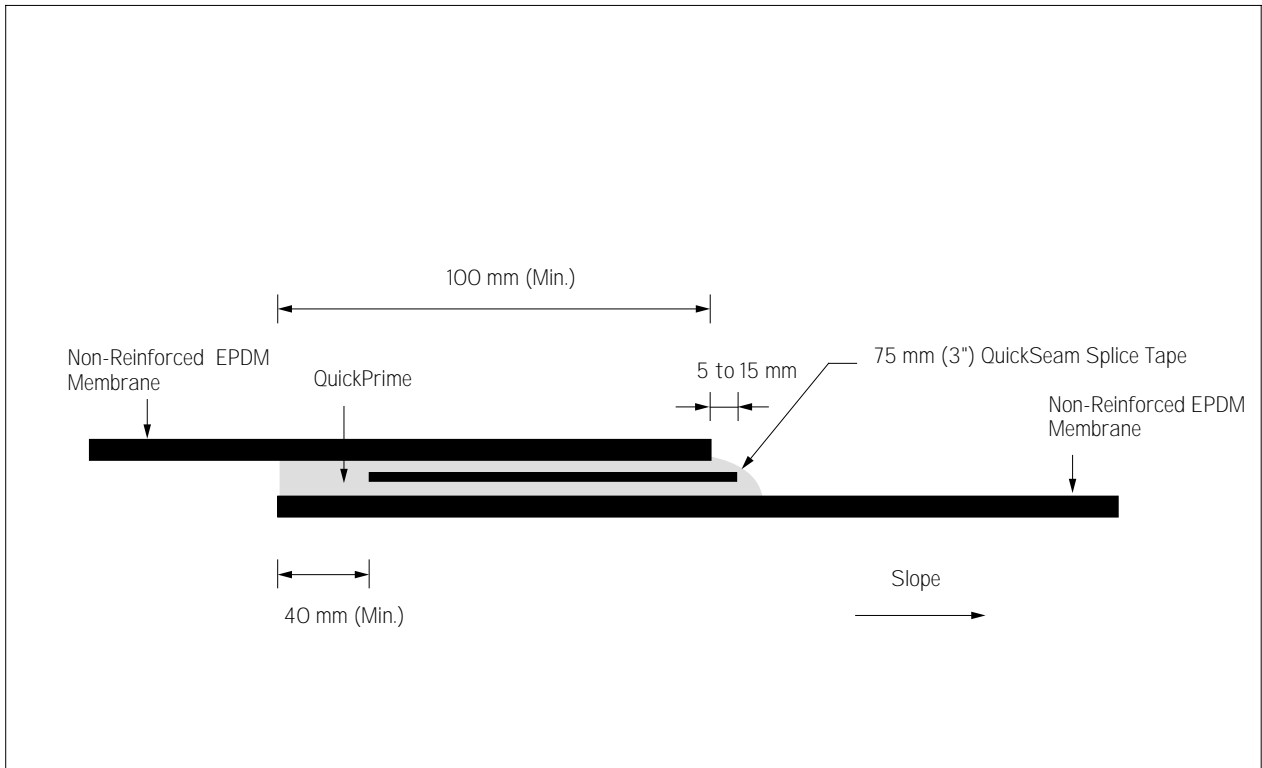
# INSTALLATION DETAILS

5.1 LAP SPLICES .....	p 143
5.2 ROOF EDGES .....	p 149
5.3 BASE TIE-INS .....	p 155
5.4 TERMINATIONS .....	p 163
5.5 EXPANSION JOINTS .....	p 171
5.6 PENETRATIONS .....	p 177
5.7 DRAINS .....	p 183
5.8 MISCELLANEOUS .....	p 187
5.9 CORNERS .....	p 191

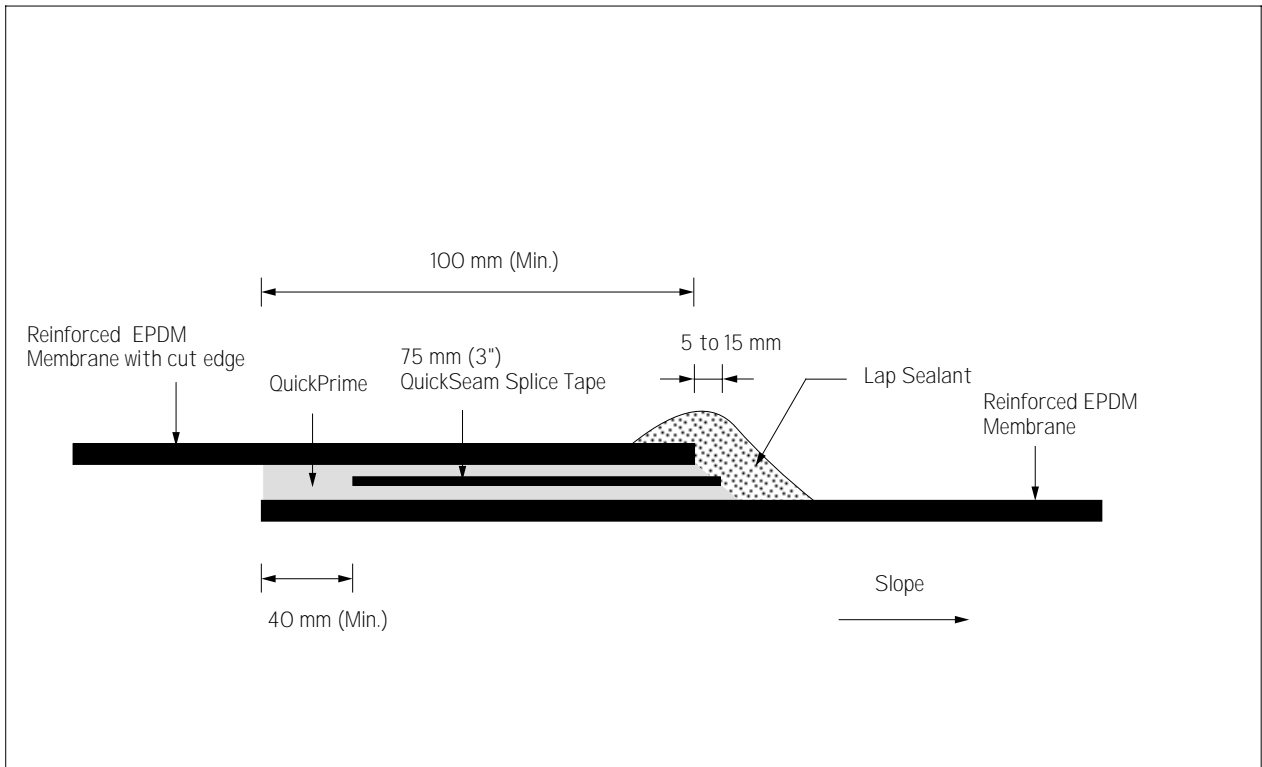


## 5.1 LAP SPLICES

DETAIL No.	EPDM - DETAIL	SYSTEMS
E-LS-1	Standard Seam Using 3 inch (75 mm) Tape	Ballast, Adhered, MAS, Inverted
E-LS-2	Standard Seam Using 75 mm (3 inch) Tape	Reinforced
E-LS-3	Seams Using Splice Adhesive	All
E-LS-4	Seam With Batten Bar Using 180 mm (7 inch) Tape	BIS
E-LS-5	Seam With Batten Bar Using 180 mm (7 inch) Tape	Reinforced
E-LS-6	Seam With Batten Bar Using Splice Adhesive	BIS, Reinforced
E-LS-7	QuickSeam Batten Cover	MAS
E-LS-8	QuickSeam Batten Cover	Reinforced

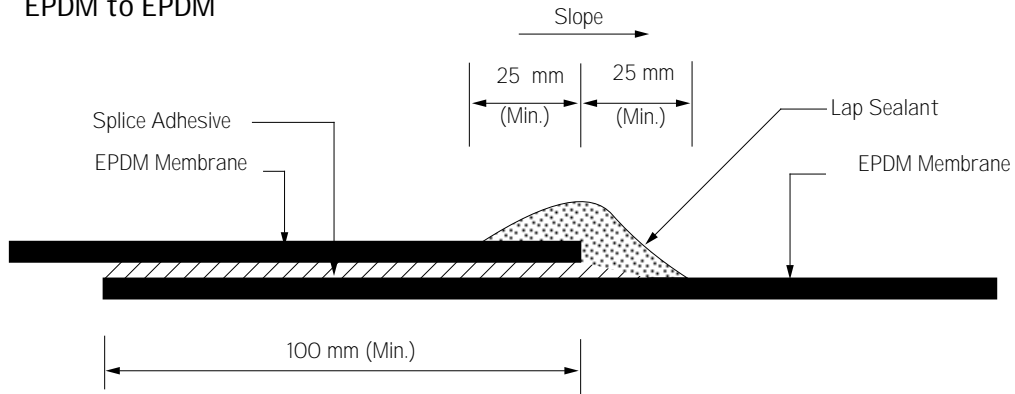


<b>Firestone</b> BUILDING PRODUCTS EUROPE	<b>EPDM - DETAIL</b> Standard Seam Using 75 mm (3") Tape	<b>No. :</b> E - LS - 1	<b>Systems</b> All
		10 / 1995	

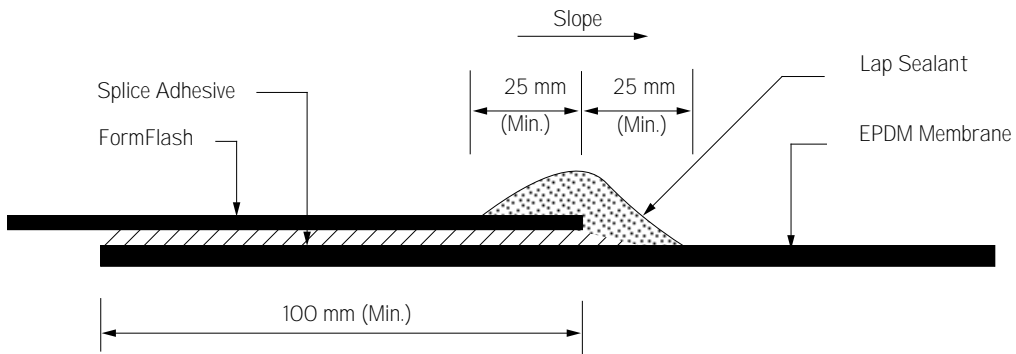


<b>Firestone</b> BUILDING PRODUCTS EUROPE	<b>EPDM - DETAIL</b> Standard Seam Using 75 mm (3") Tape	<b>No. :</b> E - LS - 2	<b>Systems</b> Reinforced
		12 / 1996	

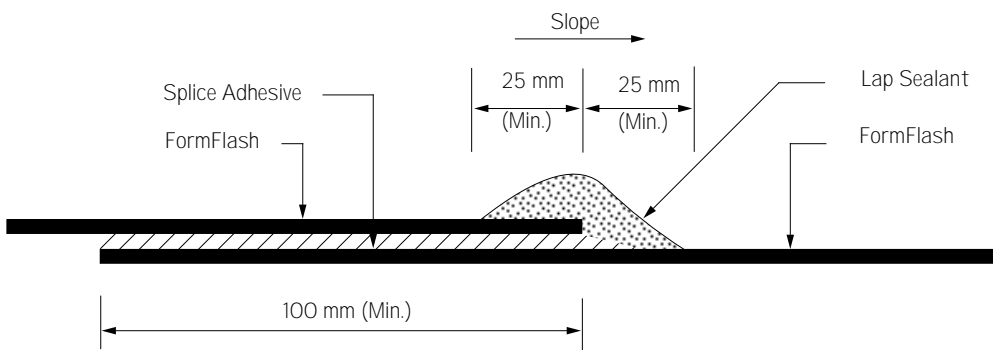
### EPDM to EPDM



### FORMFLASH to EPDM



### FORMFLASH to FORMFLASH

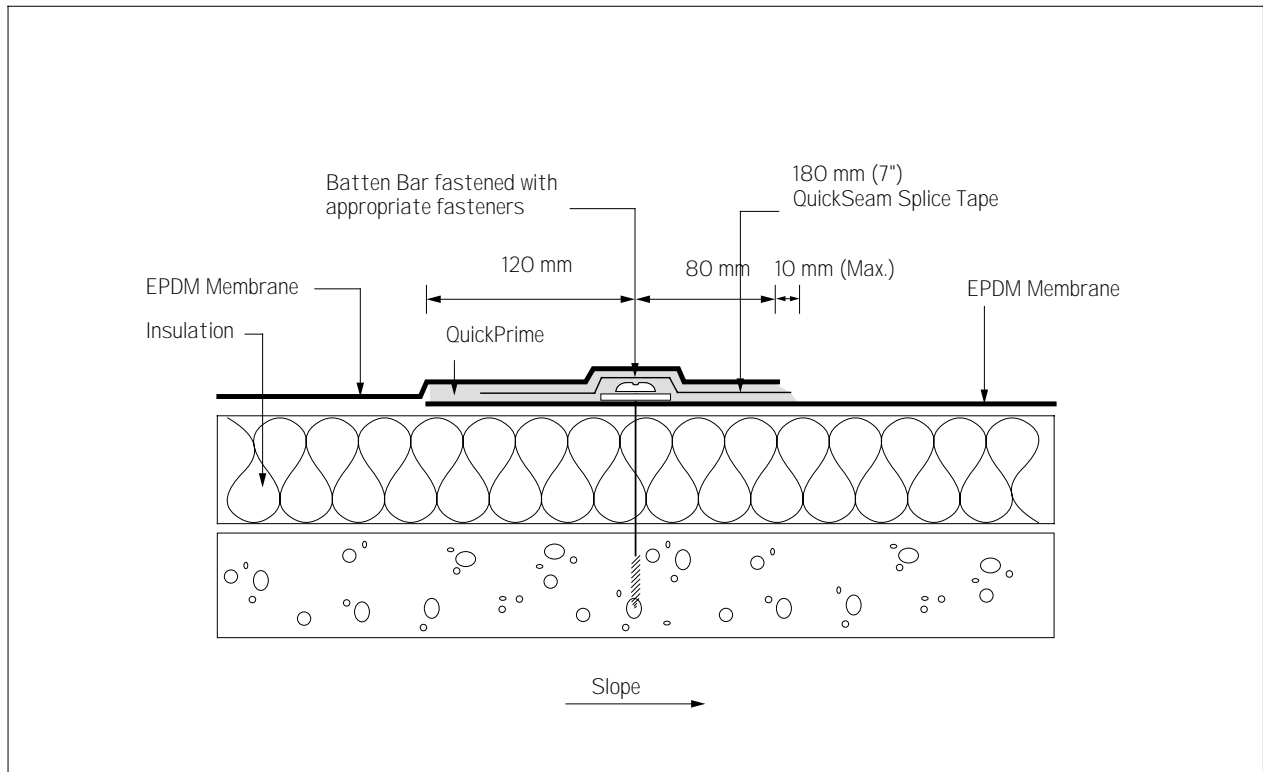


**Firestone**  
BUILDING PRODUCTS EUROPE

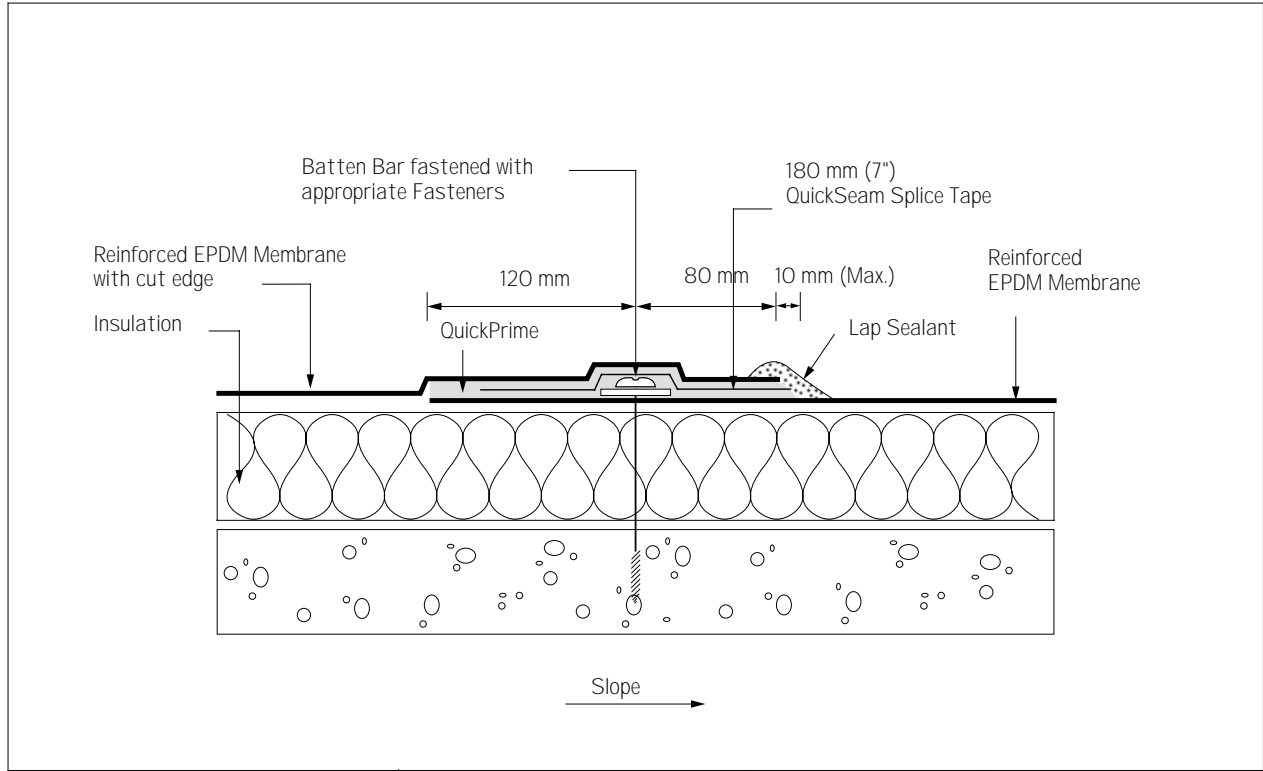
**EPDM - DETAIL**  
Seams Using Splice Adhesive

**No. :** E - LS - 3  
10 / 1995

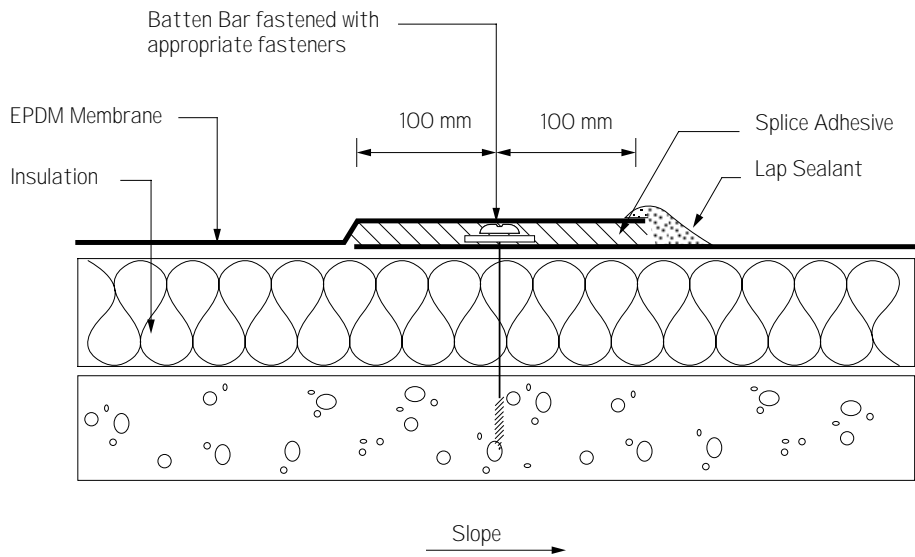
**Systems**  
All



<b>Firestone</b> BUILDING PRODUCTS EUROPE	<b>EPDM - DETAIL</b> Seam with Batten Bar Using 180 mm (7") Tape	<b>No. :</b> E - LS - 4	<b>Systems</b> Batten-In-the-Seam Reinforced
		10 / 1995	



<b>Firestone</b> BUILDING PRODUCTS EUROPE	<b>EPDM - DETAIL</b> Seam with Batten Bar Using 180 mm (7") Tape	<b>No. :</b> E - LS - 5	<b>Systems</b> Reinforced
		12 / 1996	

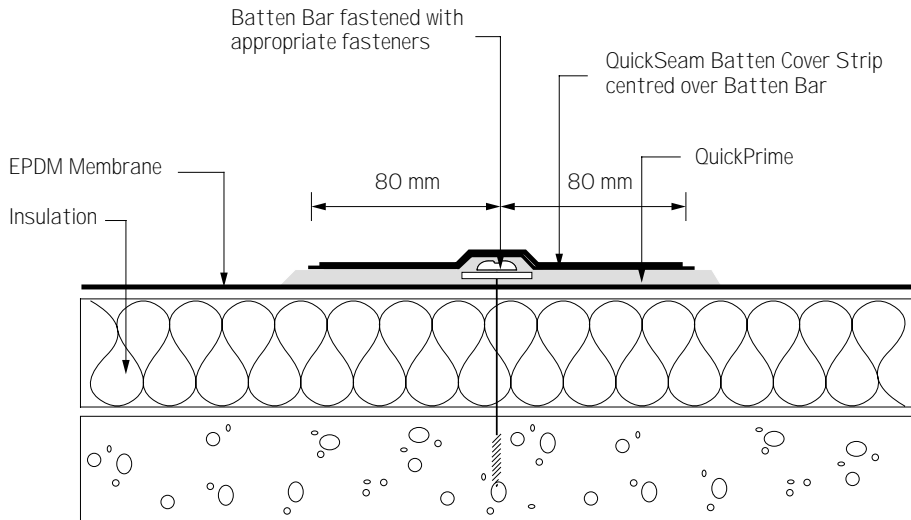


**Firestone**  
BUILDING PRODUCTS EUROPE

**EPDM - DETAIL**  
Seam With Batten Bar  
Using Splice Adhesive

**No. :** E - LS - 6  
10 / 1995

**Systems**  
Batten-In-the-Seam  
Reinforced

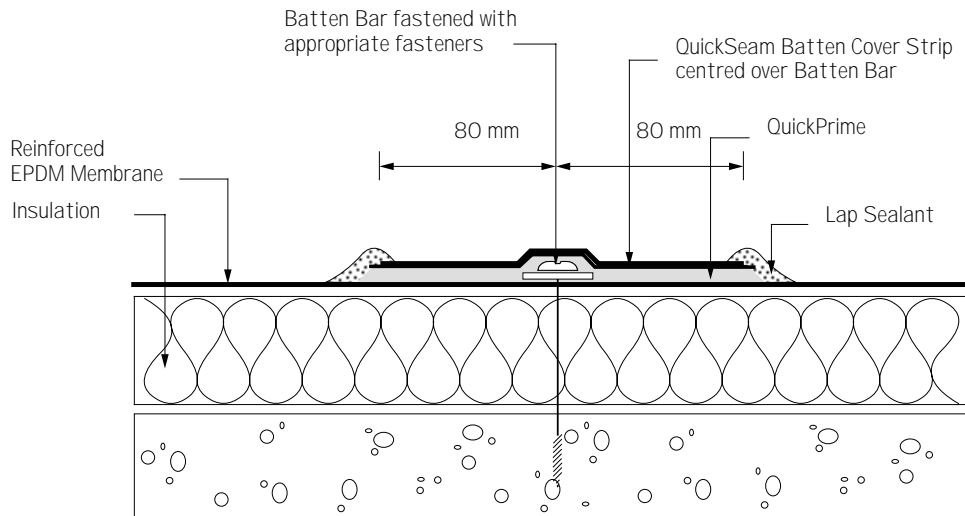


**Firestone**  
BUILDING PRODUCTS EUROPE

**EPDM - DETAIL**  
QuickSeam Batten Cover

**No. :** E - LS - 7  
10 / 1995

**Systems**  
Mechanically Anchored  
Batten-In-the-Seam



**Firestone**  
BUILDING PRODUCTS EUROPE

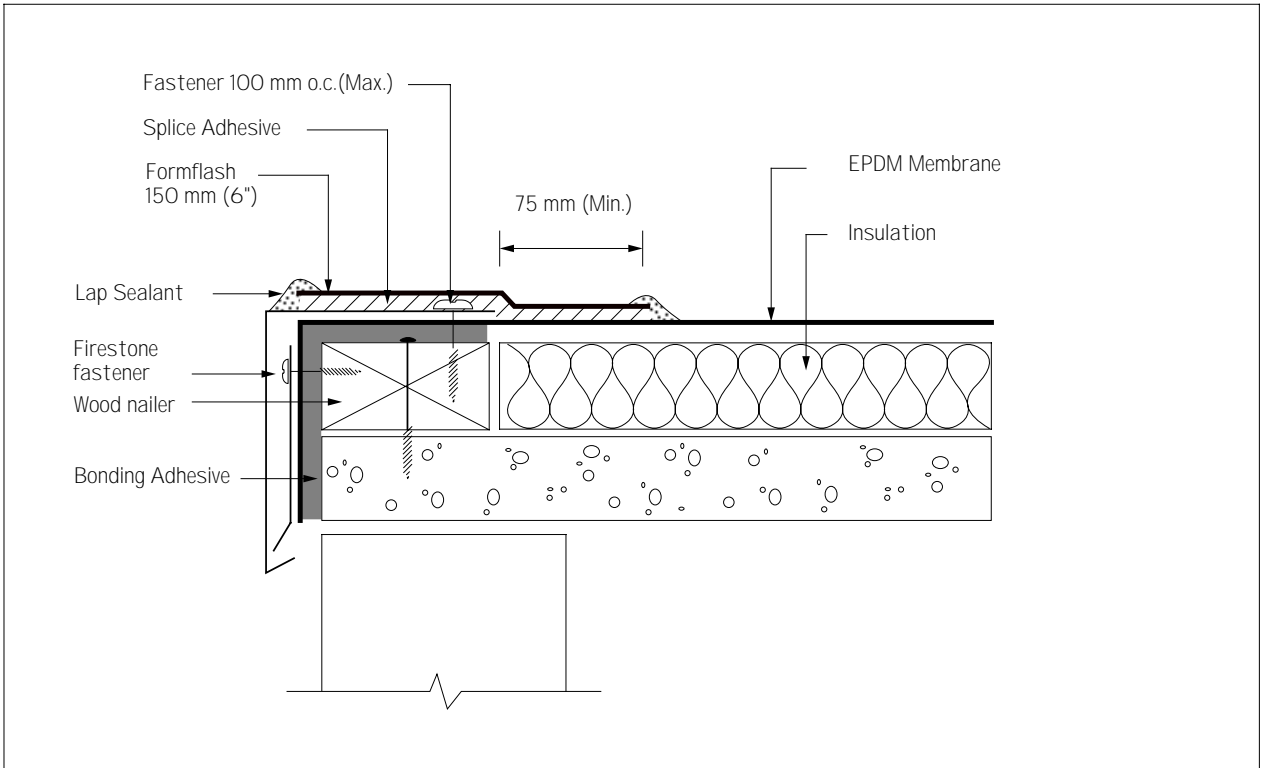
**EPDM - DETAIL**  
QuickSeam Batten Cover

**No. :** E - LS - 8  
10 / 1995

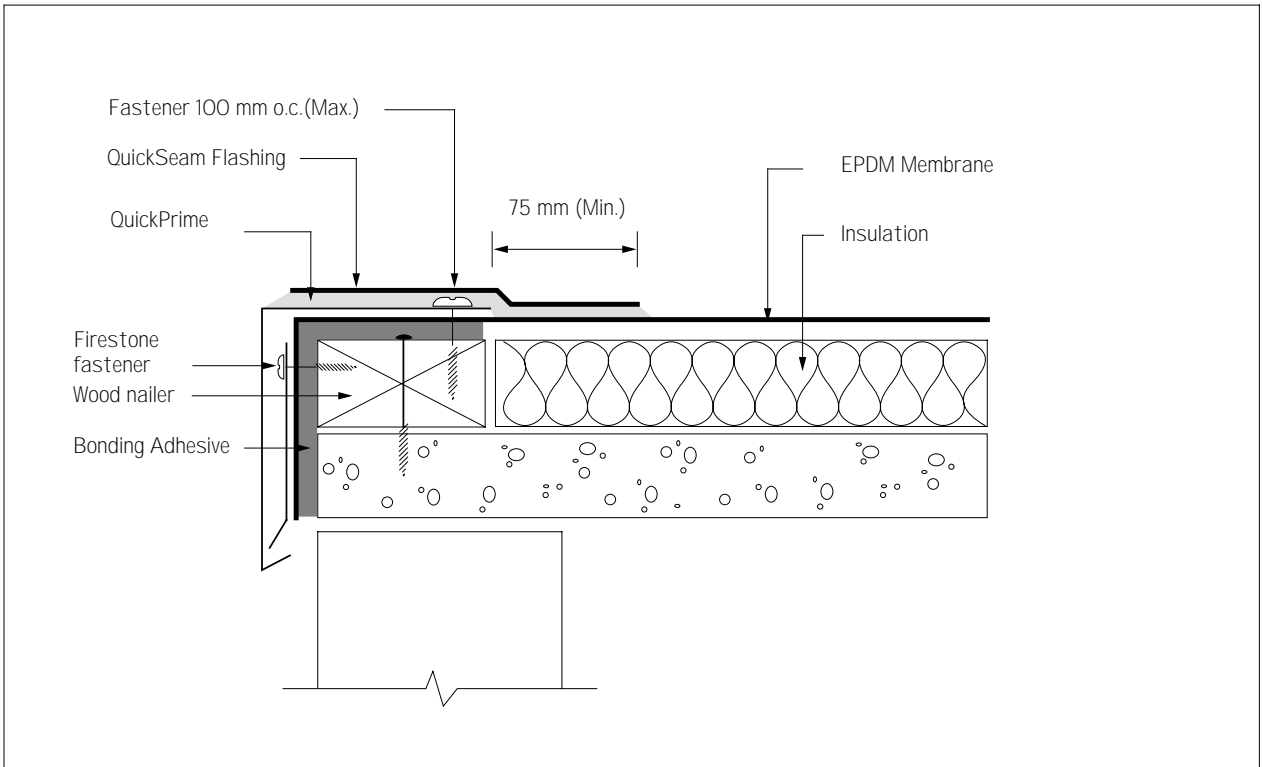
**Systems**  
Reinforced

## 5.2 ROOF EDGES

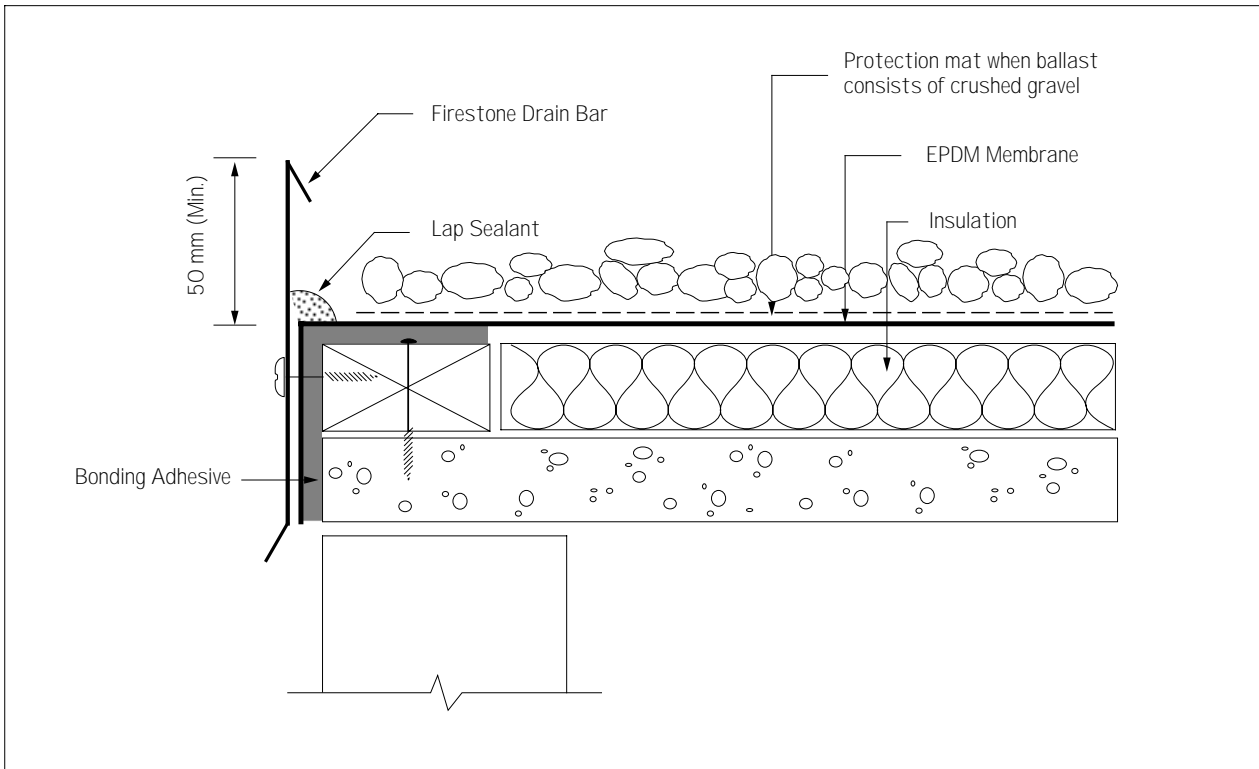
DETAIL No.	EPDM - DETAIL	SYSTEMS
E-RE-1	Standard Roof Edge Using Formflash	Adhered, MAS, BIS, Reinforced
E-RE-2	Standard Roof Edge Using QuickSeam Flashing	Adhered, MAS, BIS, Reinforced
E-RE-3	Drain Bar	Ballast, Inverted
E-RE-4	Metal External Gutter Using Formflash	Ballast, Inverted
E-RE-5	Metal external Gutter Using Formflash	Adhered, MAS, BIS, Reinforced
E-RE-6	Metal External Gutter Using QuickSeam Flashing	Adhered, MAS, BIS, Reinforced
E-RE-7	Concrete External Gutter	Adhered, MAS, BIS, Reinforced
E-RE-8	Concrete External Gutter	Ballast, Inverted
E-RE-9	Internal Gutter	All



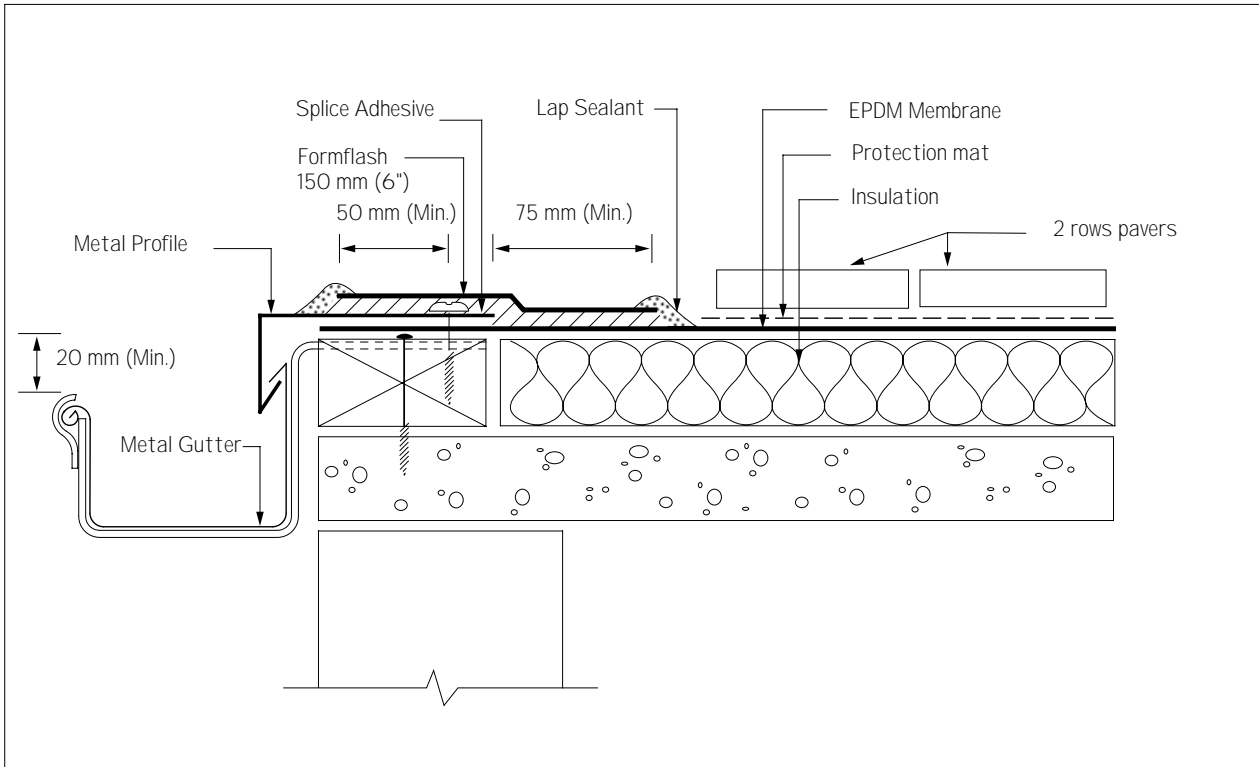
<b>Firestone</b> BUILDING PRODUCTS EUROPE	<b>EPDM - DETAIL</b> Standard Roof Edge Using Formflash	<b>No. :</b> E - RE - 1	<b>Systems</b> Adhered, MAS, BIS, Reinforced
		12 / 1996	



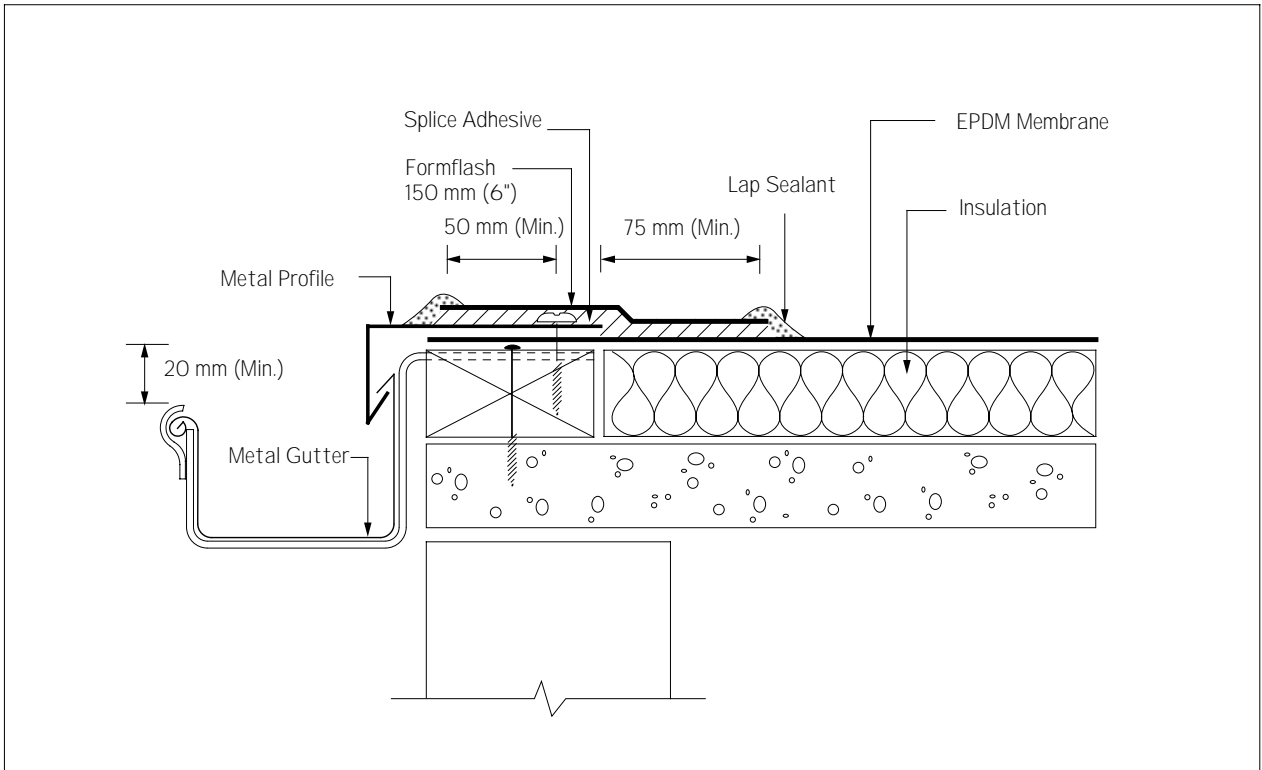
<b>Firestone</b> BUILDING PRODUCTS EUROPE	<b>EPDM - DETAIL</b> Standard Roof Edge Using QuickSeam Flashing	<b>No. :</b> E - RE - 2	<b>Systems</b> Adhered, MAS, BIS, Reinforced
		12 / 1996	



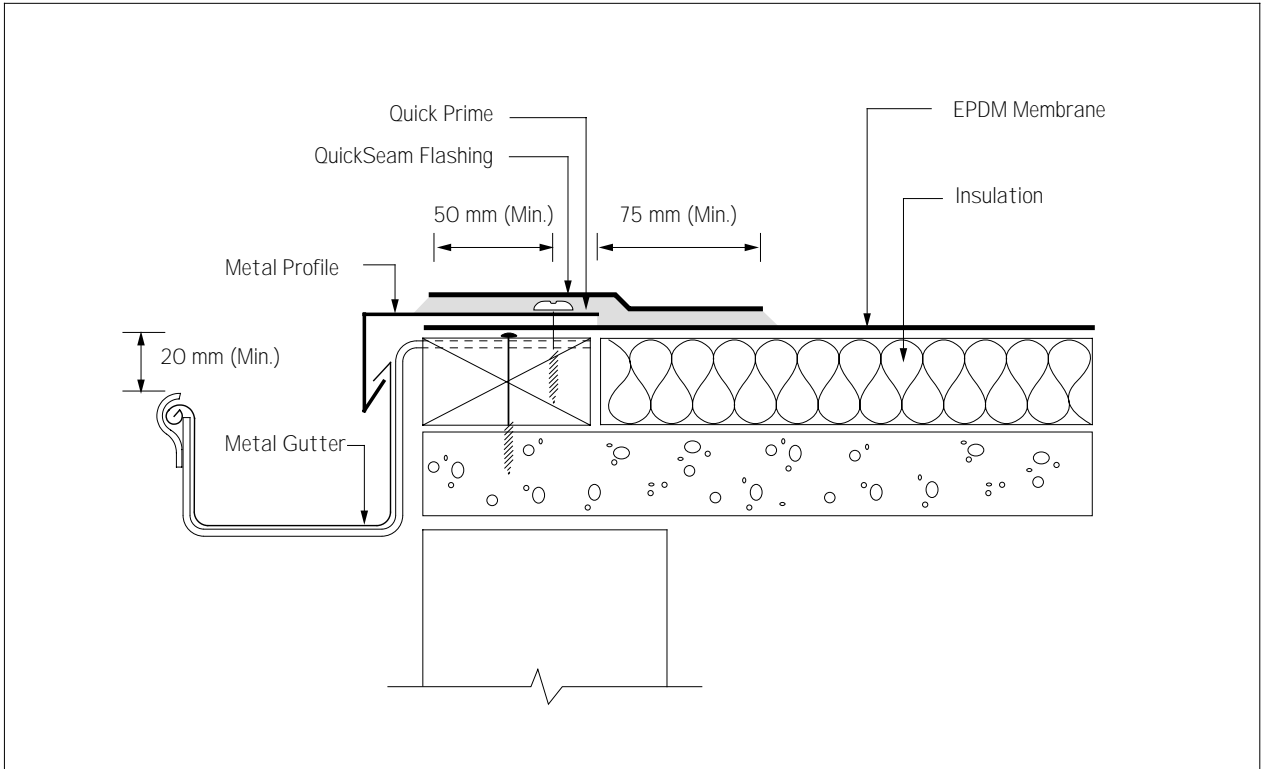
<b>Firestone</b> BUILDING PRODUCTS EUROPE	<b>EPDM - DETAIL</b> Drain Bar	<b>No. :</b> E - RE - 3	<b>Systems</b> Ballasted, Inverted
		10 / 1995	



<b>Firestone</b> BUILDING PRODUCTS EUROPE	<b>EPDM - DETAIL</b> Metal External Gutter Using Formflash	<b>No. :</b> E - RE - 4	<b>Systems</b> Ballasted, Inverted
		10 / 1995	

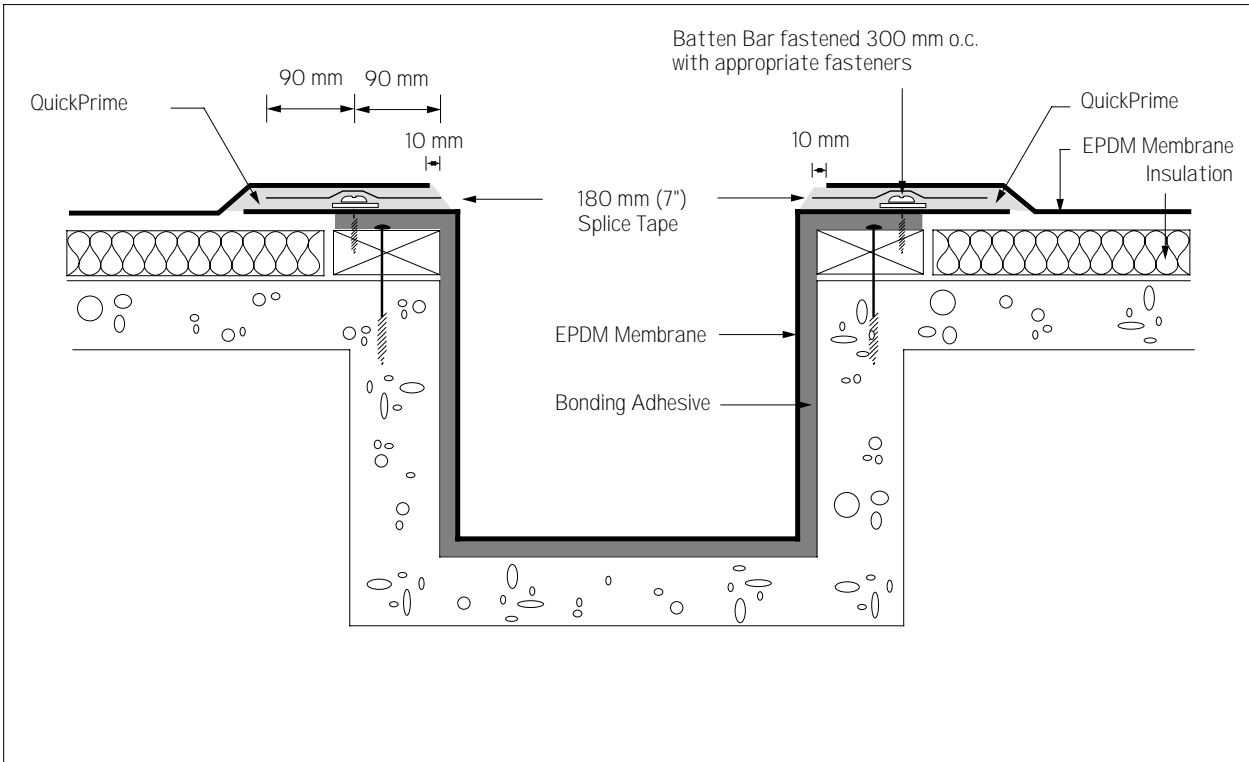


<b>Firestone</b> BUILDING PRODUCTS EUROPE	<b>EPDM - DETAIL</b> Metal External Gutter Using Formflash	<b>No. :</b> E - RE - 5	<b>Systems</b> Adhered, MAS, BIS, Reinforced
		12 / 1996	



<b>Firestone</b> BUILDING PRODUCTS EUROPE	<b>EPDM - DETAIL</b> Metal External Gutter Using QuickSeam Flashing	<b>No. :</b> E - RE - 6	<b>Systems</b> Adhered, MAS, BIS, Reinforced
		12 / 1996	



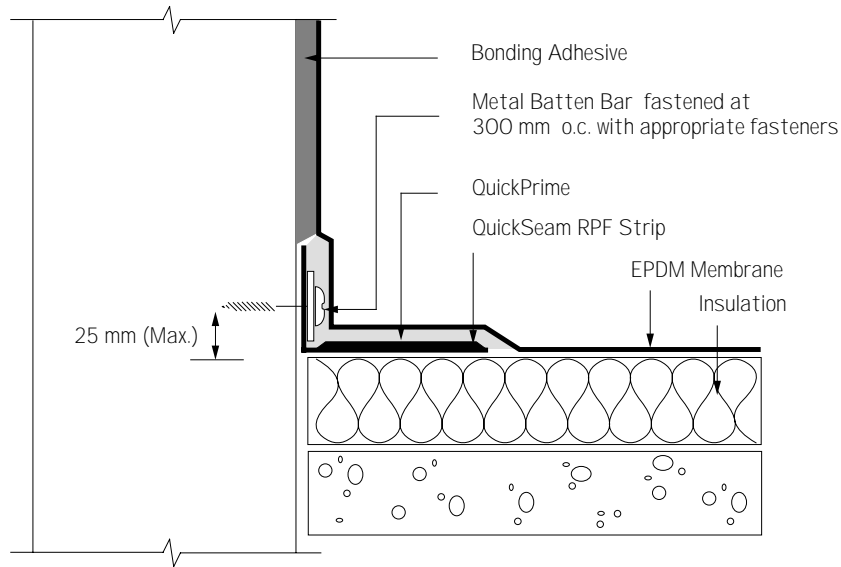


<b>Firestone</b> BUILDING PRODUCTS EUROPE	<b>EPDM - DETAIL</b> Internal Gutter	<b>No. :</b> E - RE - 9	<b>Systems</b> All
		10 / 1995	



### 5.3 BASE TIE - INS

DETAIL No.	EPDM - DETAIL	SYSTEMS
E-BT-1	Vertical Base Tie-in Using QSRPF Strip	All
E-BT-2	Horizontal Base Tie-In Using QSRPF Strip	All
E-BT-3	Plan View of QSRPF Strip	All
E-BT-4	Alternative Vertical Base Tie-In	All
E-BT-5	Alternative Horizontal Base Tie-In	All
E-BT-6	Base Tie-In at Structural Steel Support	All
E-BT-7	Base Tie-In Under Shingles / Roofing Tiles	All
E-BT-8	Tie-In To Existing Bituminous Roof	All
E-BT-9	Tie-In To Existing EPDM Roof	All
E-BT-10	Tie-In To New Curb / HVAC Unit	All
E-BT-11	Tie-In to Existing Curb / HVAC Unit	All
E-BT-12	Tie-In to New Skylight-Curb	All

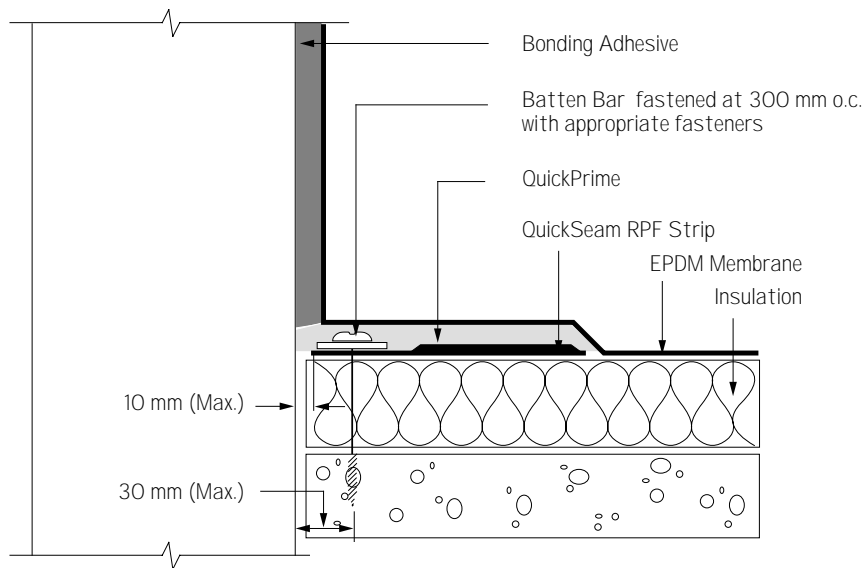


**Firestone**  
BUILDING PRODUCTS EUROPE

**EPDM - DETAIL**  
Vertical Base Tie-in  
Using QuickSeam RPF Strip

**No. :** E - BT - 1  
12 / 1996

**Systems**  
All



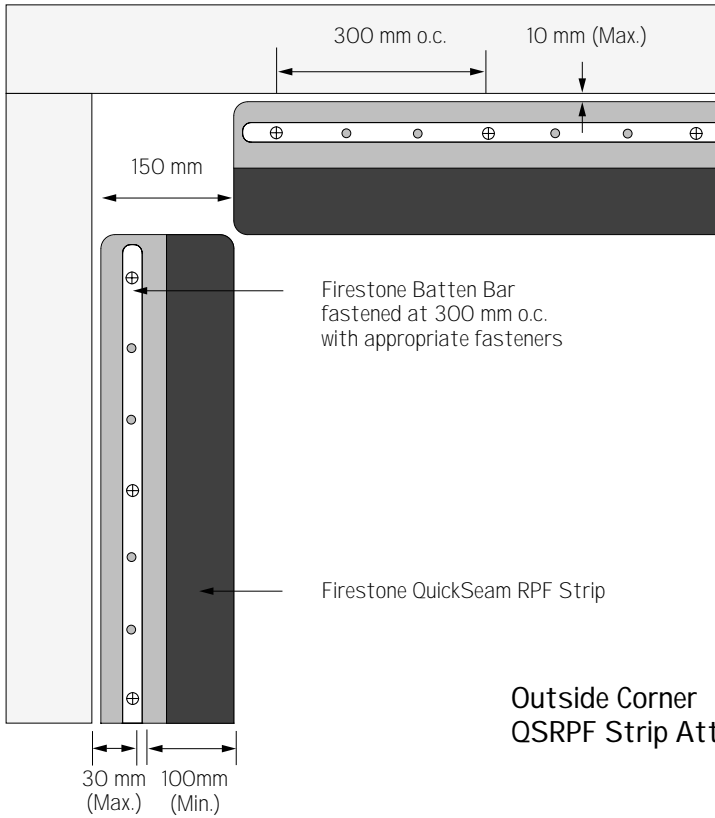
**Firestone**  
BUILDING PRODUCTS EUROPE

**EPDM - DETAIL**  
Horizontal Base Tie-in  
Using QuickSeam RPF Strip

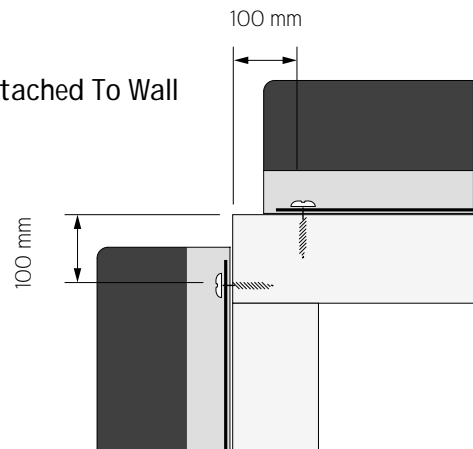
**No. :** E - BT - 2  
12 / 1996

**Systems**  
All

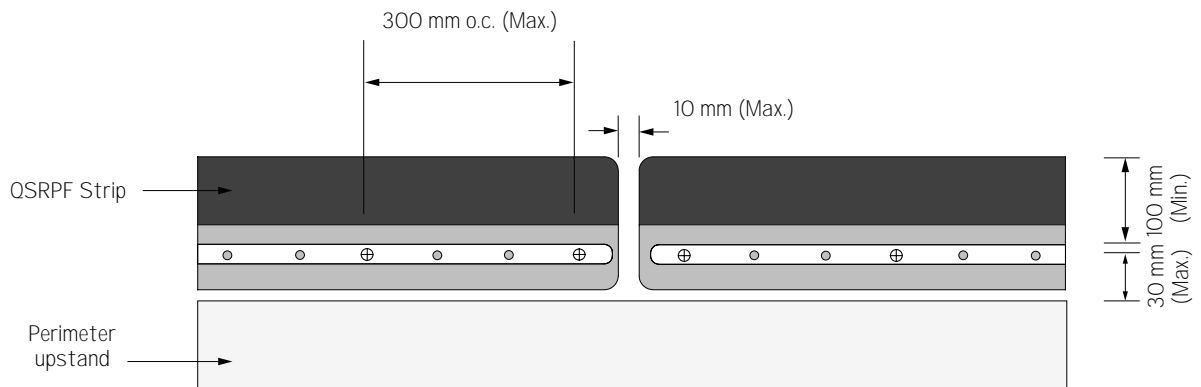
### Inside Corner



### Outside Corner QSRPF Strip Attached To Wall



### Adjoining QuickSeam RPF Strips

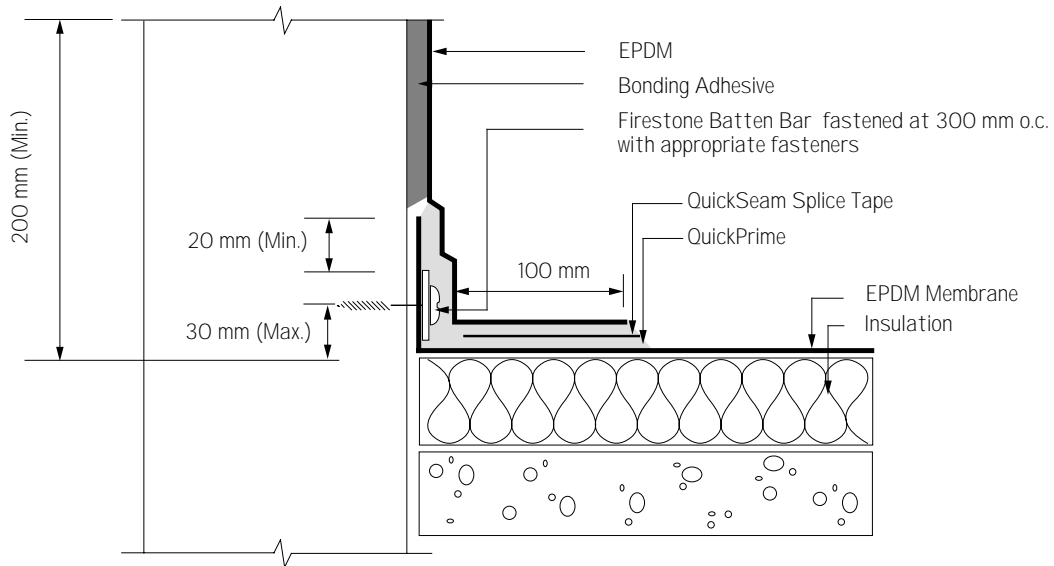


**Firestone**  
BUILDING PRODUCTS EUROPE

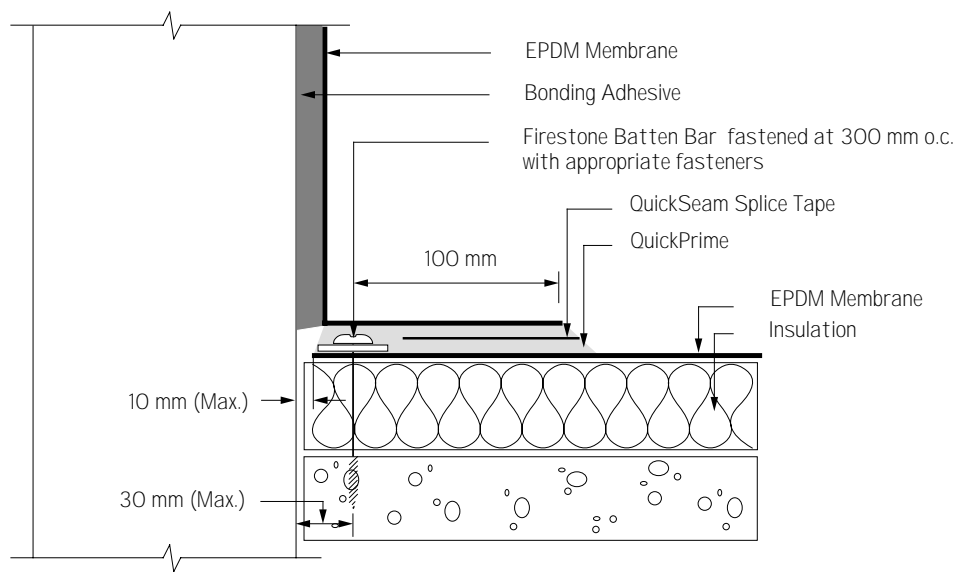
**EPDM - DETAIL**  
Plan View Of  
QuickSeam RPF Strip

**No. :** E - BT - 3  
12 / 1996

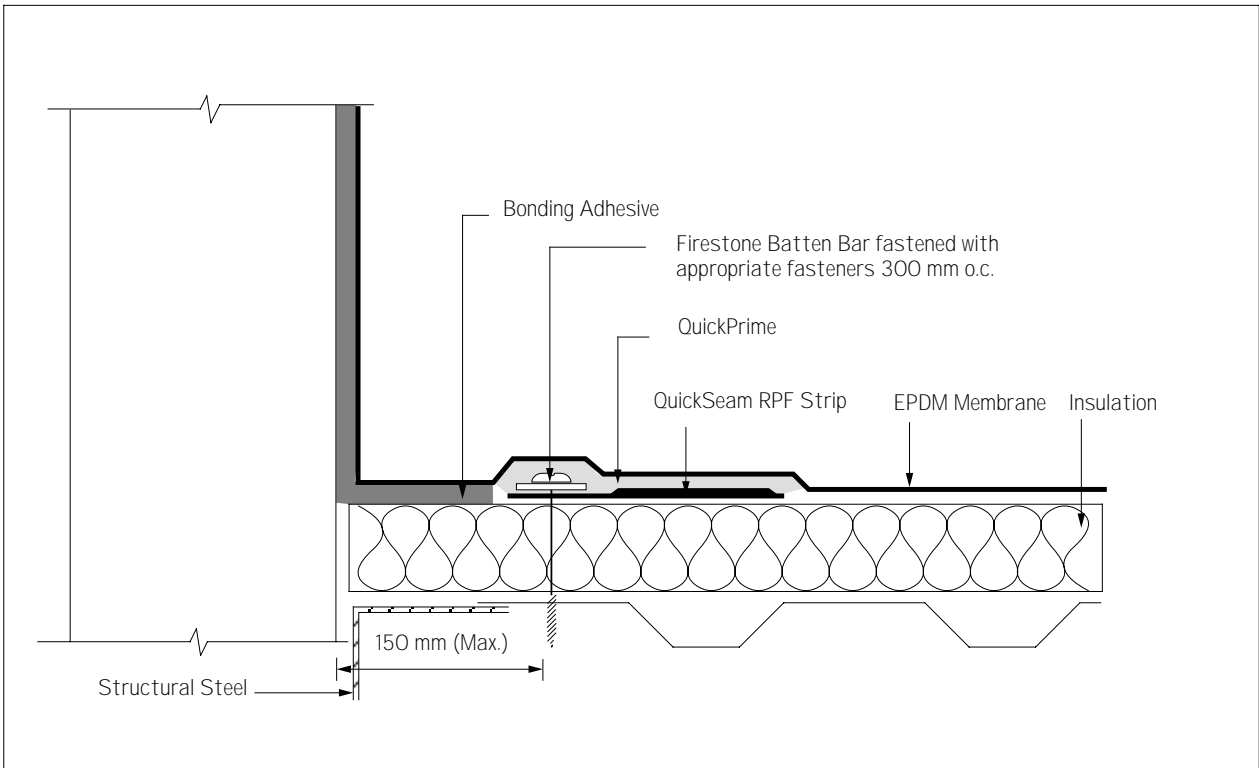
**Systems**  
All



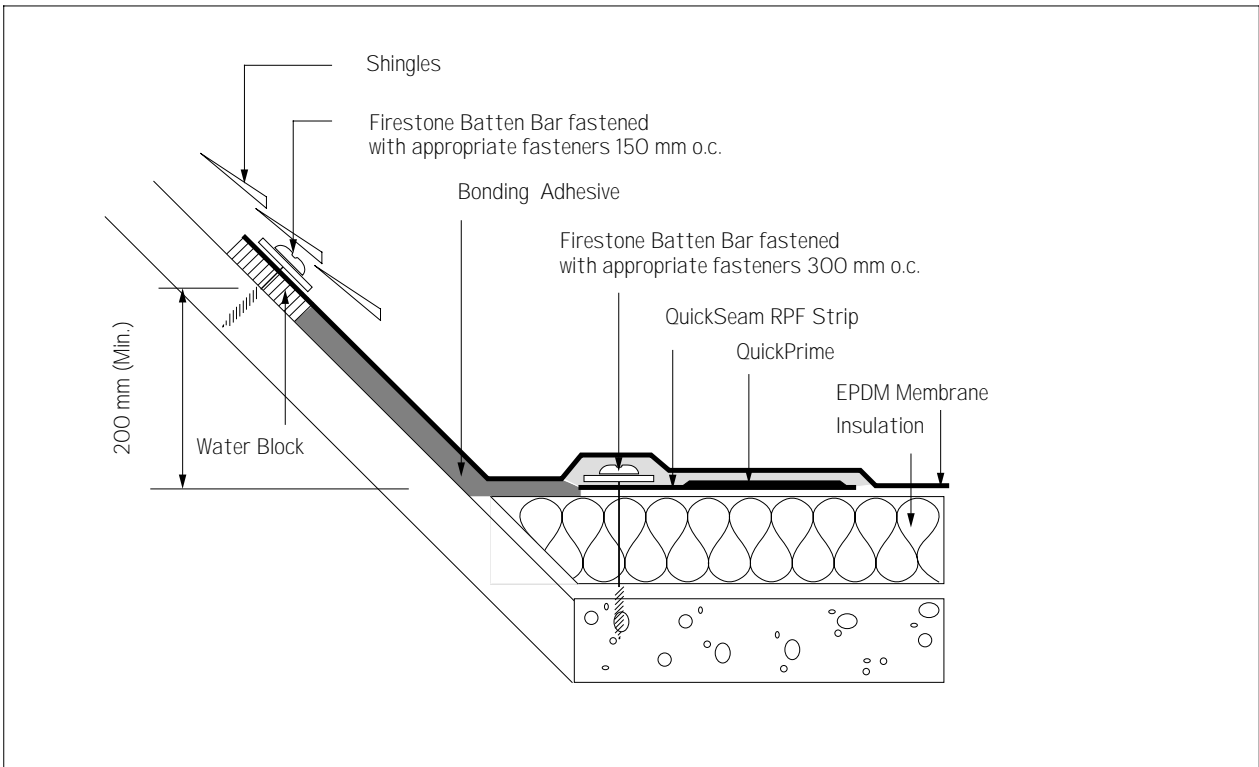
<b>Firestone</b> BUILDING PRODUCTS EUROPE	<b>EPDM - DETAIL</b> Alternative Vertical Base Tie-in	<b>No. :</b> E - BT - 4	<b>Systems</b> All
		12 / 1996	



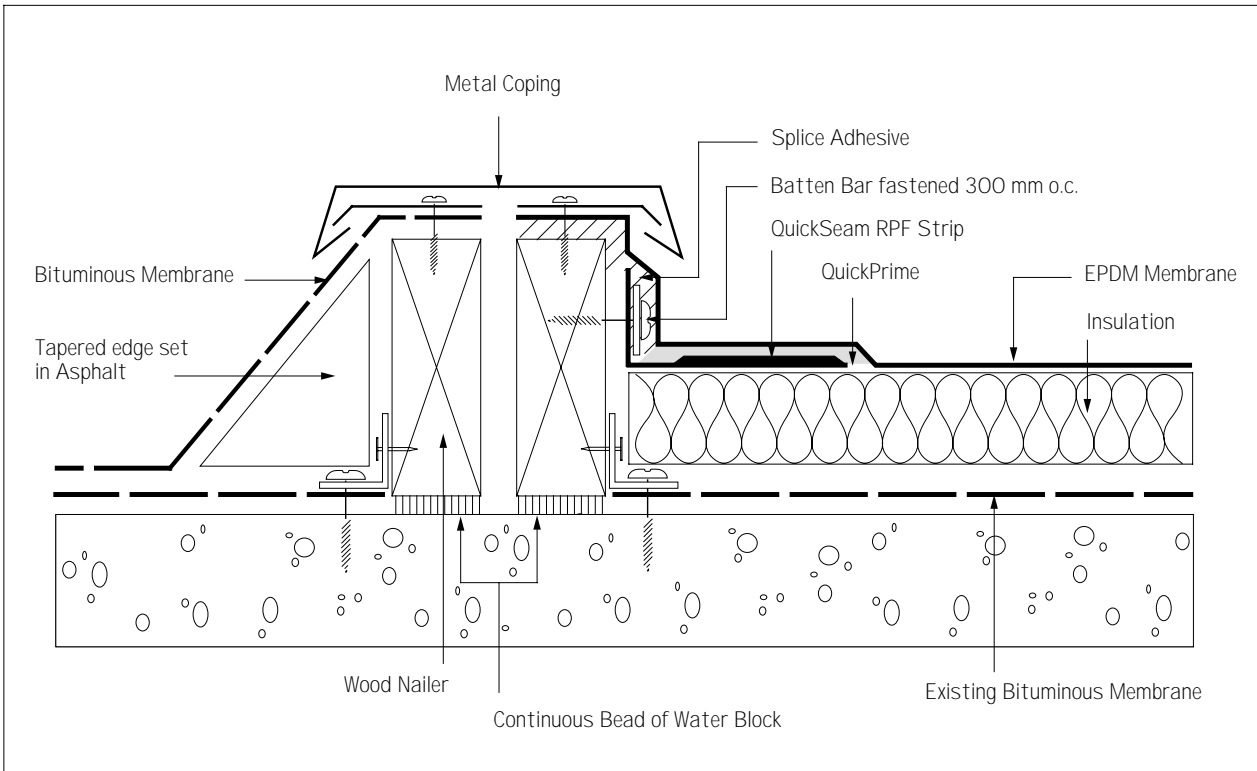
<b>Firestone</b> BUILDING PRODUCTS EUROPE	<b>EPDM - DETAIL</b> Alternative Horizontal Base Tie-in	<b>No. :</b> E - BT - 5	<b>Systems</b> All
		12 / 1996	



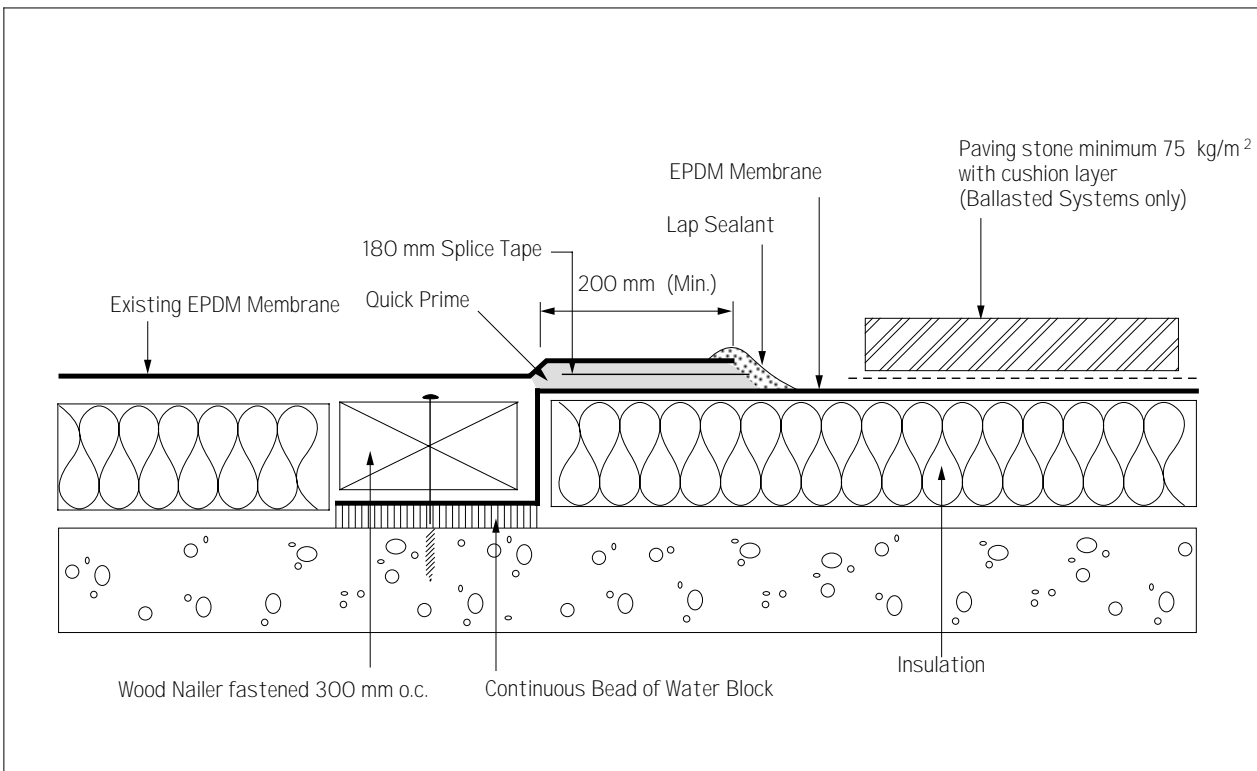
	<b>EPDM - DETAIL</b> Base Tie-in At Structural Steel Support	<b>No.</b> E - BT - 6	<b>Systems</b> All
		12 / 1996	



	<b>EPDM - DETAIL</b> Base Tie-in Under Shingles / Roofing Tiles	<b>No.</b> E - BT - 7	<b>Systems</b> All
		12 / 1996	

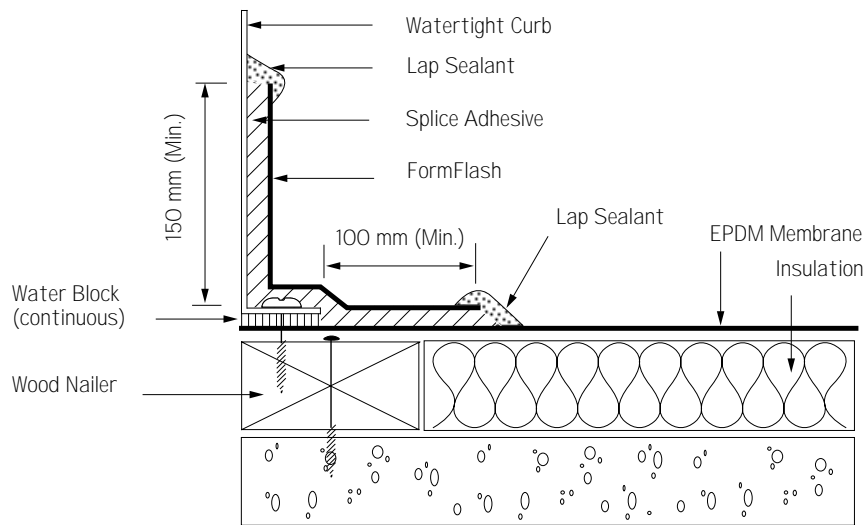


<b>Firestone</b> BUILDING PRODUCTS EUROPE	<b>EPDM - DETAIL</b> Tie-in to Existing Bituminous Roof	<b>No. :</b> E - BT - 8	<b>Systems</b> All
		12 / 1996	



<b>Firestone</b> BUILDING PRODUCTS EUROPE	<b>EPDM - DETAIL</b> Tie-in to Existing EPDM Roof	<b>No. :</b> E - BT - 9	<b>Systems</b> All
		10 / 1995	



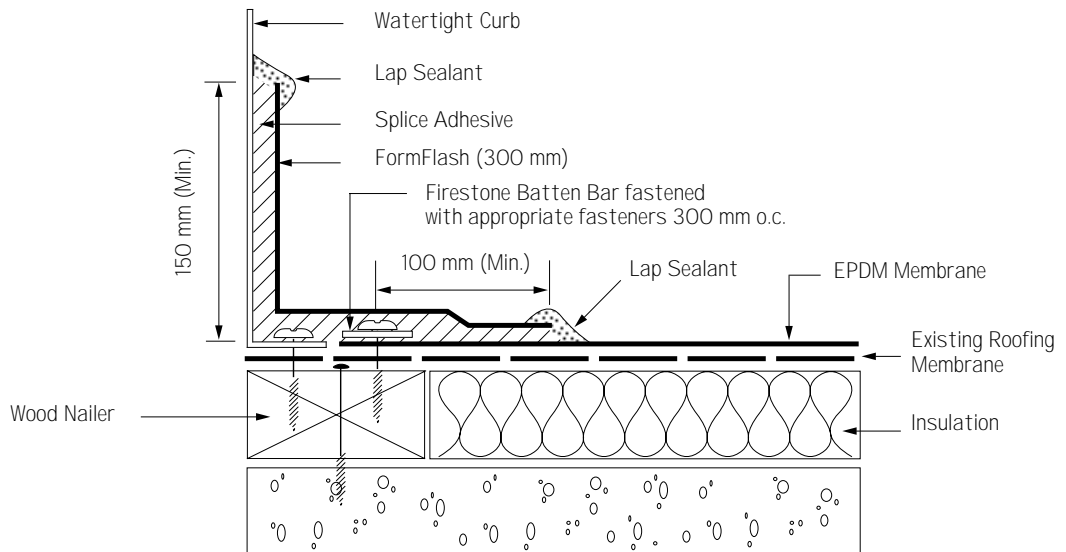


**Firestone**  
BUILDING PRODUCTS EUROPE

**EPDM - DETAIL**  
Tie-in to New Watertight  
Curb Flashing/HVAC Unit

**No. :** E - BT - 10  
10 / 1995

**Systems**  
All

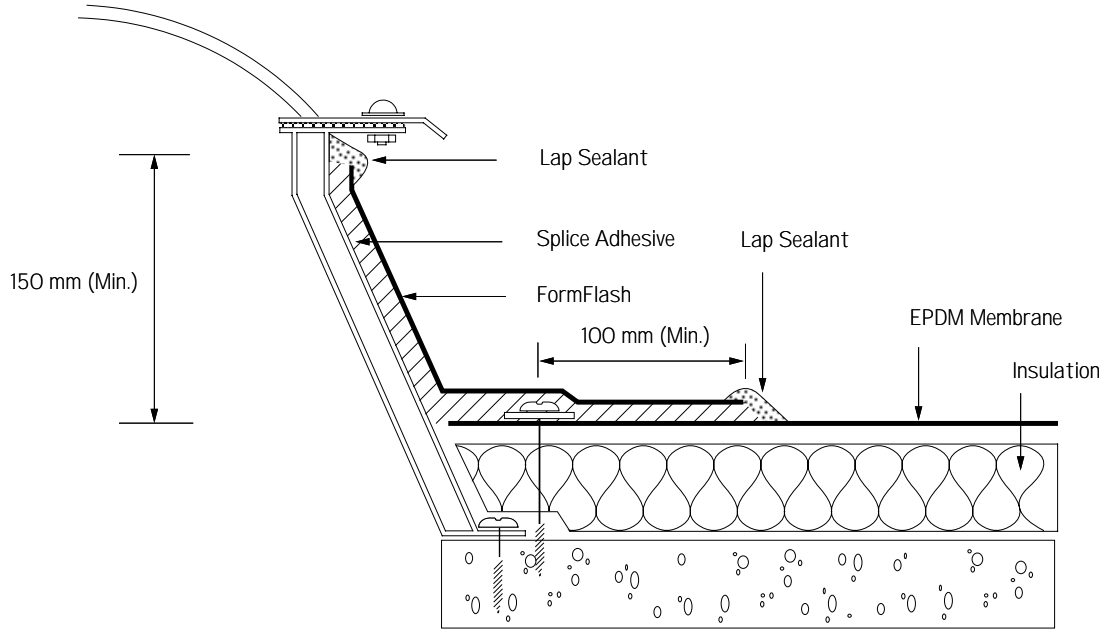


**Firestone**  
BUILDING PRODUCTS EUROPE

**EPDM - DETAIL**  
Tie-in to Existing Watertight  
Curb/HVAC Unit

**No. :** E - BT - 11  
10 / 1995

**Systems**  
All



**Firestone**  
BUILDING PRODUCTS EUROPE

**EPDM - DETAIL**

Tie-in To New  
Skylight-Curb

**No. :** E - BT - 12

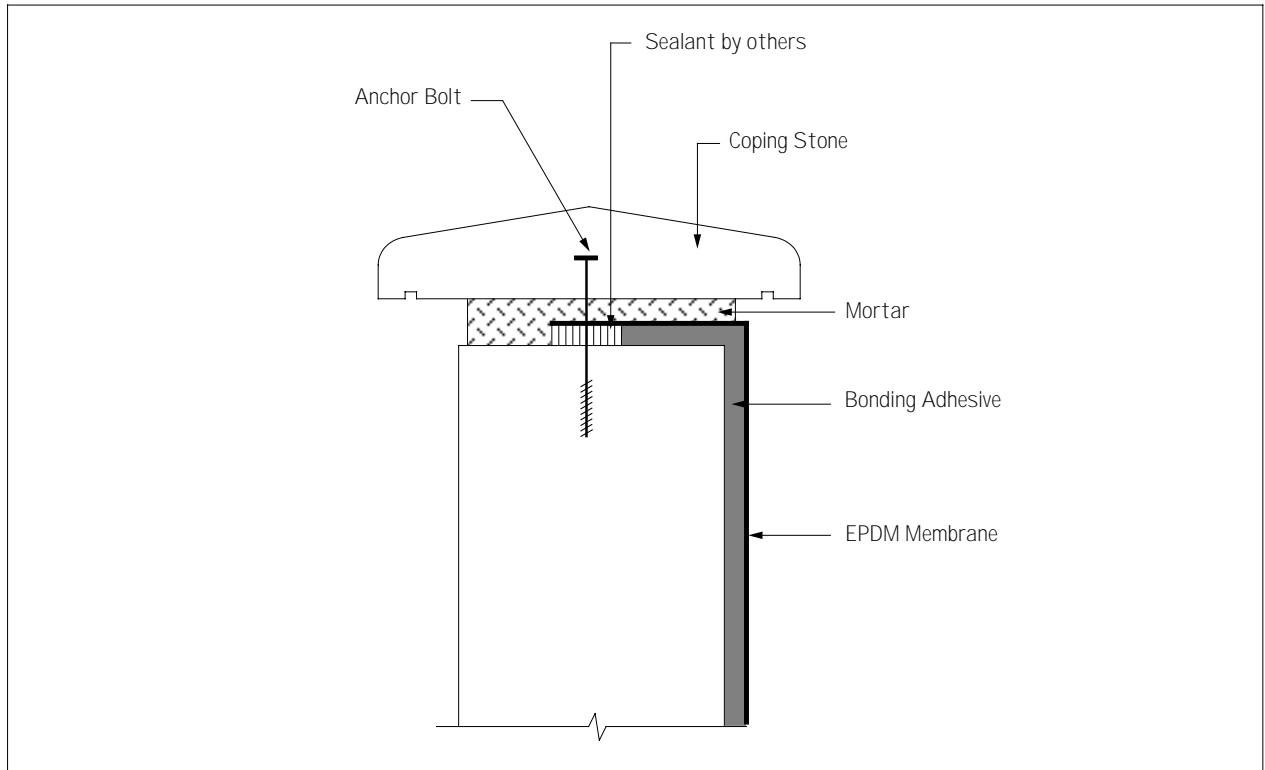
10 / 1995

**Systems**

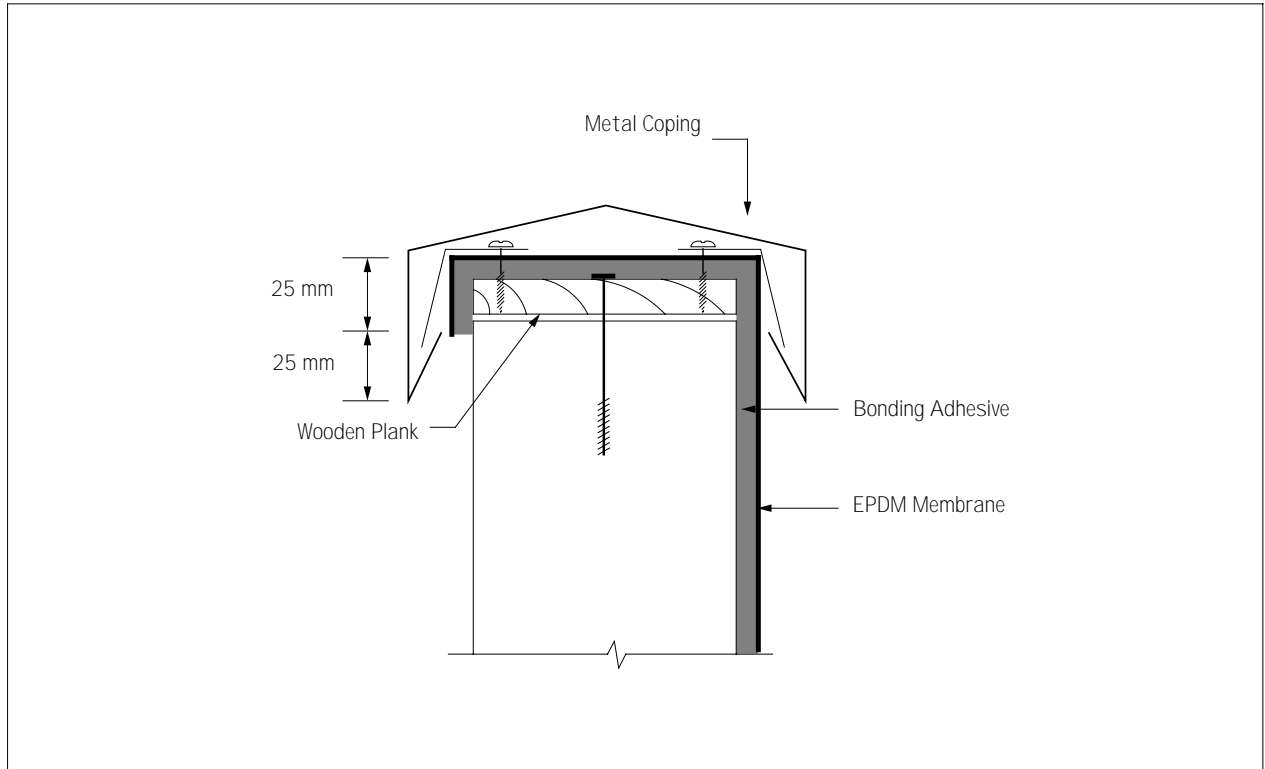
All

## 5.4 TERMINATIONS

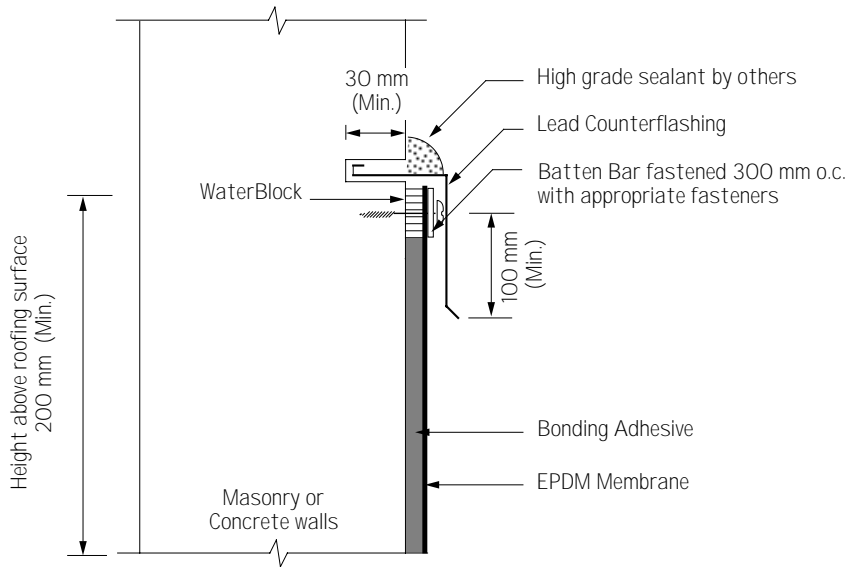
DETAIL No.	EPDM - DETAIL	SYSTEMS
E-T-1	Coping Stone Flashing Termination	All
E-T-2	Metal Coping Flashing Termination	All
E-T-3	Counterflashing Termination	All
E-T-4	Termination Bar Flashing Termination	All
E-T-5	Termination Bar Counterflashing	All
E-T-6	Termination Bar at Joint In Precast Concrete Panel	All
E-T-7	Termination Bar At Wall Expansion Joint	All
E-T-8	Metal Edge Profile Flashing Termination	All
E-T-9	Monotrim Profile Flashing Termination	All
E-T-10	Intermediate Attachment At Wall Flashing	All



<b>Firestone</b> BUILDING PRODUCTS EUROPE	<b>EPDM - DETAIL</b> Coping Stone Flashing Termination	<b>No. :</b> E - T - 1	<b>Systems</b> All
		10 / 1995	



<b>Firestone</b> BUILDING PRODUCTS EUROPE	<b>EPDM - DETAIL</b> Metal Coping Flashing Termination	<b>No. :</b> E - T - 2	<b>Systems</b> All
		10 / 1995	

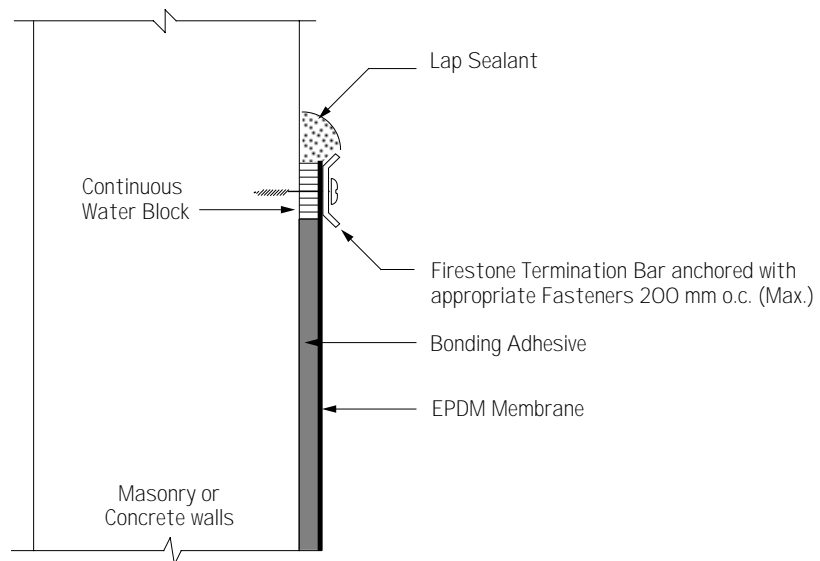


**Firestone**  
BUILDING PRODUCTS EUROPE

**EPDM - DETAIL**  
Counterflashing  
Termination

**No. :** E - T - 3  
10 / 1995

**Systems**  
All

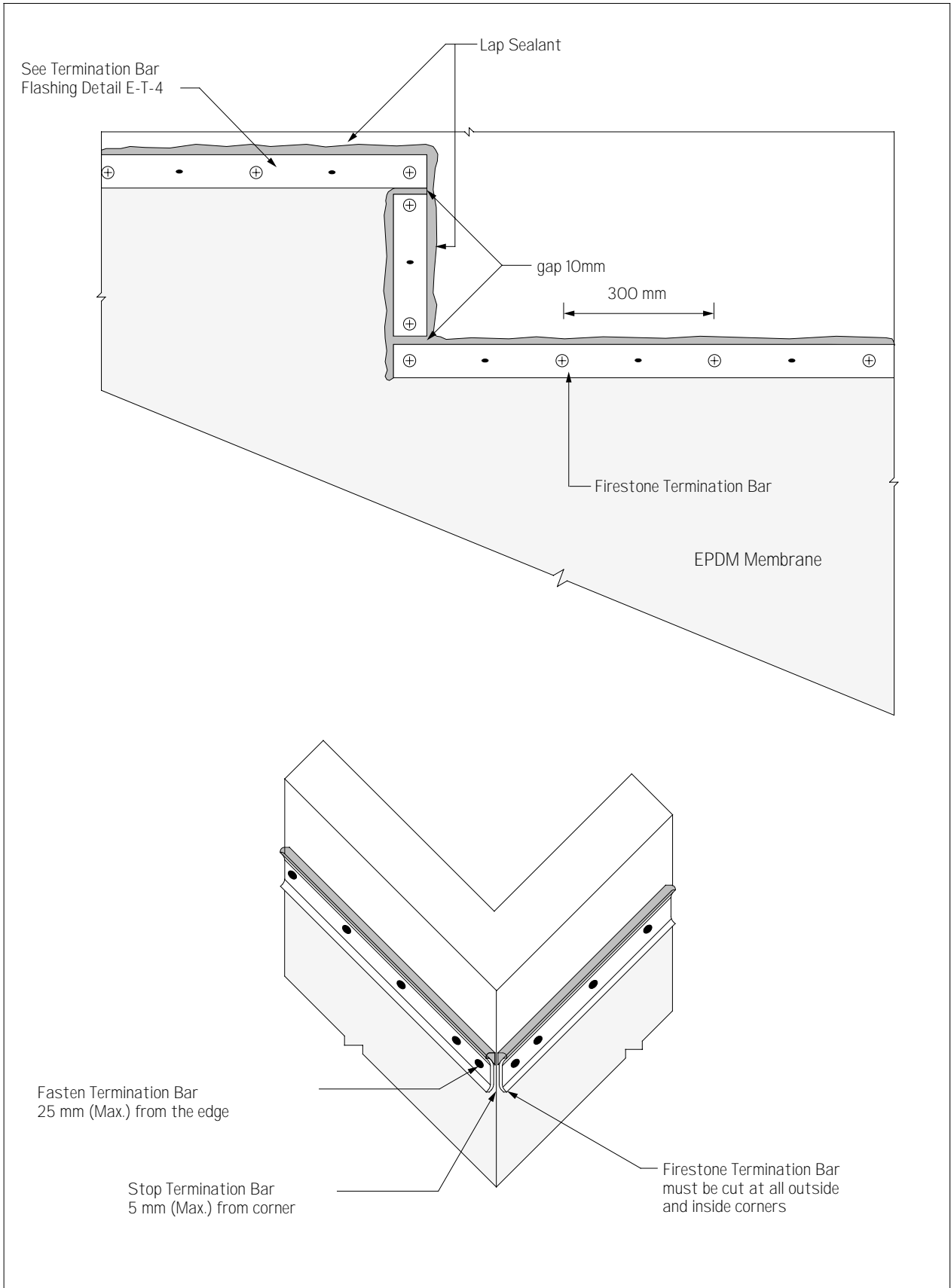


**Firestone**  
BUILDING PRODUCTS EUROPE

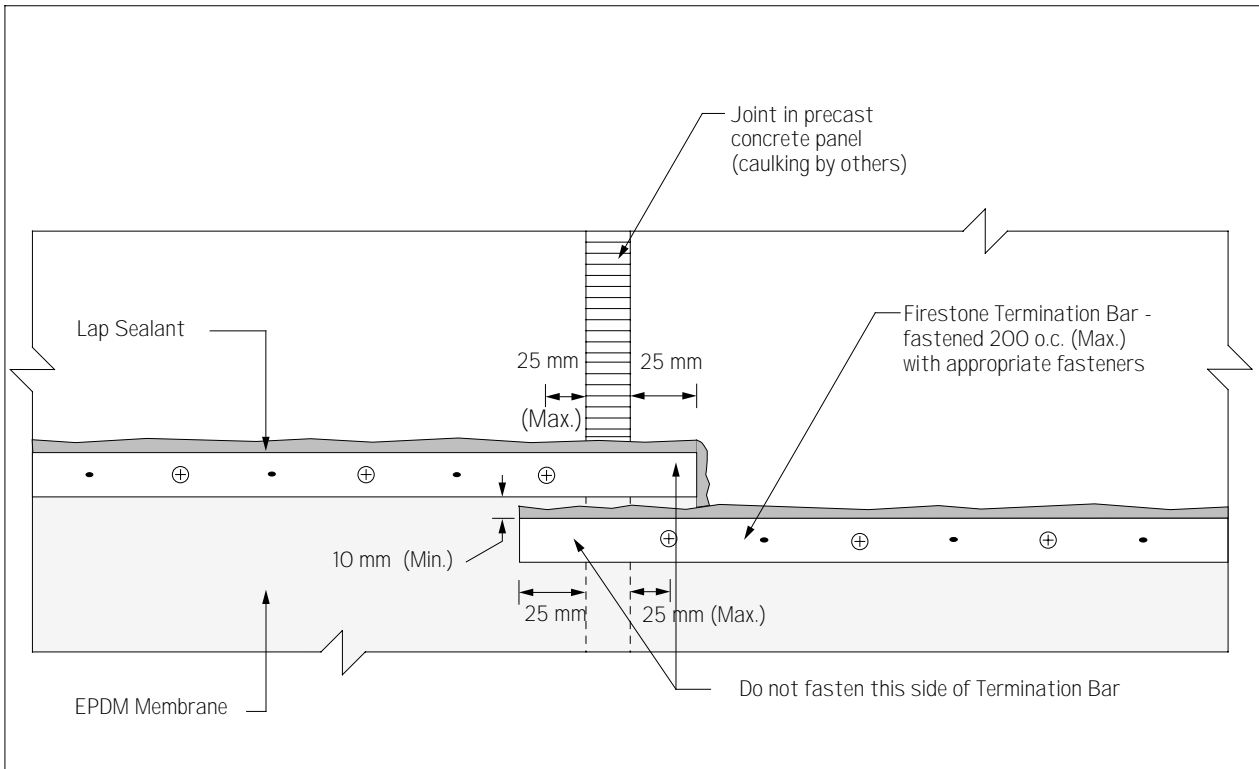
**EPDM - DETAIL**  
Termination Bar  
Flashing Termination

**No. :** E - T - 4  
10 / 1995

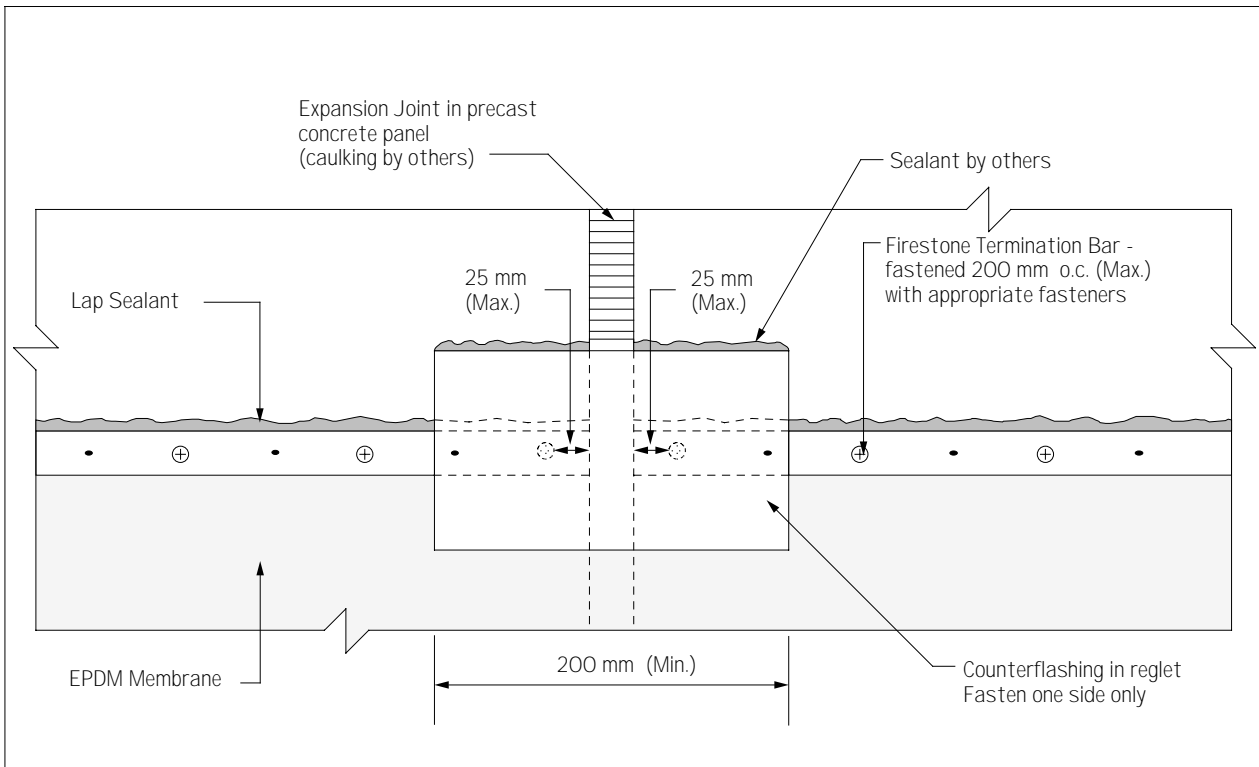
**Systems**  
All



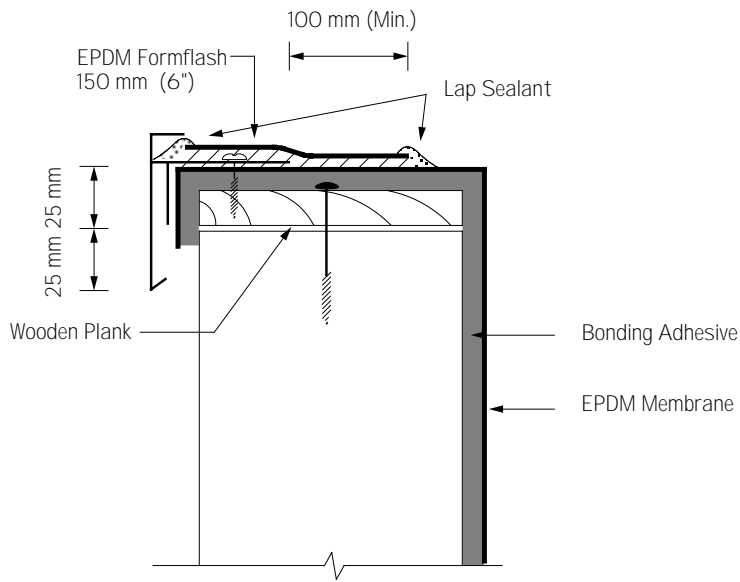
<b>Firestone</b> BUILDING PRODUCTS EUROPE	<b>EPDM - DETAIL</b> Termination Bar Counterflashing	No. : E - T - 5	<b>Systems</b> All
		10 / 1995	



 <b>BUILDING PRODUCTS EUROPE</b>	<b>EPDM - DETAIL</b> Termination Bar At Joint In Precast Concrete Panel	<b>No. :</b> E - T - 6	<b>Systems</b> All
		10 / 1995	



 <b>BUILDING PRODUCTS EUROPE</b>	<b>EPDM - DETAIL</b> Termination Bar At Wall Expansion Joint	<b>No. :</b> E - T - 7	<b>Systems</b> All
		10 / 1995	

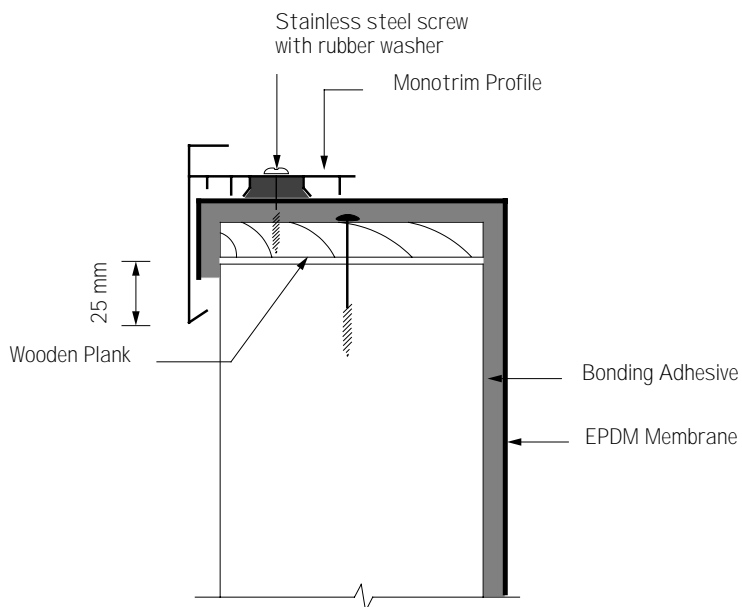


**Firestone**  
BUILDING PRODUCTS EUROPE

**EPDM - DETAIL**  
Metal Edge Profile  
Flashing Termination

**No. :** E - T - 8  
10 / 1995

**Systems**  
All

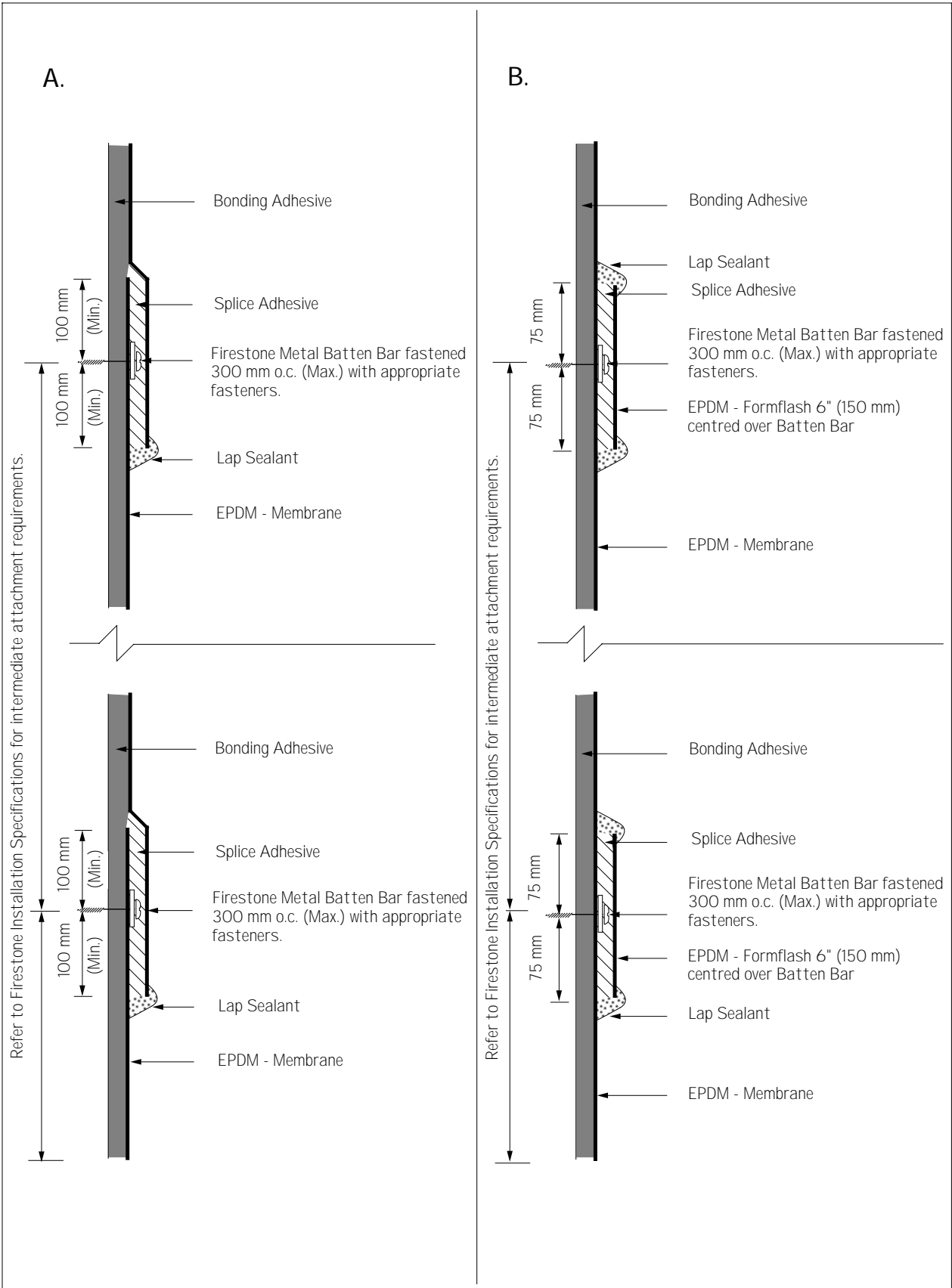


**Firestone**  
BUILDING PRODUCTS EUROPE

**EPDM - DETAIL**  
Monotrim Profile  
Flashing Termination

**No. :** E - T - 9  
10 / 1995

**Systems**  
All



**Firestone**  
BUILDING PRODUCTS EUROPE

**EPDM - DETAIL**  
Intermediate Attachment  
At Wall Flashing

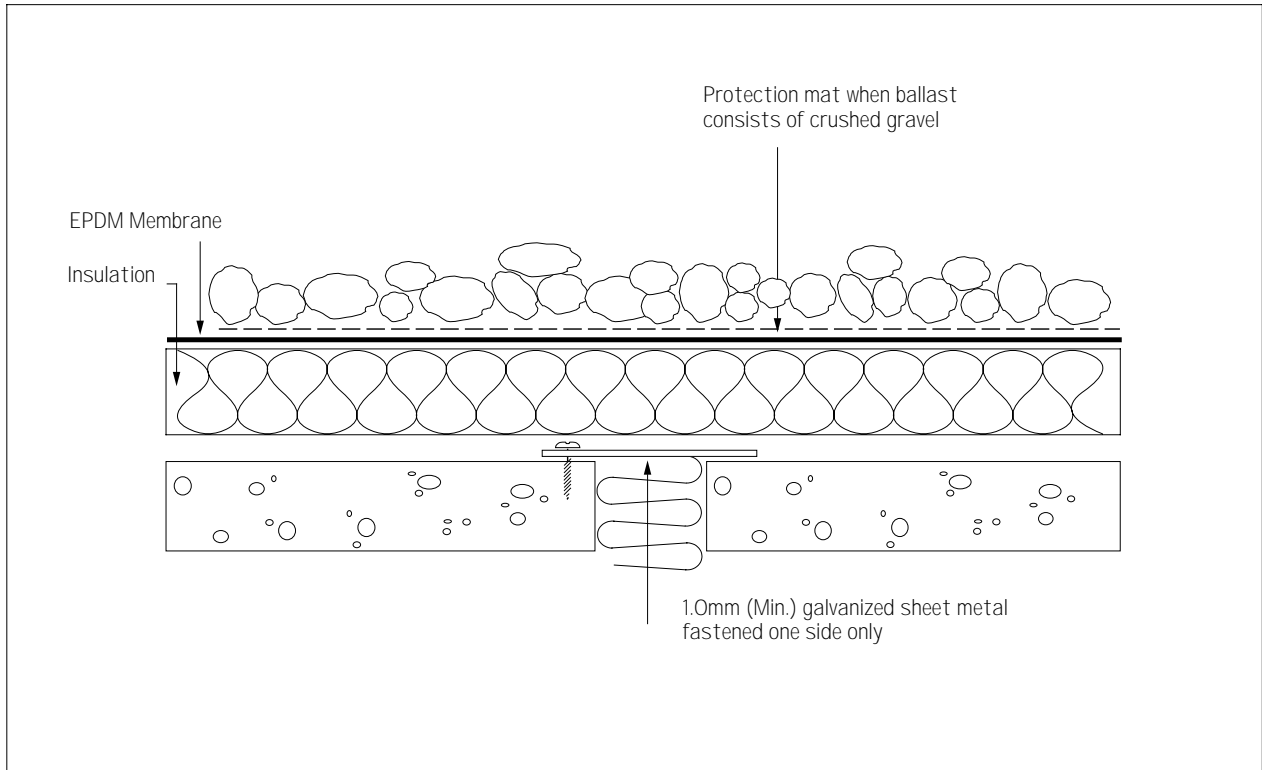
**No. :** E - T - 10  
10 / 1995

**Systems**  
All

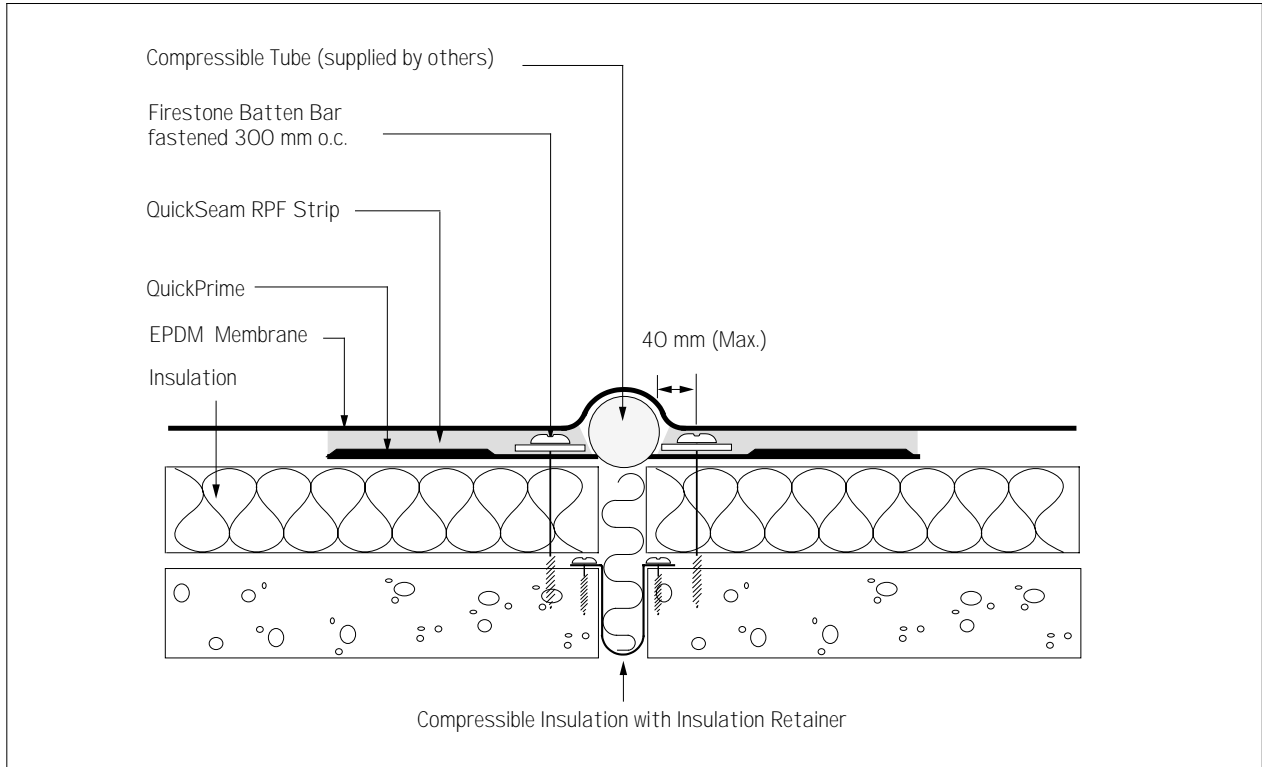


## 5.5 EXPANSION JOINTS

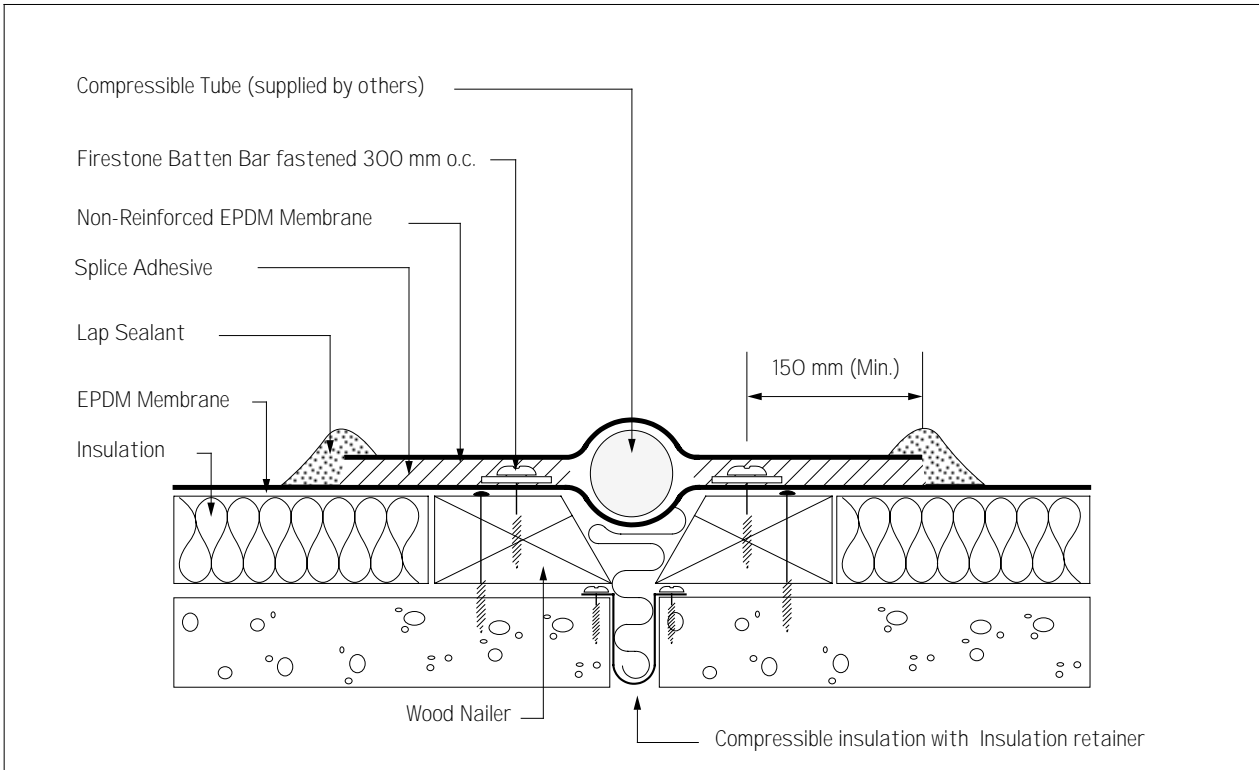
DETAIL No.	EPDM - DETAIL	SYSTEMS
E-E-1	Flat Expansion Joint	Ballast, Inverted
E-E-2	Flat Expansion Joint With QSRPF Strip	All
E-E-3	Flat Expansion Joint With Batten Strip	Adhered, MAS, BIS, Reinforced
E-E-4	Existing Expansion Joint	All
E-E-5	Raised Expansion Joint with QSRPF Strip	All
E-E-6	Raised Expansion Joint With Batten Bar	All
E-E-7	Raised Expansion Joint With QSRPF Strip	All
E-E-8	Raised Expansion Joint With Batten Bar	All
E-E-9	Wall Expansion Joint With QSRPF Strip	All
E-E-10	Wall Expansion Joint With Batten Bar	All



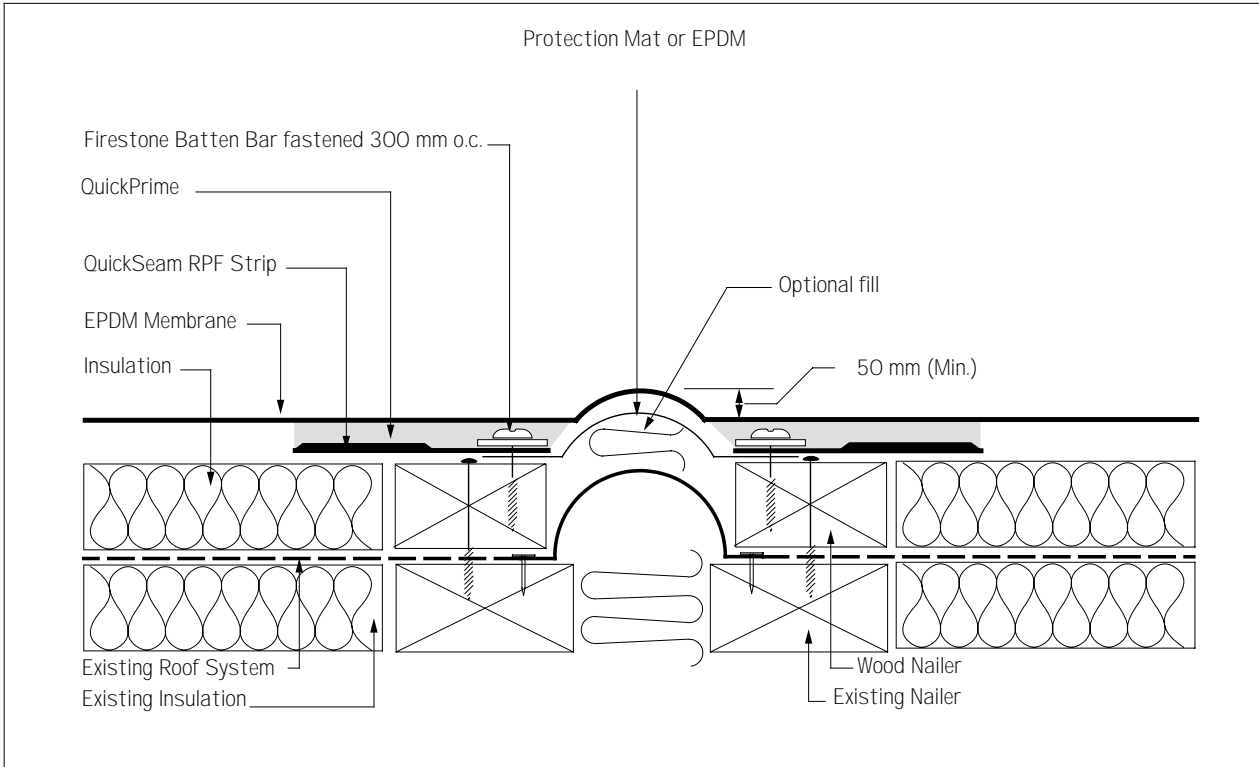
<b>Firestone</b> BUILDING PRODUCTS EUROPE	<b>EPDM - DETAIL</b> Flat Expansion Joint	<b>No. :</b> E - E - 1	<b>Systems</b> Ballasted, Inverted
		10 / 1995	



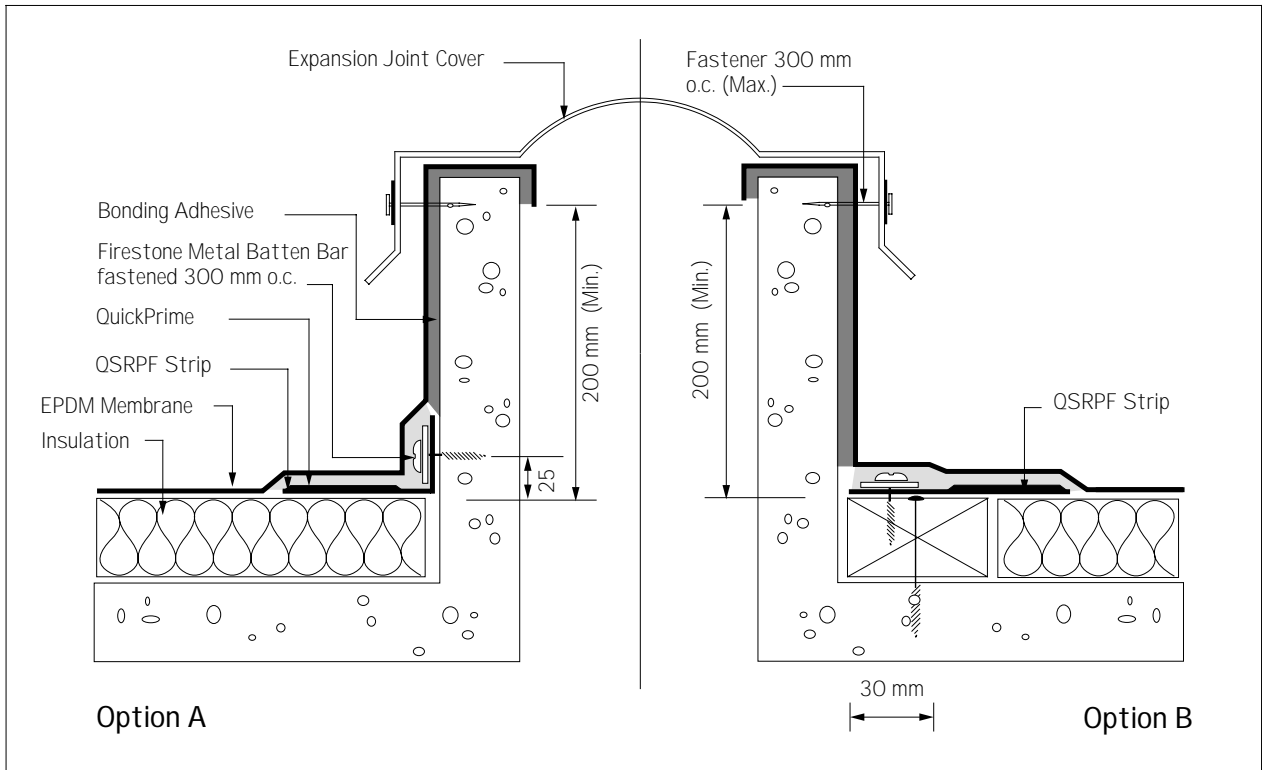
<b>Firestone</b> BUILDING PRODUCTS EUROPE	<b>EPDM - DETAIL</b> Flat Expansion Joint With QuickSeam RPF Strip	<b>No. :</b> E - E - 2	<b>Systems</b> All
		12 / 1996	



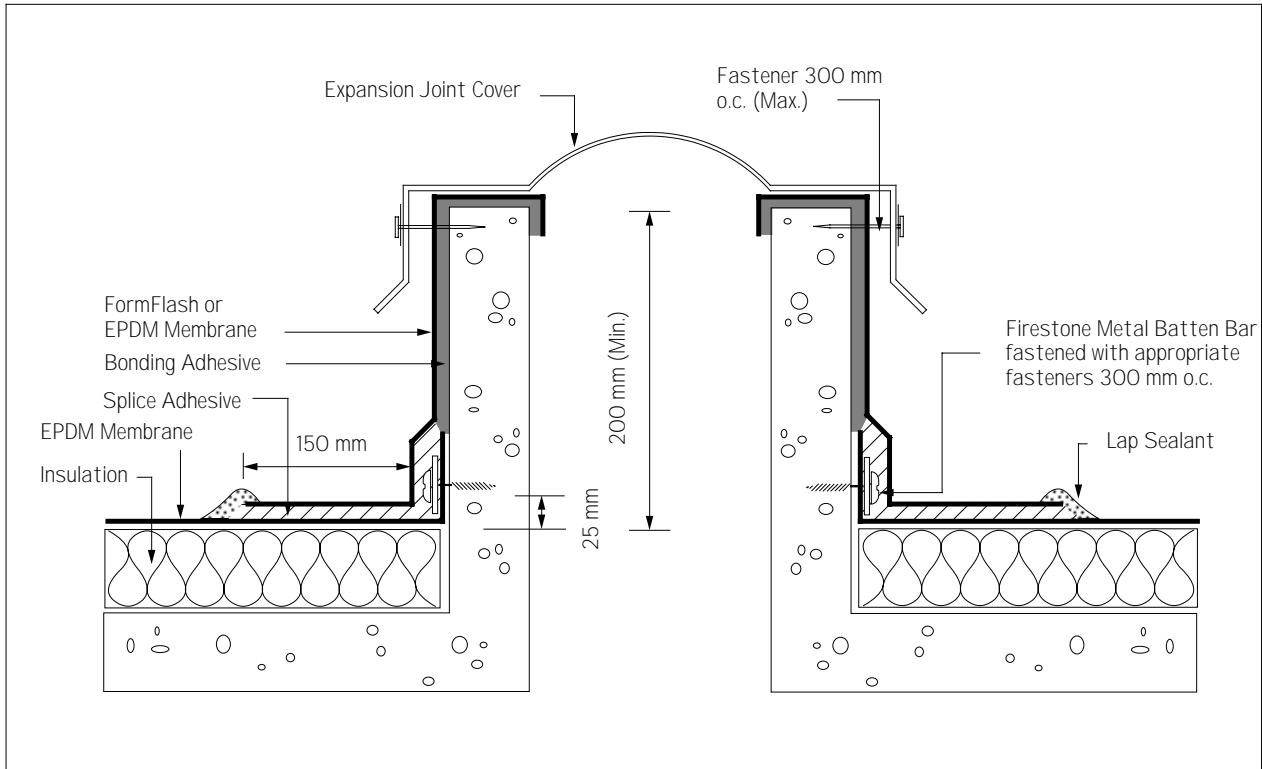
	<b>EPDM - DETAIL</b> Flat Expansion Joint Detail with Batten Bar	<b>No. :</b> E - E - 3	<b>Systems</b> Adhered, MAS, Reinforced
		10 / 1995	



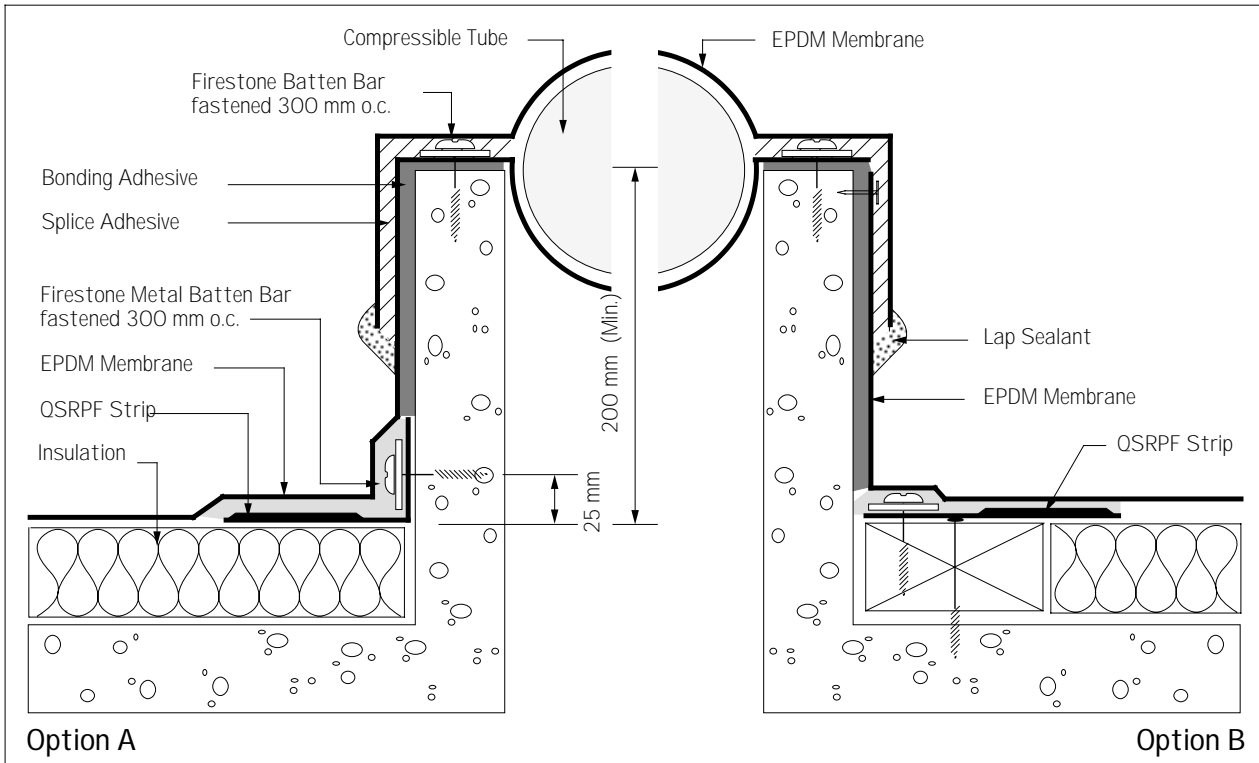
	<b>EPDM - DETAIL</b> Existing Expansion Joint	<b>No. :</b> E - E - 4	<b>Systems</b> Ballasted
		12 / 1996	



 <b>Firestone</b> BUILDING PRODUCTS EUROPE	<b>EPDM - DETAIL</b> Raised Expansion Joint With QuickSeam RPF Strip	No. : E - E - 5	<b>Systems</b> All
		12 / 1996	



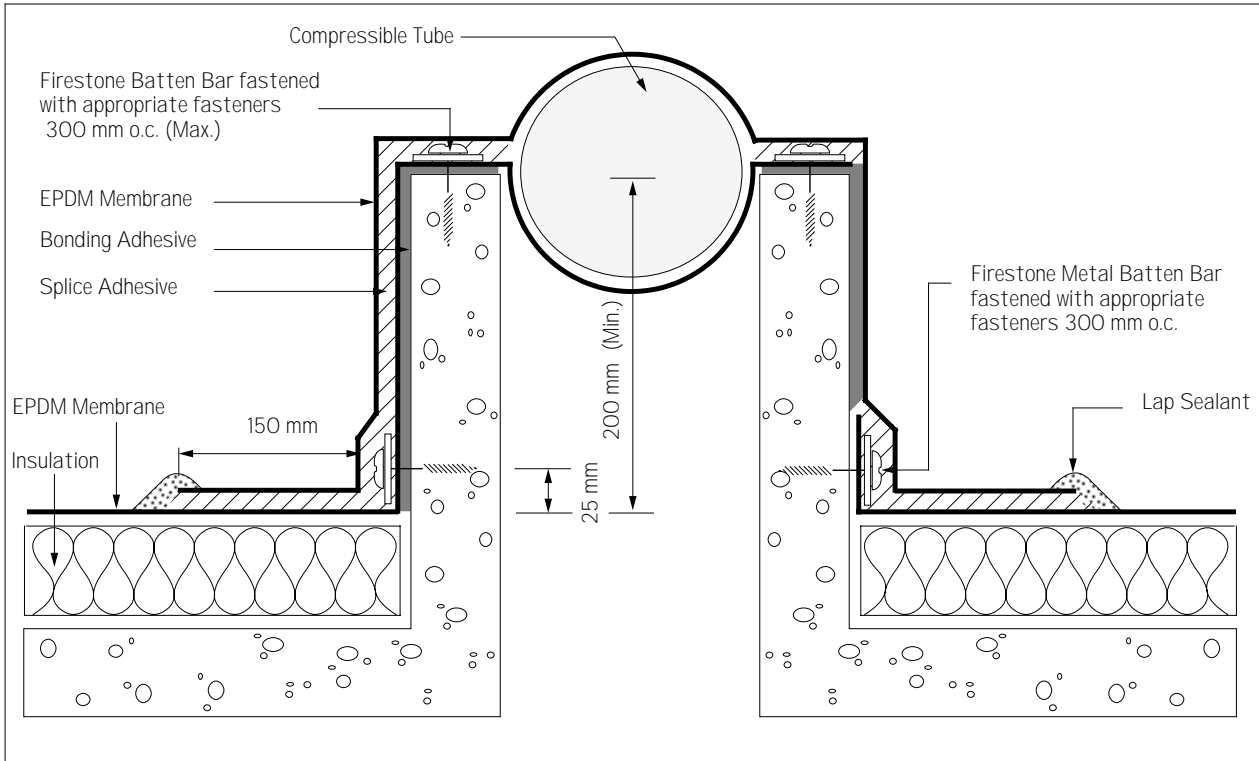
 <b>Firestone</b> BUILDING PRODUCTS EUROPE	<b>EPDM - DETAIL</b> Raised Expansion Joint With Batten Bar	No. : E - E - 6	<b>Systems</b> All
		10 / 1995	



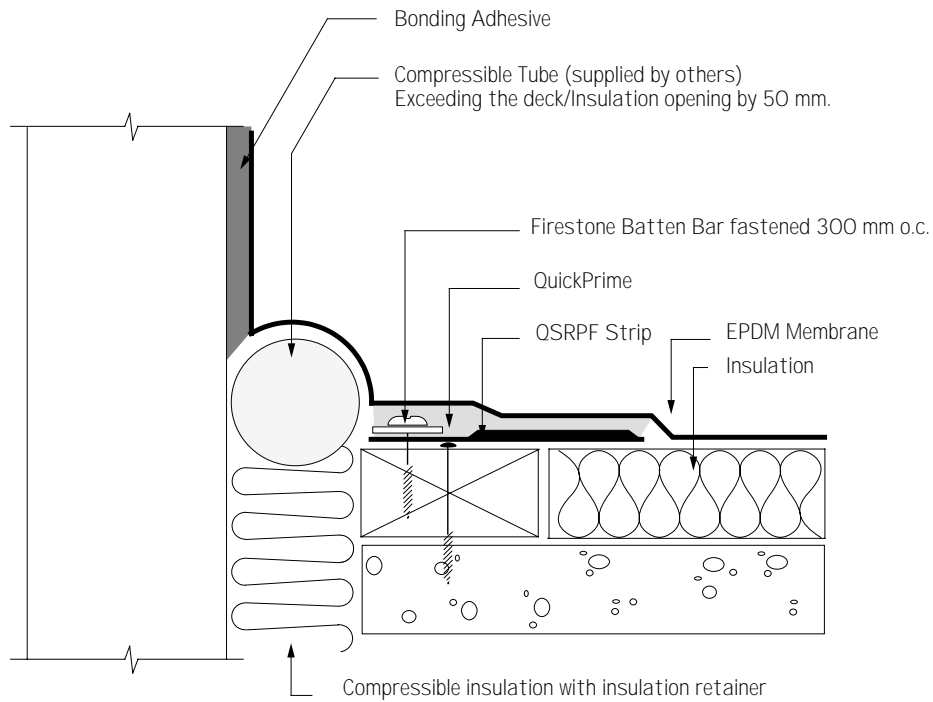
Option A

Option B

 <b>BUILDING PRODUCTS EUROPE</b>	<b>EPDM - DETAIL</b> Raised Expansion Joint With QuickSeam RPF Strip	<b>No. :</b> E - E - 7	<b>Systems</b> All
		12 / 1996	



 <b>BUILDING PRODUCTS EUROPE</b>	<b>EPDM - DETAIL</b> Raised Expansion Joint With Batten Bar	<b>No. :</b> E - E - 8	<b>Systems</b> All
		10 / 1995	

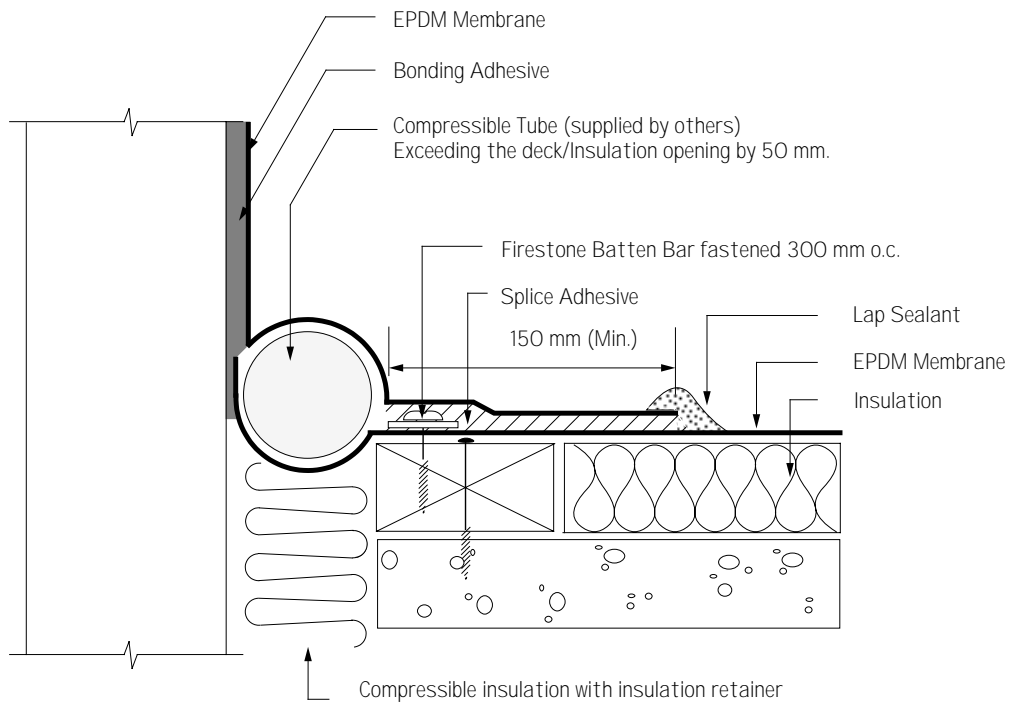


**Firestone**  
BUILDING PRODUCTS EUROPE

**EPDM - DETAIL**  
Wall Expansion Joint  
With QuickSeam RPF Strip

**No. :** E - E - 9  
12 / 1996

**Systems**  
All



**Firestone**  
BUILDING PRODUCTS EUROPE

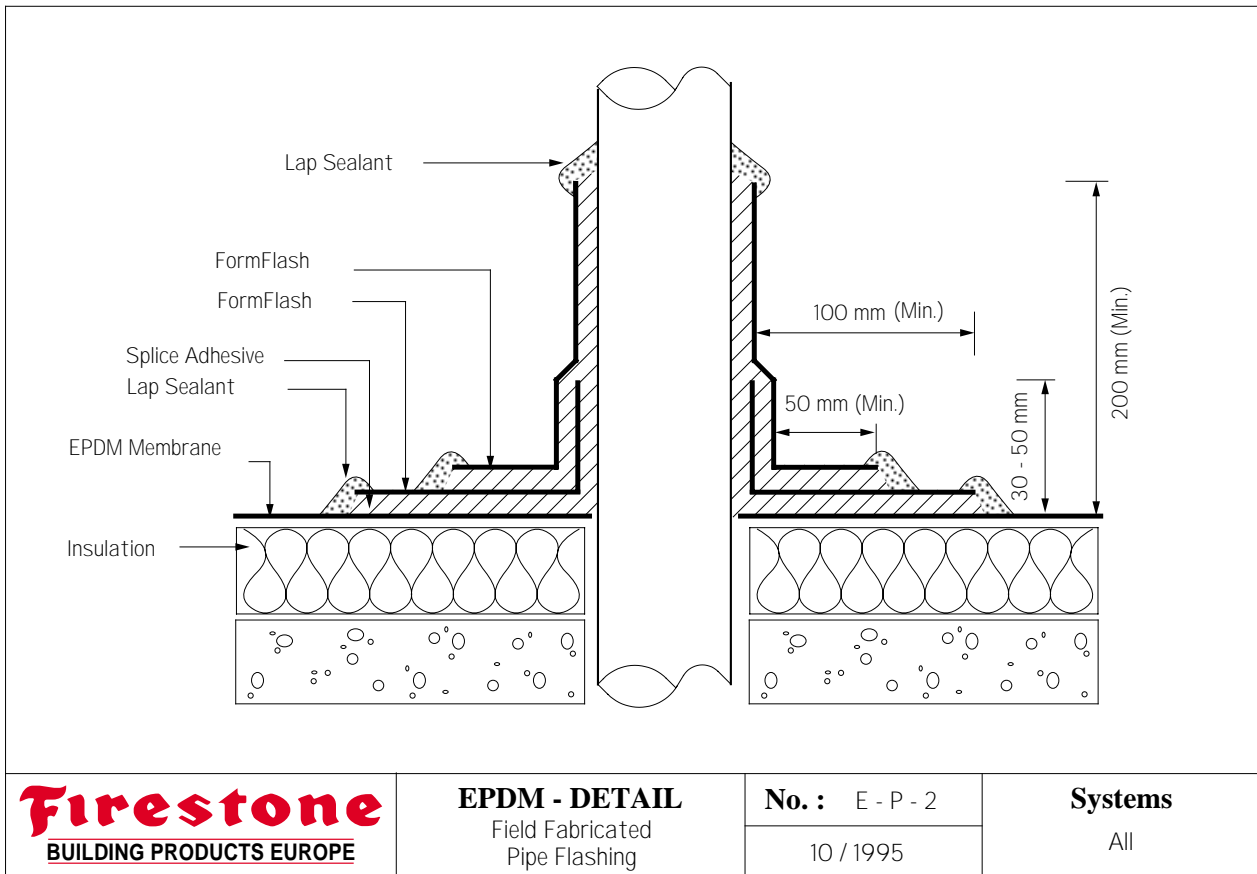
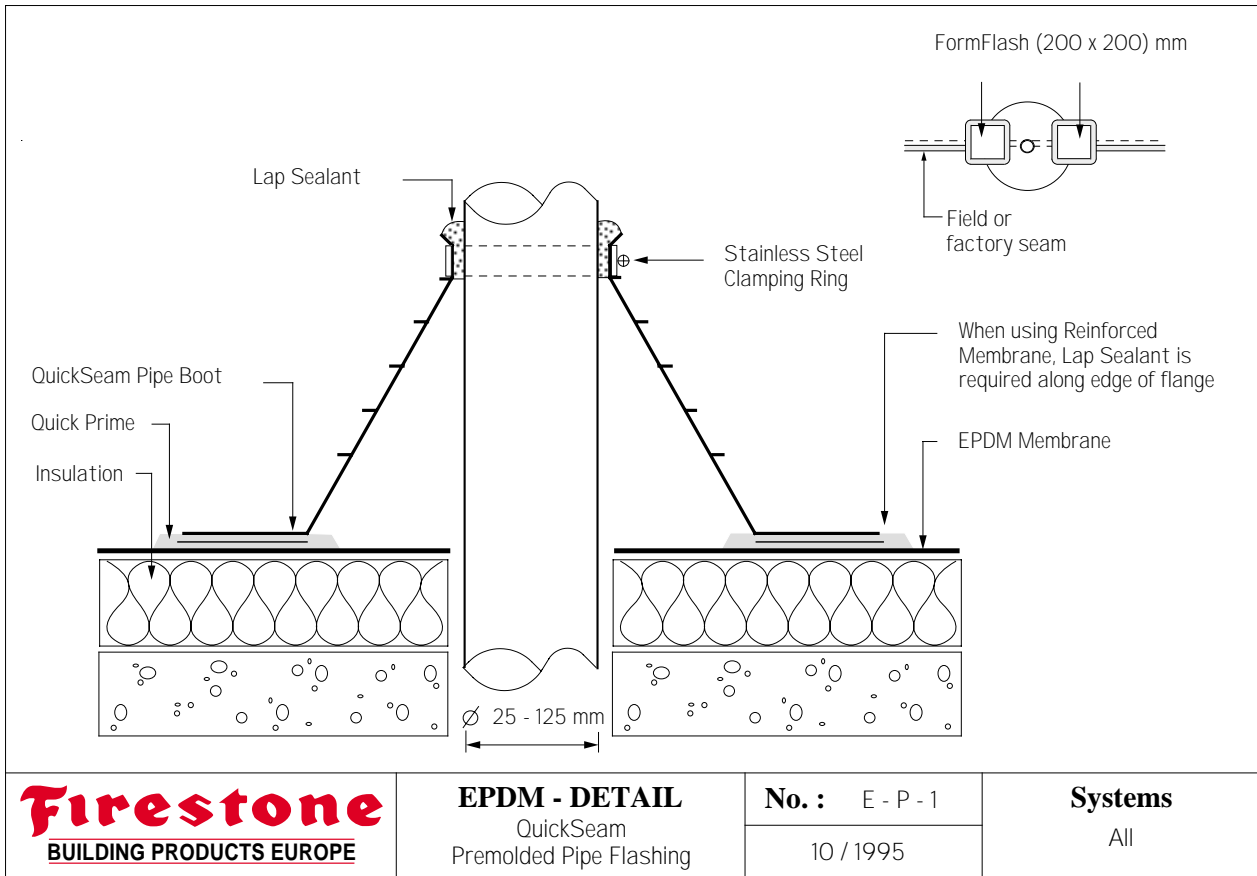
**EPDM - DETAIL**  
Wall Expansion Joint  
With Batten Bar

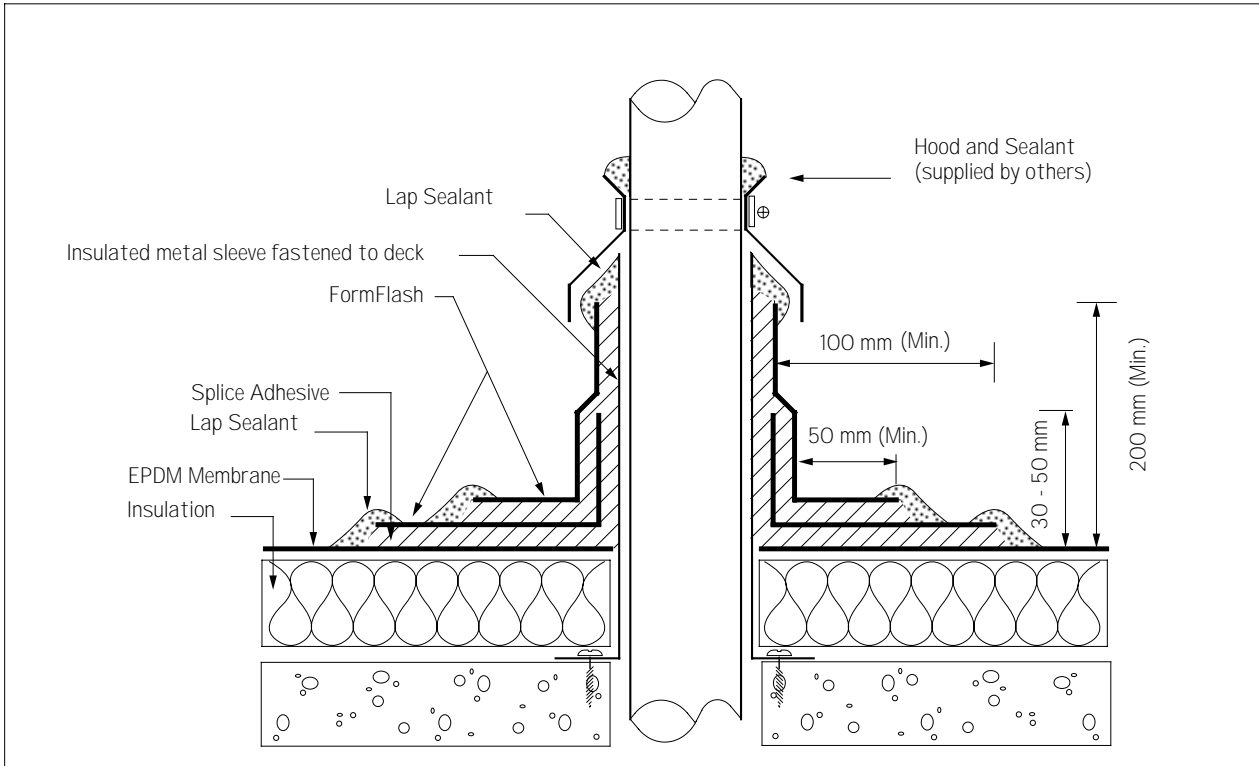
**No. :** E - E - 10  
10 / 1995

**Systems**  
All

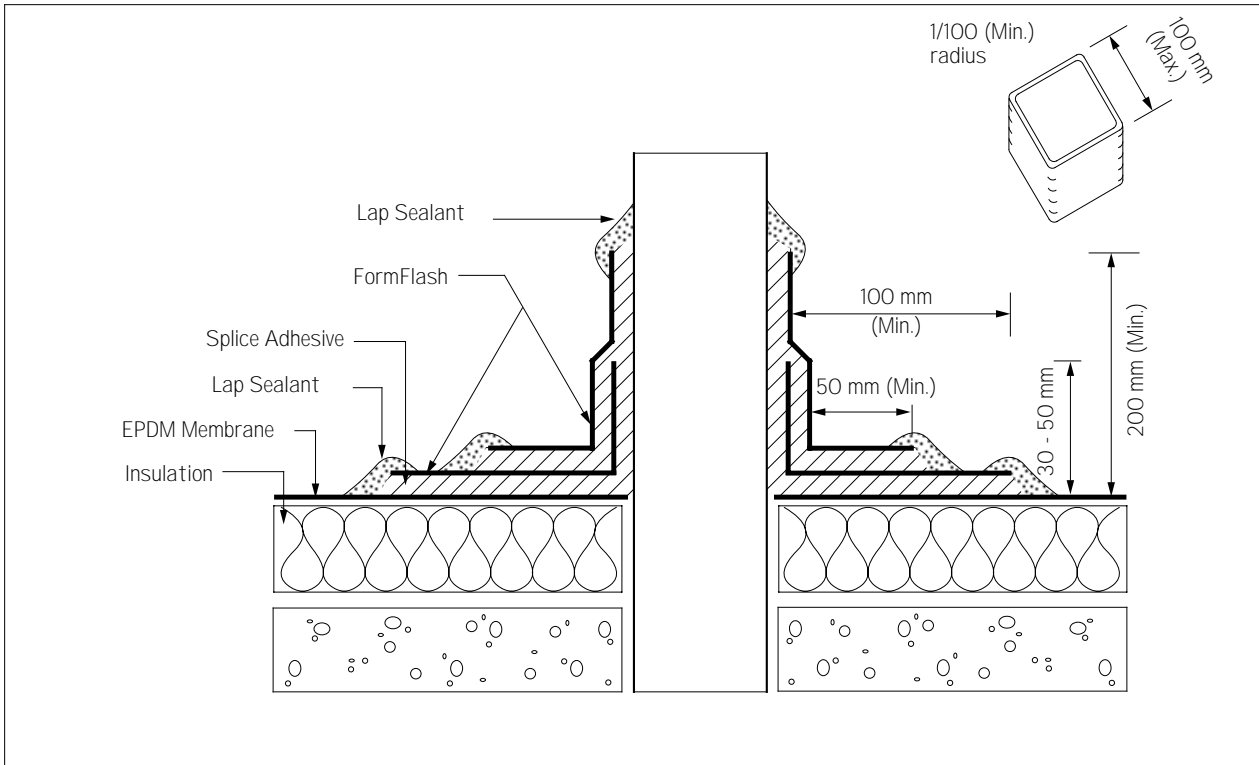
## 5.6 PENETRATIONS

DETAIL No.	EPDM - DETAIL	SYSTEMS
E-P-1	QuickSeam Pre-molded Pipe Flashing	All
E-P-2	Field Fabricated Pipe Flashing	All
E-P-3	Hot Pipe Flashing	All
E-P-4	Field Fabricated Tube Flashing	All
E-P-5	Penetration Pocket	All
E-P-6	Pipe Batten Layout With EPDM Target Piece	MAS,BIS, Reinforced
E-P-7	Pipe Batten Layout With QuickSeam Batten Cover	MAS, BIS, Reinforced

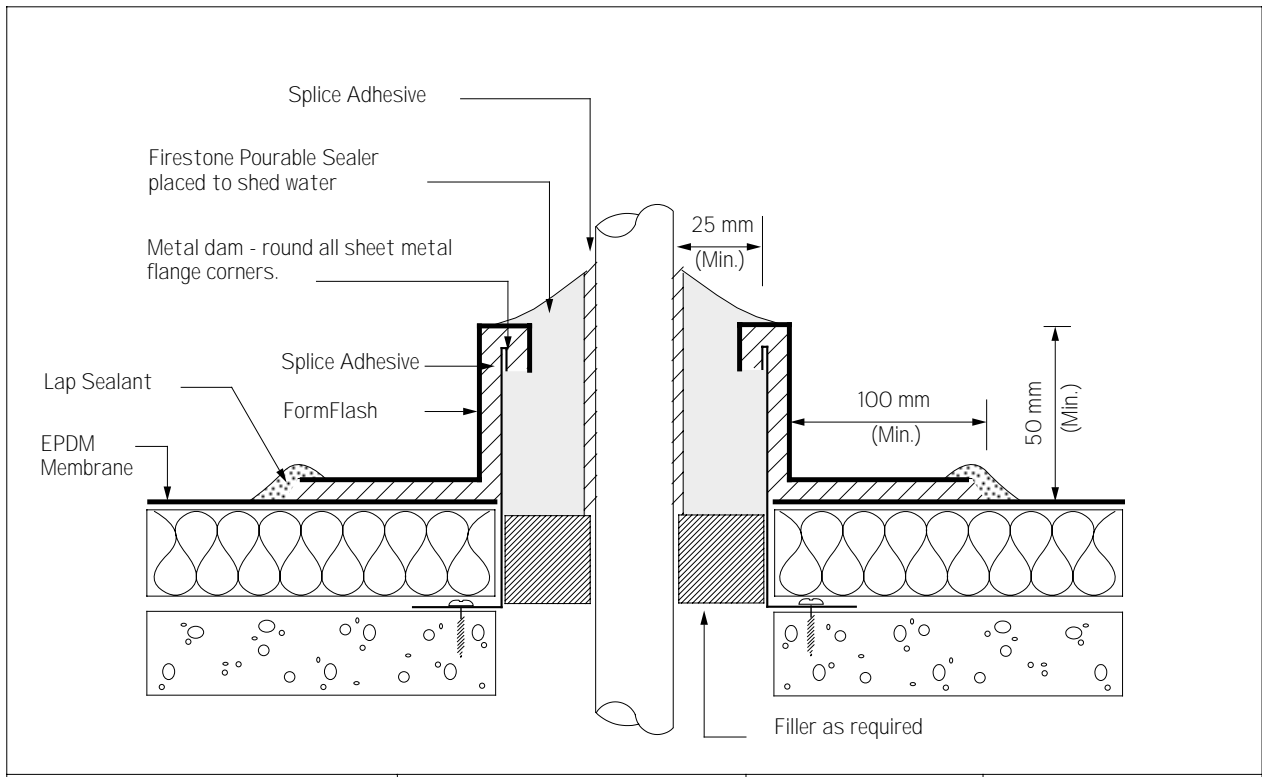




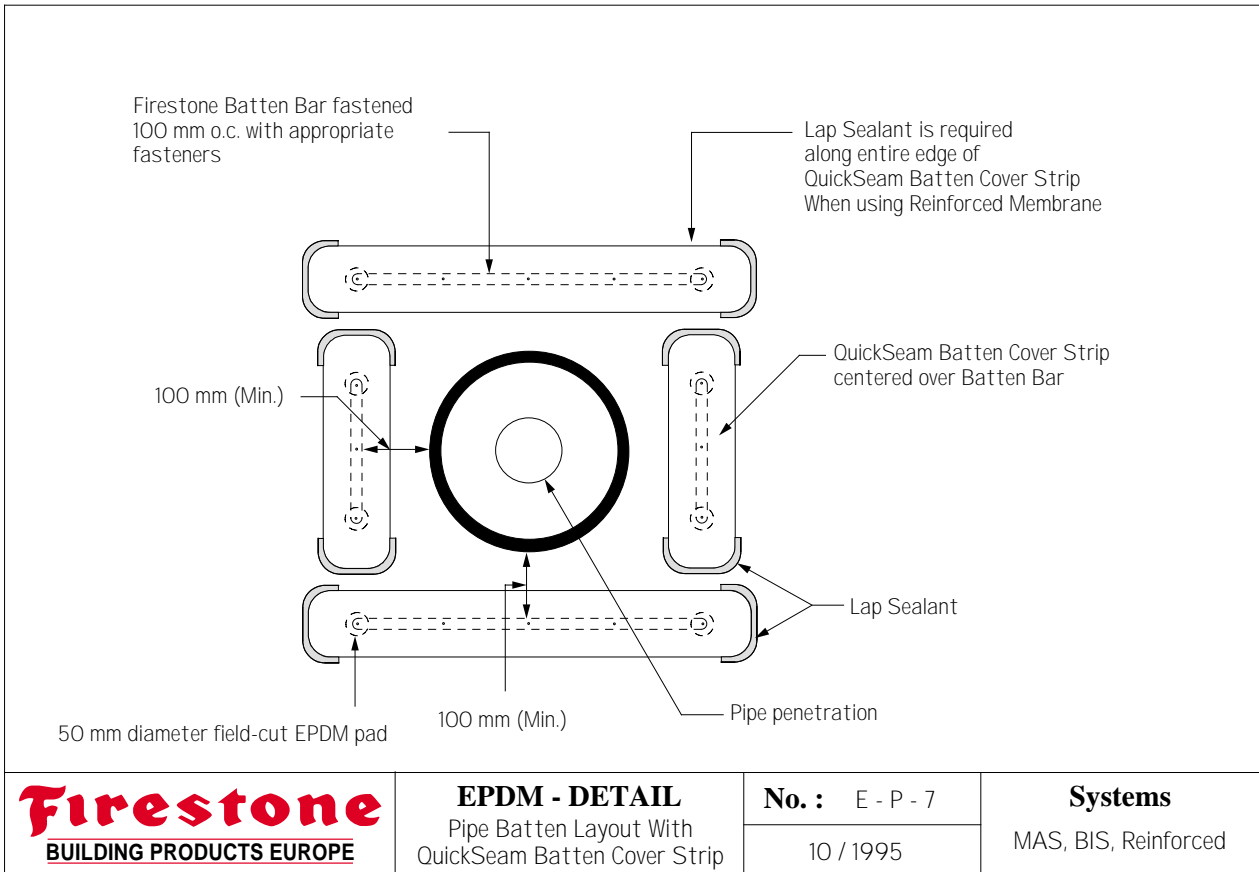
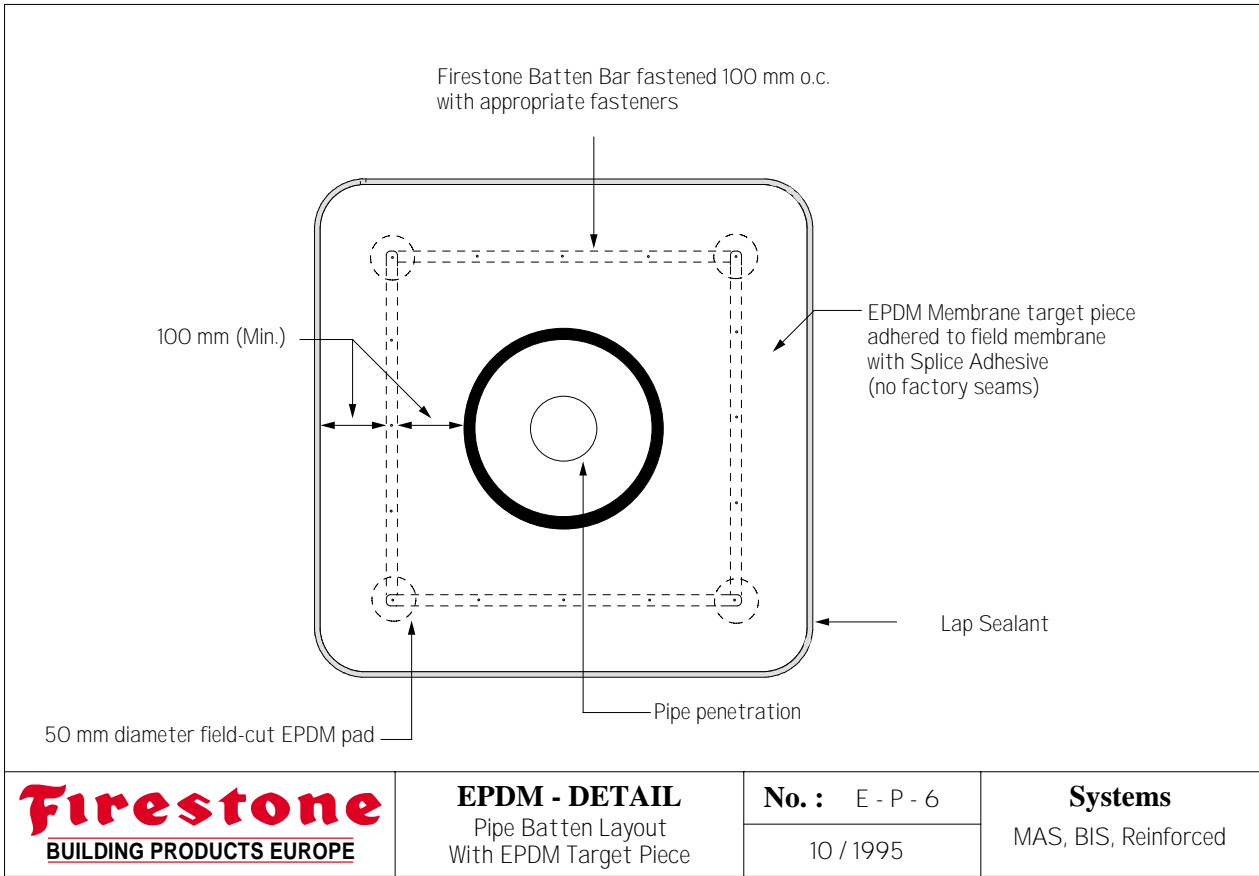
<b>Firestone</b> BUILDING PRODUCTS EUROPE	<b>EPDM - DETAIL</b> Hot Pipe Flashing	<b>No. :</b> E - P - 3	<b>Systems</b> All
		10 / 1995	



<b>Firestone</b> BUILDING PRODUCTS EUROPE	<b>EPDM - DETAIL</b> Field Fabricated Tube Flashing	<b>No. :</b> E - P - 4	<b>Systems</b> All
		10 / 1995	



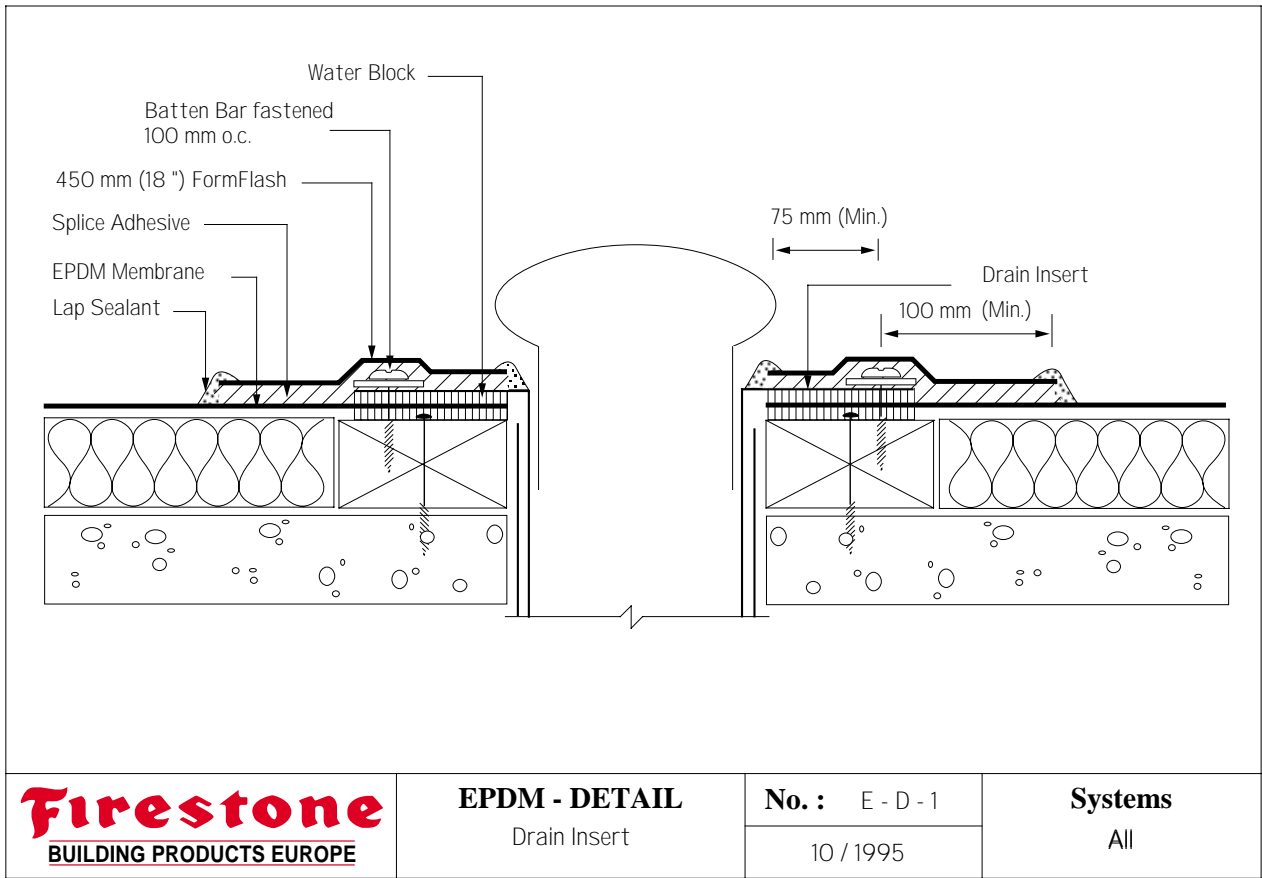
<b>Firestone</b> BUILDING PRODUCTS EUROPE	<b>EPDM - DETAIL</b> Penetration Pocket	<b>No. :</b> E - P - 5	<b>Systems</b> All
		10 / 1995	

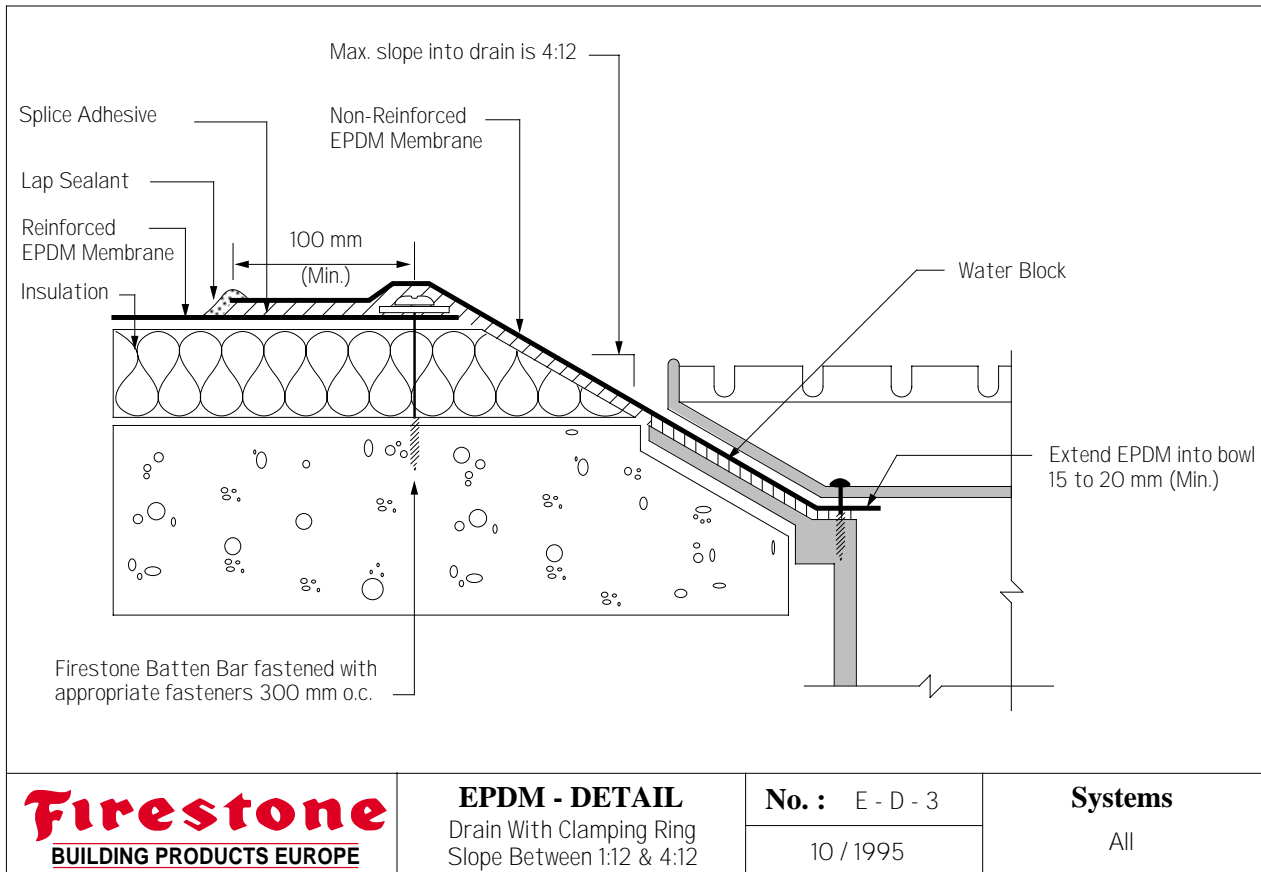
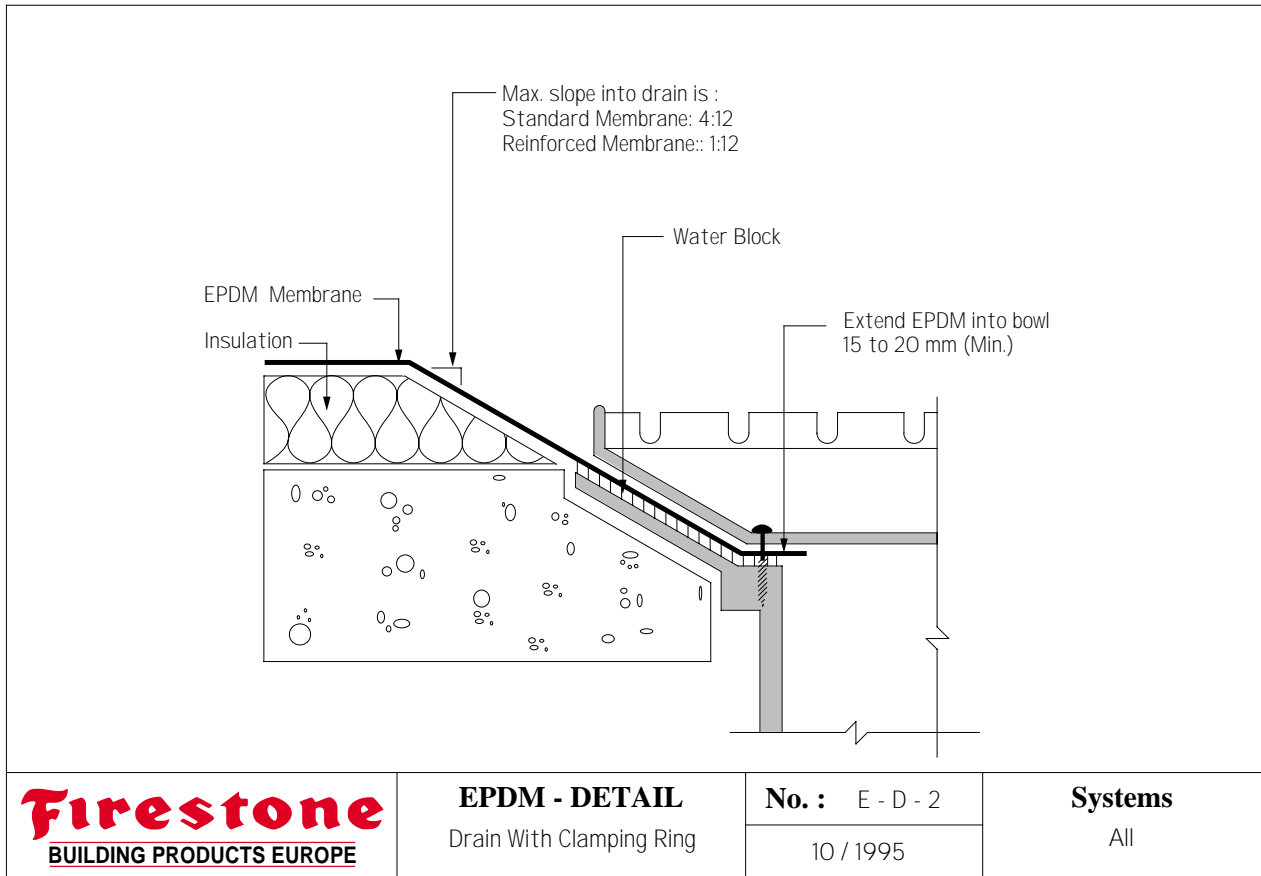


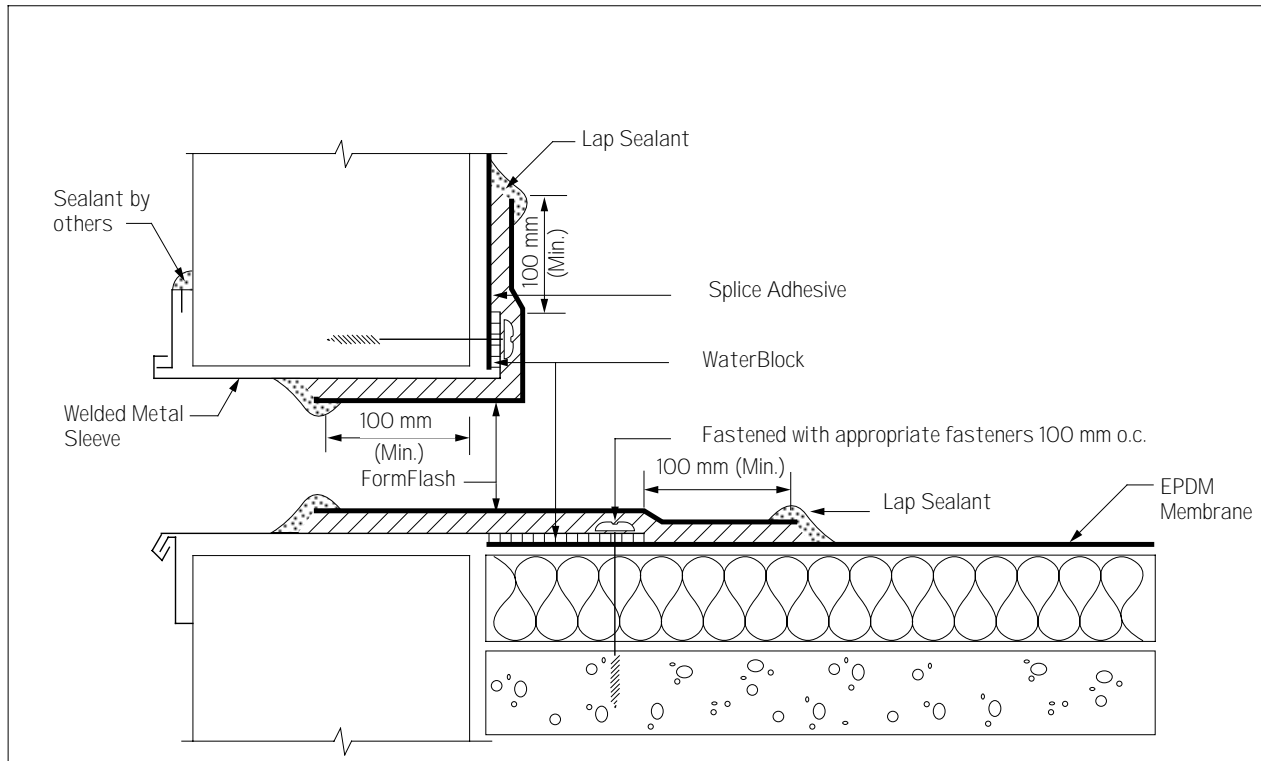


## 5.7 DRAINS

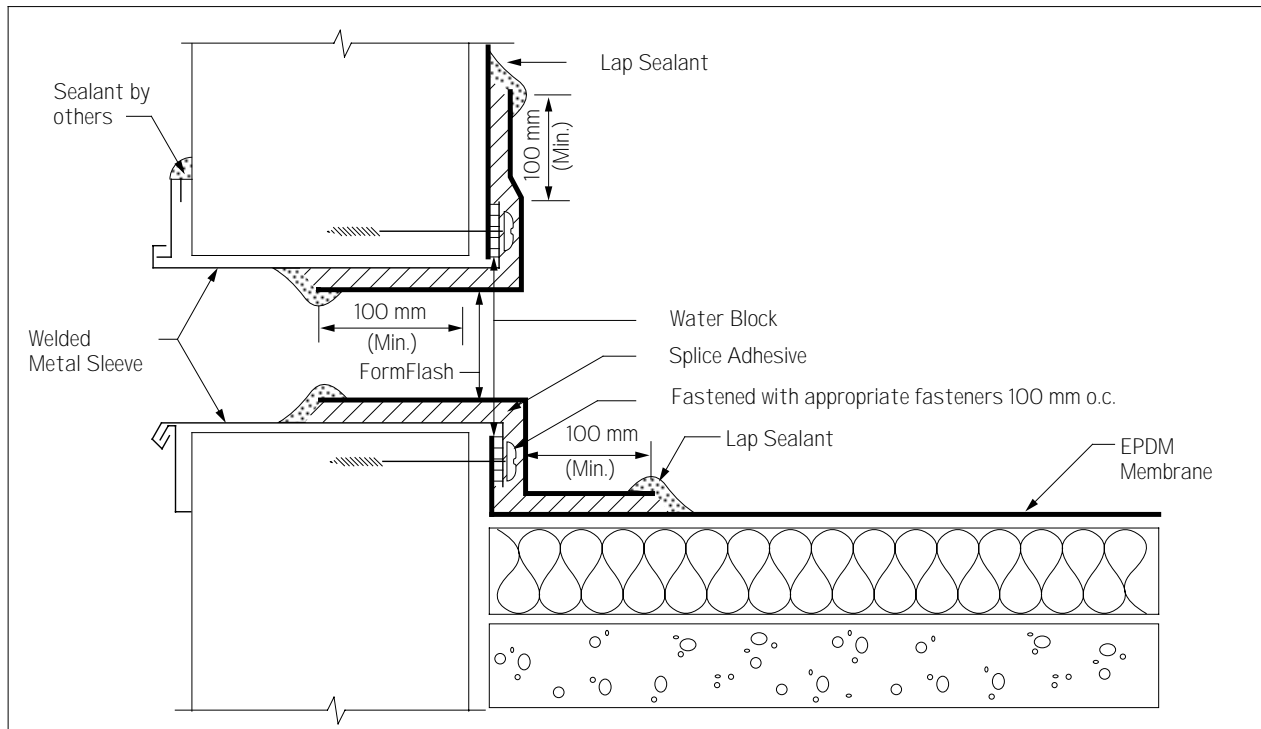
DETAIL No.	EPDM - DETAIL	SYSTEMS
E-D-1	Drain Insert	All
E-D-2	Drain With Clamping Ring	All
E-D-3	Drain With Clamping Ring, Slope Between 1:12 & 4:12	All
E-D-4	Scupper	All
E-D-5	Overflow Scupper	All







<b>Firestone</b> BUILDING PRODUCTS EUROPE	<b>EPDM - DETAIL</b> Scupper	<b>No. :</b> E - D - 4	<b>Systems</b> All
		10 / 1995	

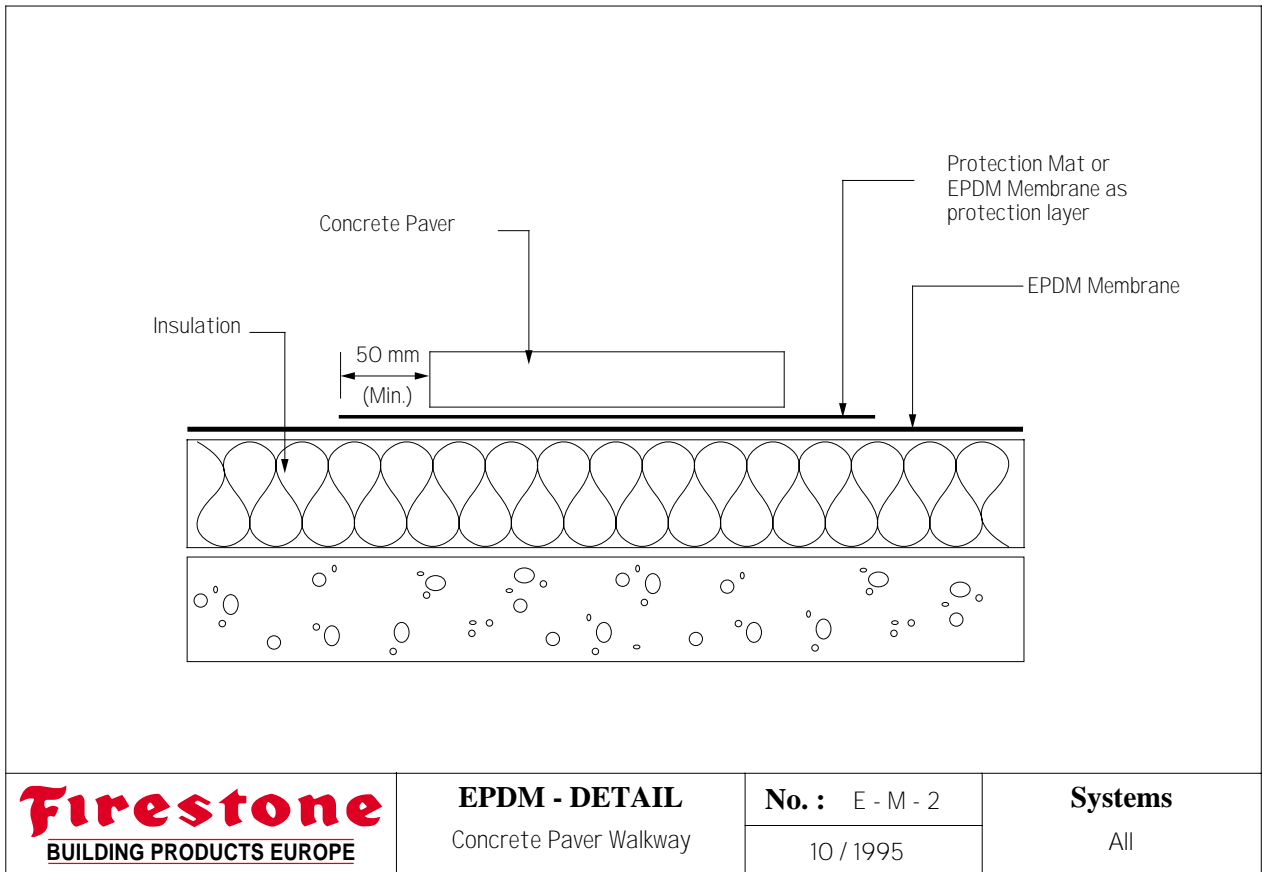
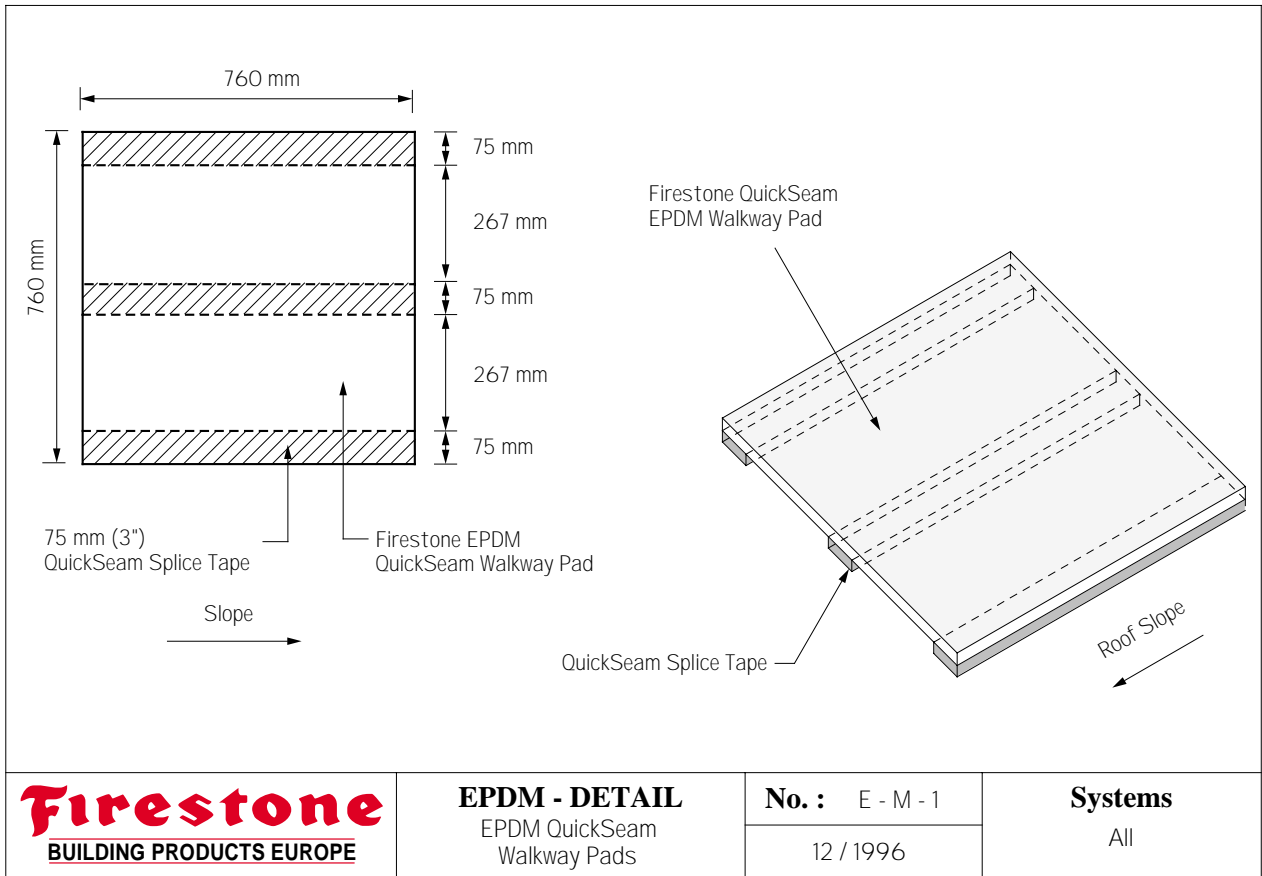


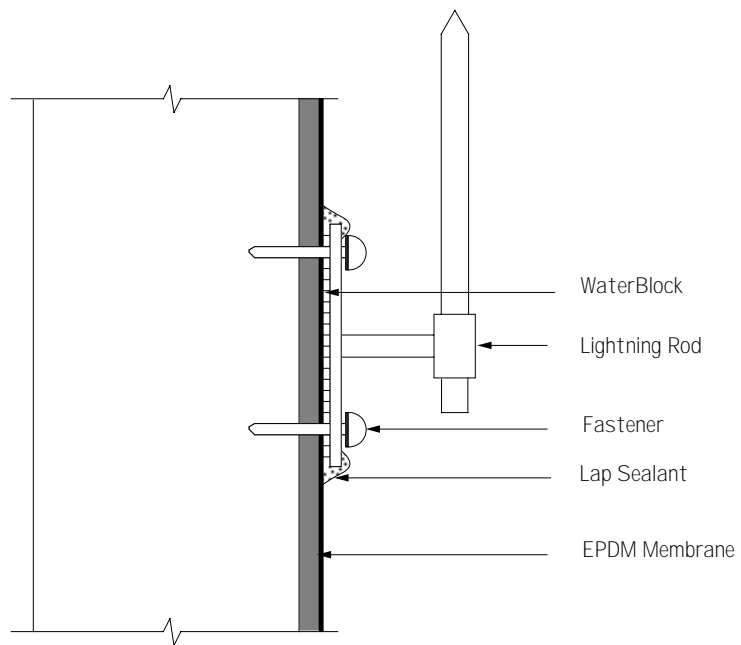
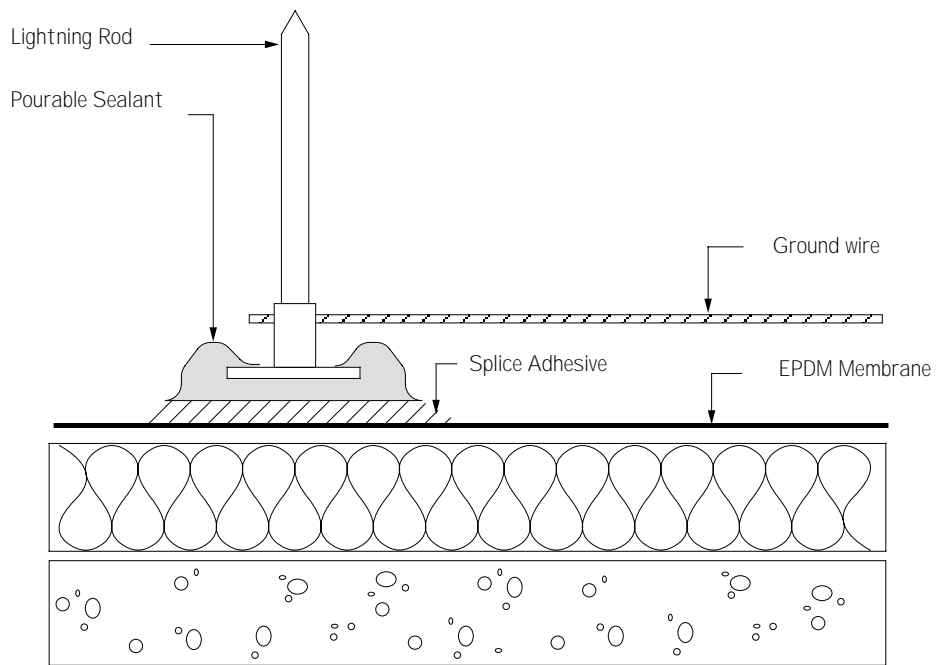
<b>Firestone</b> BUILDING PRODUCTS EUROPE	<b>EPDM - DETAIL</b> Overflow Scupper	<b>No. :</b> E - D - 5	<b>Systems</b> All
		10 / 1995	



## 5.8 MISCELLANEOUS

DETAIL No.	EPDM - DETAIL	SYSTEMS
E-M-1	EPDM QuickSeam Walkway Pads	All
E-M-2	Concrete Paver Walkway	All
E-M-3	Lightning Rod Attachment	All





**Firestone**  
BUILDING PRODUCTS EUROPE

**EPDM - DETAIL**  
Lightning Rod Attachments

**No. :** E - M - 3  
10 / 1995

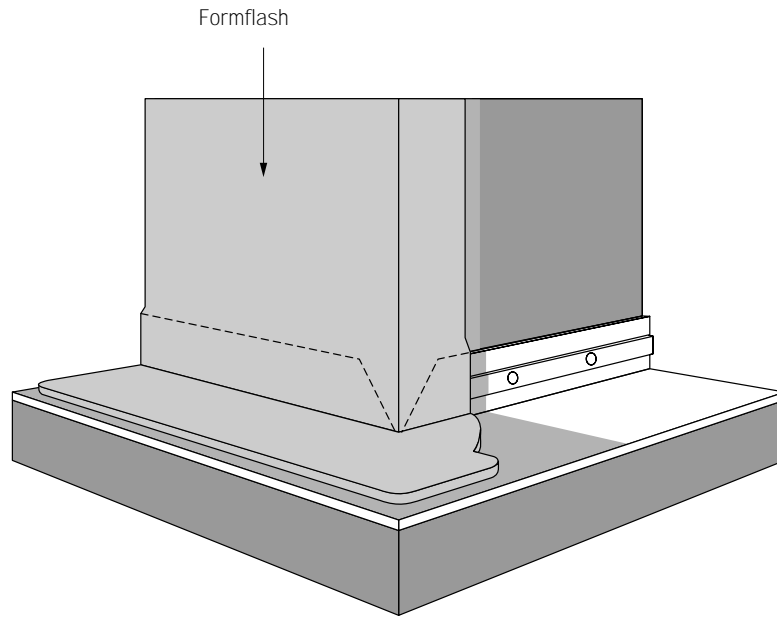
**Systems**  
All



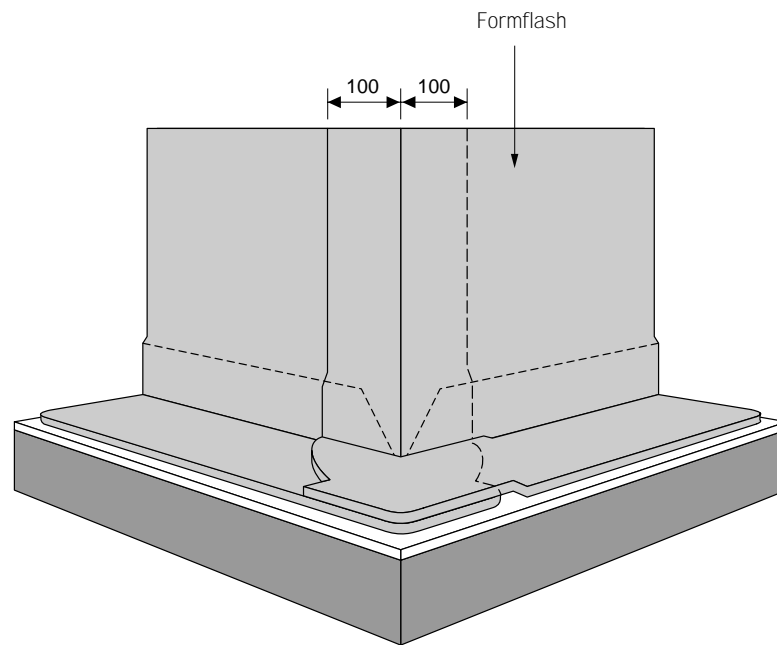
## 5.9 CORNERS

DETAIL No.	EPDM - DETAIL	SYSTEMS
E-C-1a	Outside Corner Using Formflash	All
E-C-1b	Outside Corner Using QuickSeam Corner Flashing	All
E-C-2	Inside Corner	All

Step 1



Step 2



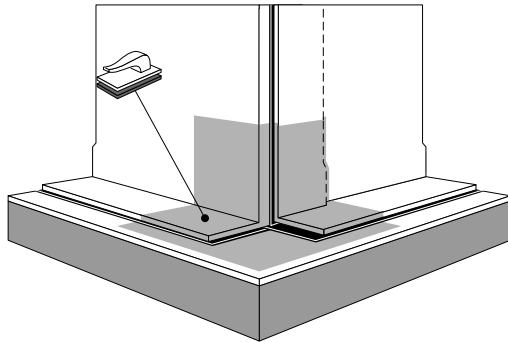
**Firestone**  
BUILDING PRODUCTS EUROPE

**EPDM - DETAIL**  
Outside Corner Using  
Formflash

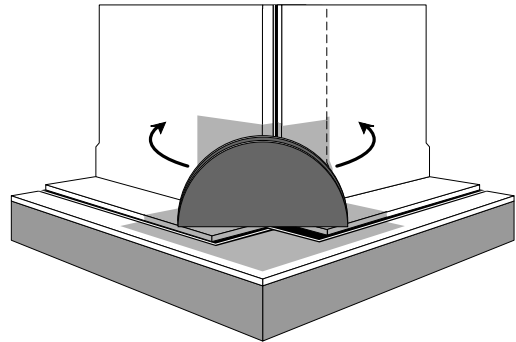
**No. :** E - C - 1 - A  
12 / 1996

**Systems**  
All

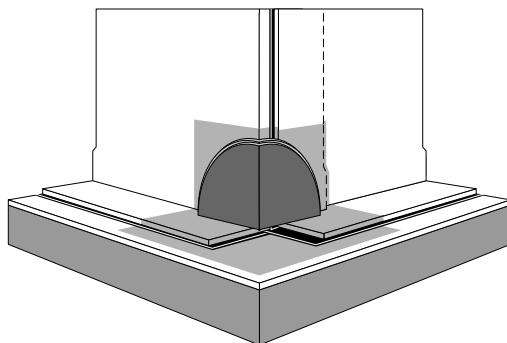
Step 1



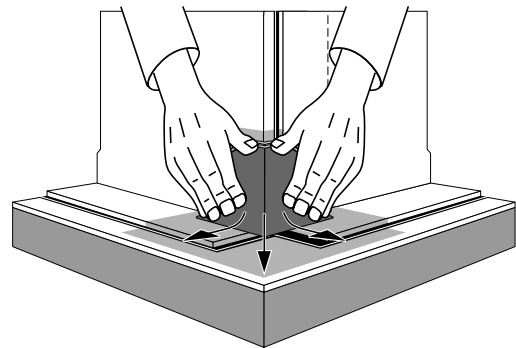
Step 2



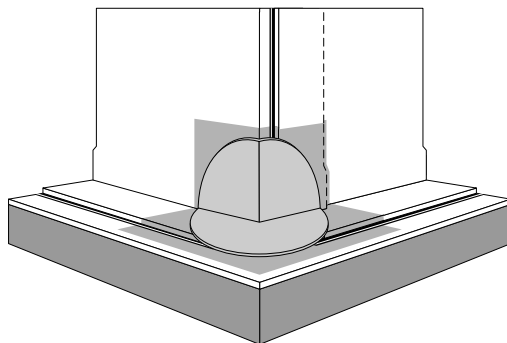
Step 3



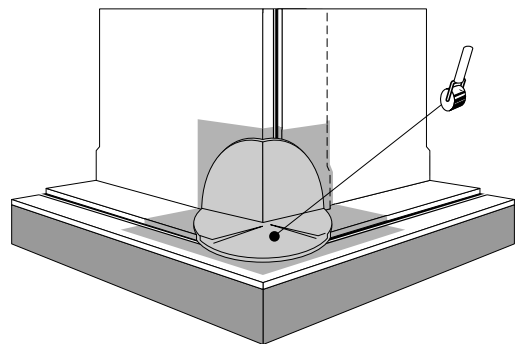
Step 4



Step 5



Step 6



**Firestone**  
BUILDING PRODUCTS EUROPE

**EPDM - DETAIL**  
Outside Corner Using  
QuickSeam Corner Flashing

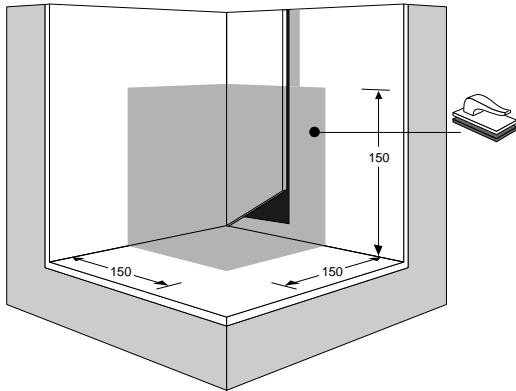
No. : E - C - 1 - B

12 / 1996

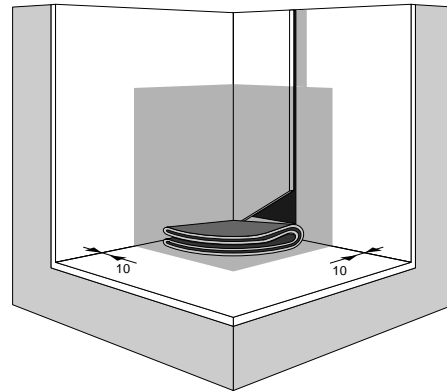
**Systems**

All

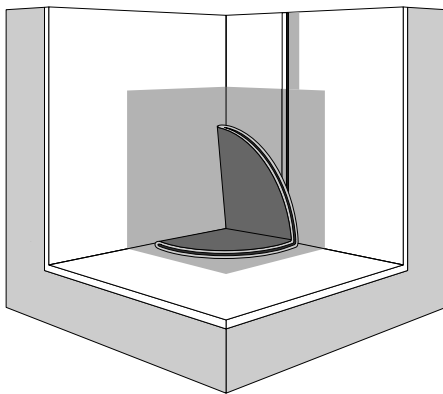
Step 1



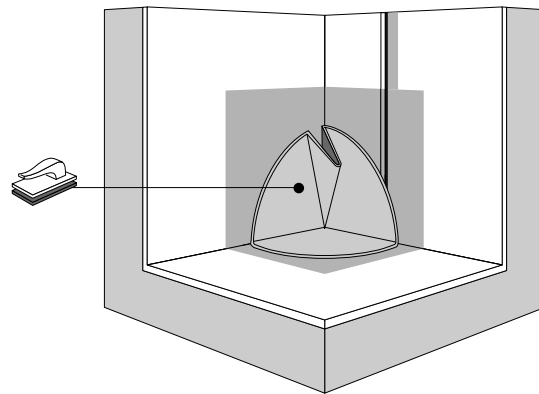
Step 2



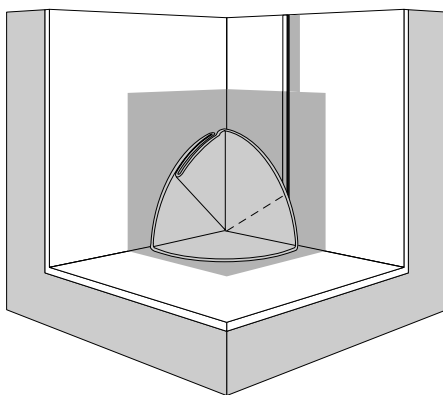
Step 3



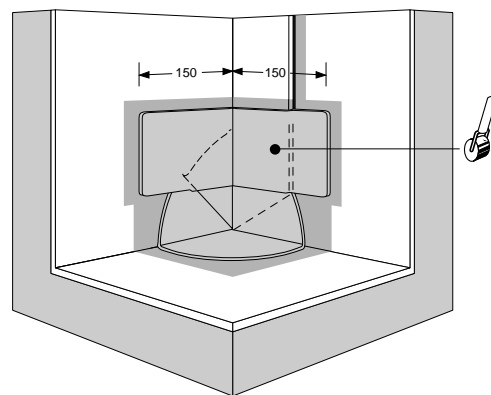
Step 4



Step 5



Step 6



**Firestone**  
BUILDING PRODUCTS EUROPE

**EPDM - DETAIL**  
Inside Corner Using  
QuickSeam Corner Flashing

No. : E - C - 2

12 / 1996

**Systems**

All