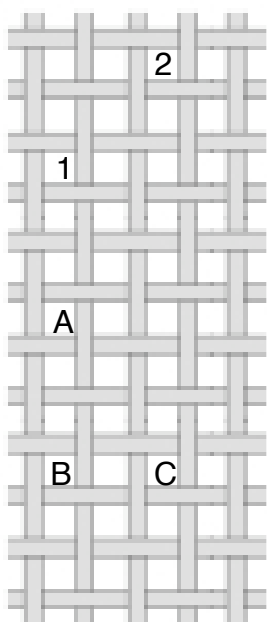


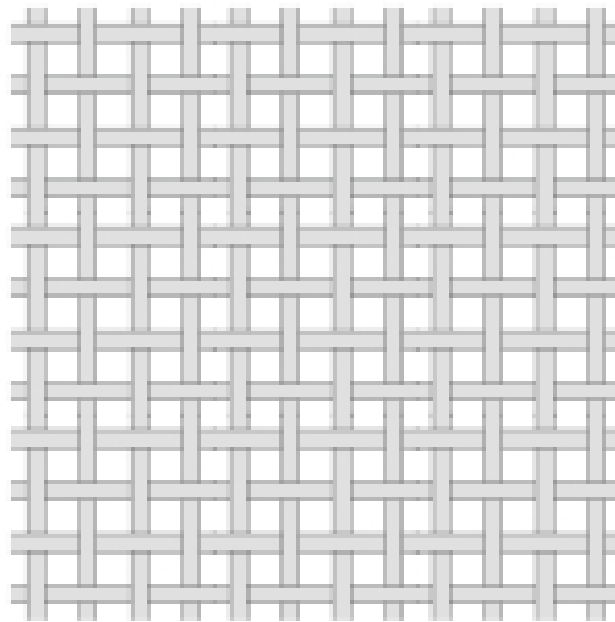
Stitching on linen, copyright Beth Katz, 2003 (katz@cs.millersville.edu)



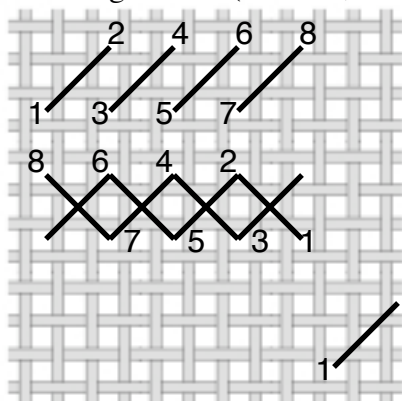
Come up at 1 and go down at 2 to start your stitch. The fabric thread that the bottom leg of the stitch pulls against is going up and over the sideways thread. This is secure.

If you always work this way, you can recognize that the stitch is placed at a correct location. For example, A is not a good place to start a stitch. It's off by one vertically. B and C are good places to start.

A would be good if your bottom leg goes \.

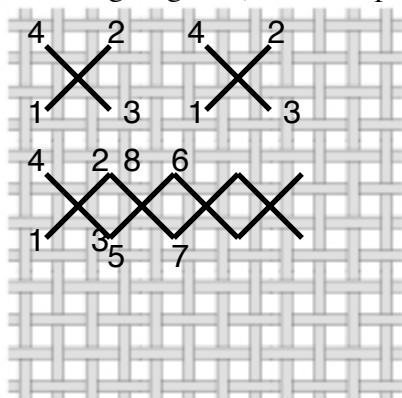


Stitching Danish (bottoms, then tops)



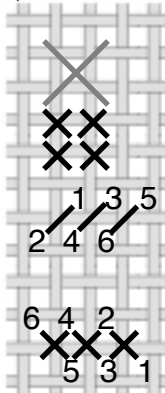
wrong start because fabric thread going up is going under the sideways fabric thread

Stitching English (bottom, top, bottom, top)



Stitching over one

(be sure over two will be correct)



Stitch English or if stitching Danish, stitch long bottom legs to keep stitching thread from wrapping around fabric threads