

Name _____

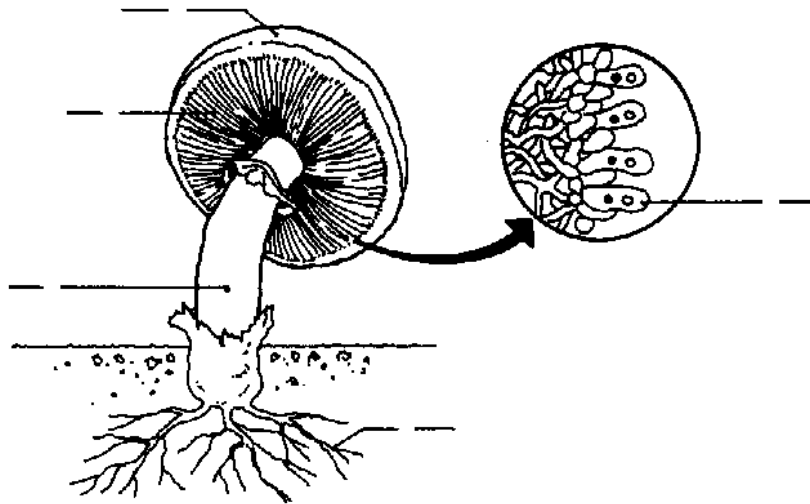
Date _____

Fungi

Directions: Identify the listed parts on each of the diagrams below.

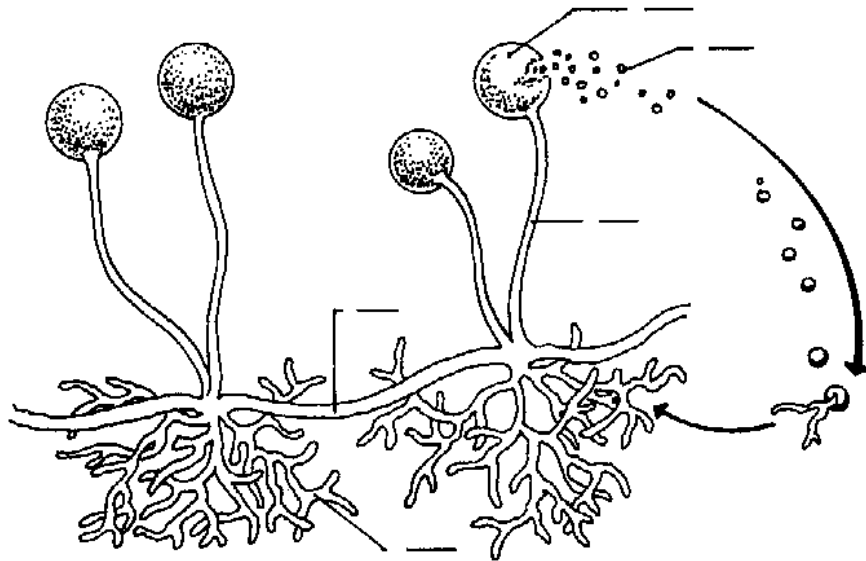
Mushroom

- A. basidium
- B. cap
- C. gills
- D. rhizoids
- E. stipe



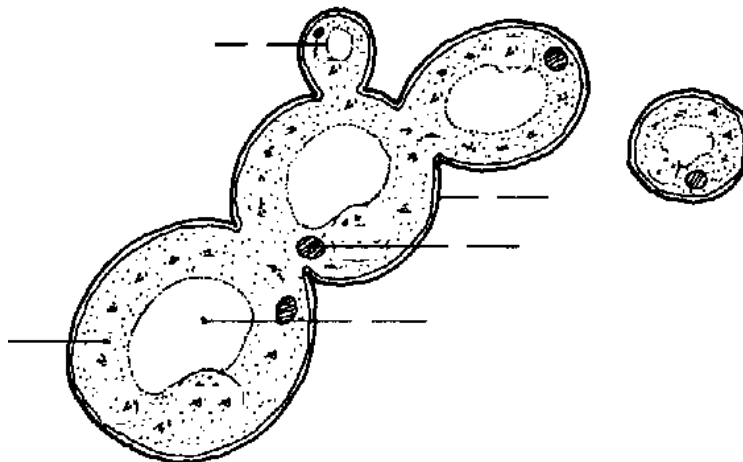
Bread Mold

- A. rhizoid
- B. sporangium
- C. sporangiophore
- D. spores
- E. stolon



Yeast

- A. bud
- B. cell wall
- C. cytoplasm
- D. nucleus
- E. vacuole



Directions: Write the letter of the correct answer on the line provided.

- _____ 1. During the process of ___?___ energy is released.
A. parasitism B. fermentation C. germination D. fragmentation
- _____ 2. ___?___ are rounded cases that produce many spores.
A. Basidia B. Hyphae C. Sporangia D. Buds
- _____ 3. Club fungi produce spores in a structure called a(n)
A. bud. B. basidium. C. ascus. D. stipe.
- _____ 4. Bread mold produces extensive masses of threadlike structures called
A. flagella. B. cilia. C. septa. D. hyphae.
- _____ 5. ___?___ are fungi that produce spores in special structures on the tips of their reproductive hyphae.
A. Yeasts B. Mushrooms C. Molds D. Puffballs
- _____ 6. ___?___ is a type of asexual reproduction in which an outgrowth from the parent organism becomes a new organism.
A. Budding B. Zygosporangium C. Fragmentation D. Binary Fission
- _____ 7. Sac fungi are fungi that produce spores inside a(n)
A. ascus. B. basidium. C. zygosporangium. D. bud.
- _____ 8. Fungi obtain their food by
A. respiration. B. mutualism. C. chemosynthesis. D. absorption.
- _____ 9. Club fungi include puffballs, bracket fungi, and
A. molds. B. yeasts. C. mushrooms. D. lichens.
- _____ 10. Unlike a plant, a fungus does not have
A. cell walls. B. chlorophyll. C. multiple cells. D. the ability to reproduce.
- _____ 11. Which one of the following fungi is used to flavor cheese?
A. mushrooms B. yeast C. molds D. smuts
- _____ 12. The basidia are found on what part of the mushroom?
A. stipe B. gills C. cap D. rhizoids
- _____ 13. The waste products of fermentation are
A. alcohol and carbon dioxide.
B. oxygen and sugar.
C. alcohol and water.
D. sugar and ATP.
- _____ 14. The cell walls of fungi are made of
A. cellulose. B. algin. C. silica. D. chitin.
- _____ 15. Which fungal phylum is believed to lack a method of sexual reproduction?
A. Deuteromycota B. Basidiomycota C. Ascomycota D. Zygomycota