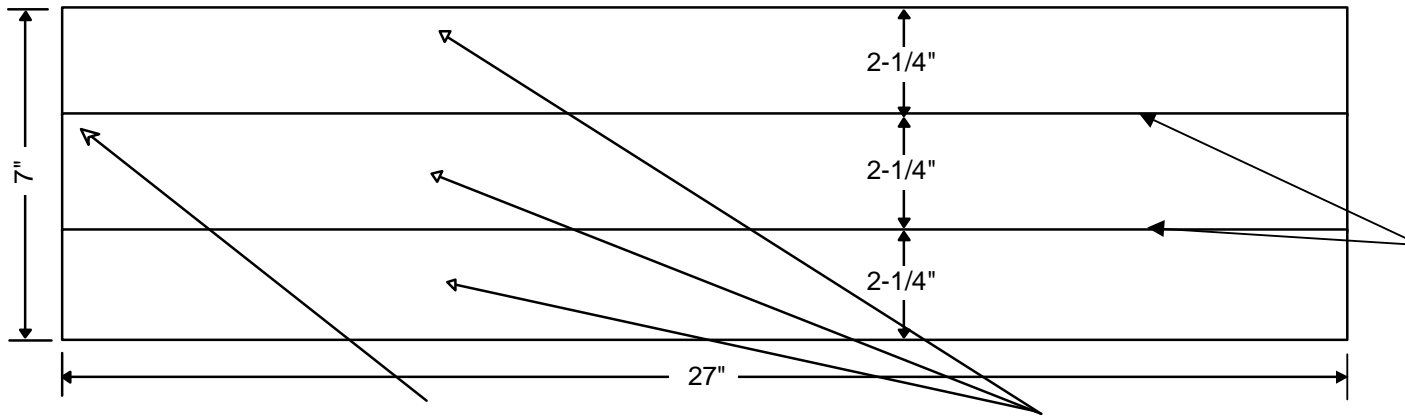


LOCOMOTIVE STORAGE BOX

Proto Power West Storage Box *



Glue 2" folded square of paper in each corner to reinforce corner

Glue a strip of 220 sandpaper in the bottom - prevents sliding (optional)

*Proto Power West
P.O. Box 7916
La Verne, Ca. 91750

Glue 1/8" Door Front Plywood 1 1/2" high (Boxes are very irregular so divide equally)

Tip: Cut a piece of plastic or wood 2 1/4" to use as a gauge to center the plywood strips.



2" folded paper squares to reinforce corner

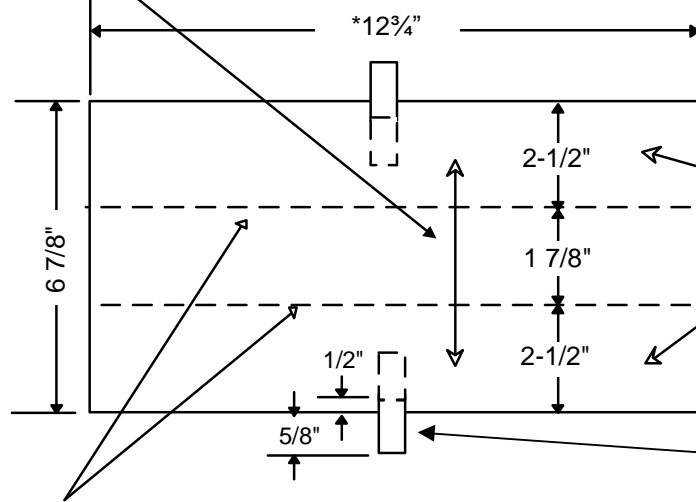
Use a glue bead to glue to the bottom.

Cut plywood end at a slight angle for a better fit.

Cardboard Locomotive Holder

Standard 1/8" Cardboard

Cardboard Grain
Direction



Standard 1/8" Cardboard

Apply 1/4" foam on the inside with 1/4" margin. Proto Power West Storage Box foam strips work well.

5/8" Heavy Ribbon (about 2")
(Cut a slit centered in the cardboard, push the ribbon through the slit & glue tape end to back side. Apply glue to ribbon edge to prevent fraying)

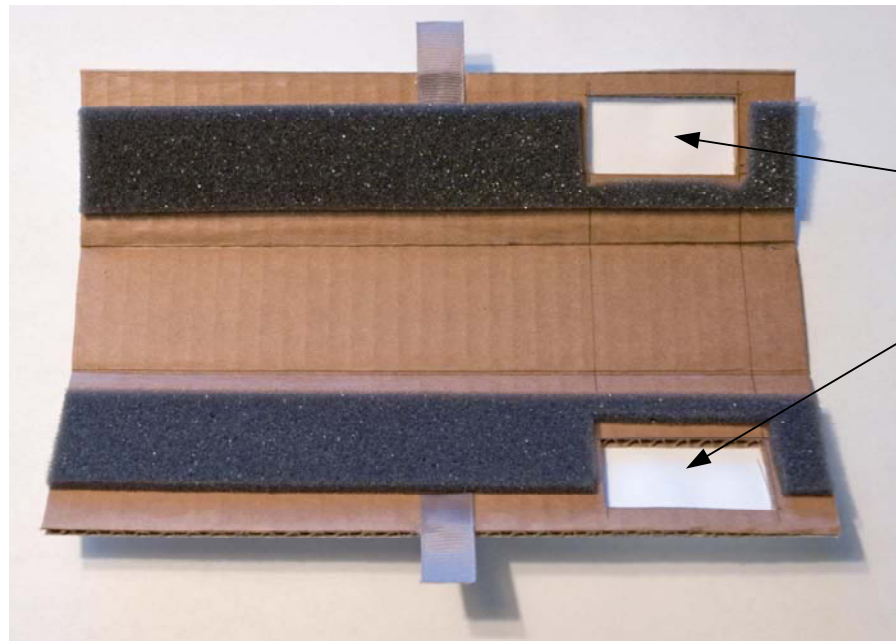
* Length of the holders will vary to fit the Proto Power West Storage Box = 27"

Examples:

- 1 - 17 1/2", 1 - 9 1/4"
- 1 - 15", 1 - 9 1/4"
- 1 - 14", 1 - 12 3/4"
- 2 - 12 3/4"
- 2 - 9 1/4", 1 - 8 1/4"
- 3 - 8 3/4"
- 4 - 6 1/2"

Crease with a screen spline tool & fold

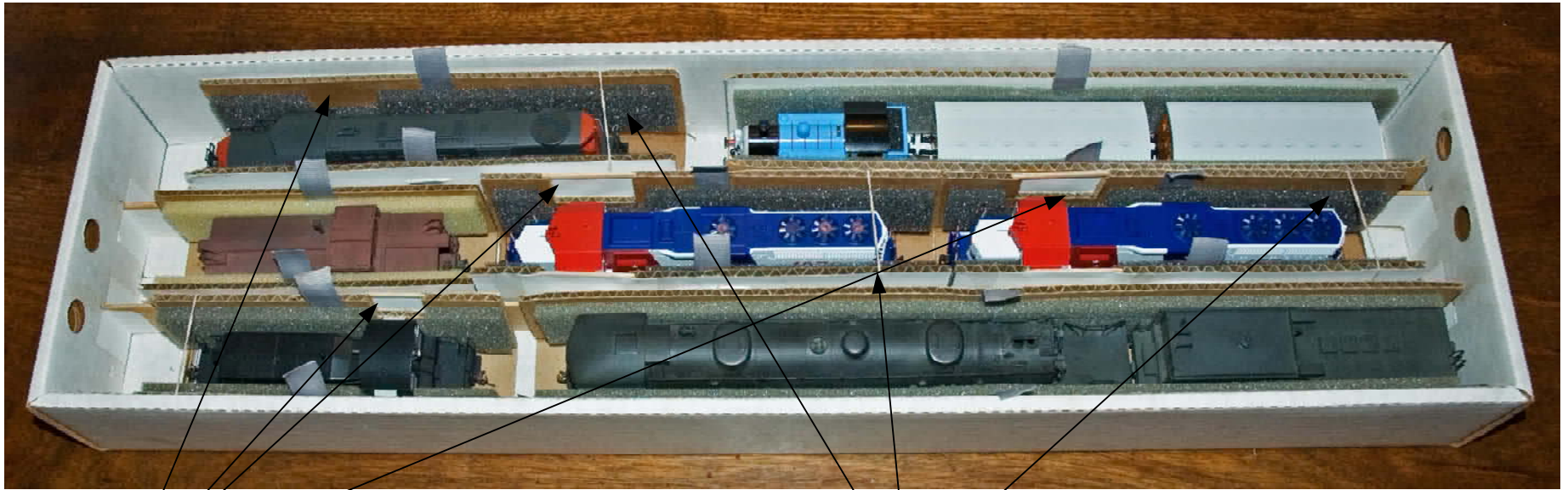
Use #16 (2 1/2" x 1/16") Rubber Bands to hold Model (optional)



Cut holes as need to protect details such as sunshades from being crushed.

Cover the hole on the outside by gluing 90 lbs paper

Completed Storage Box



Holes to protect
sunshades

Rubber bands to keep
locomotive from sliding