

Sierra Central Railroad Operator Training

Sacramento Passenger Yard



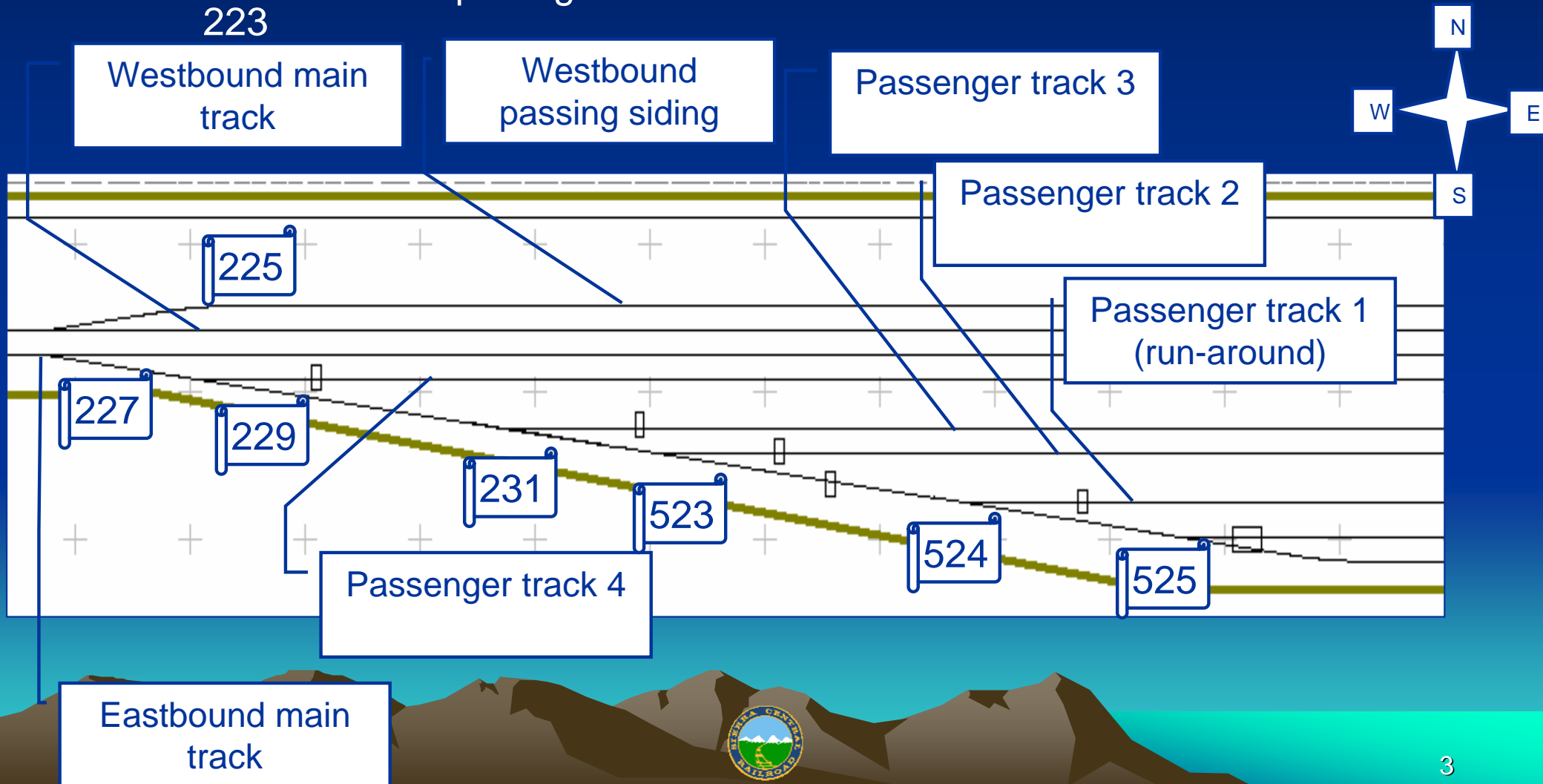
Sacramento Passenger Yard

- Training objectives
 - Show proficiency using yard control panel
 - Show understanding of mainlines versus sidings
 - Identify west and east –bound mains
 - Show understanding of how to arrive/depart trains with regards to Mikon and Sacramento crossovers
 - Show how to log-on a departing train
 - Show how to log-off a terminated train

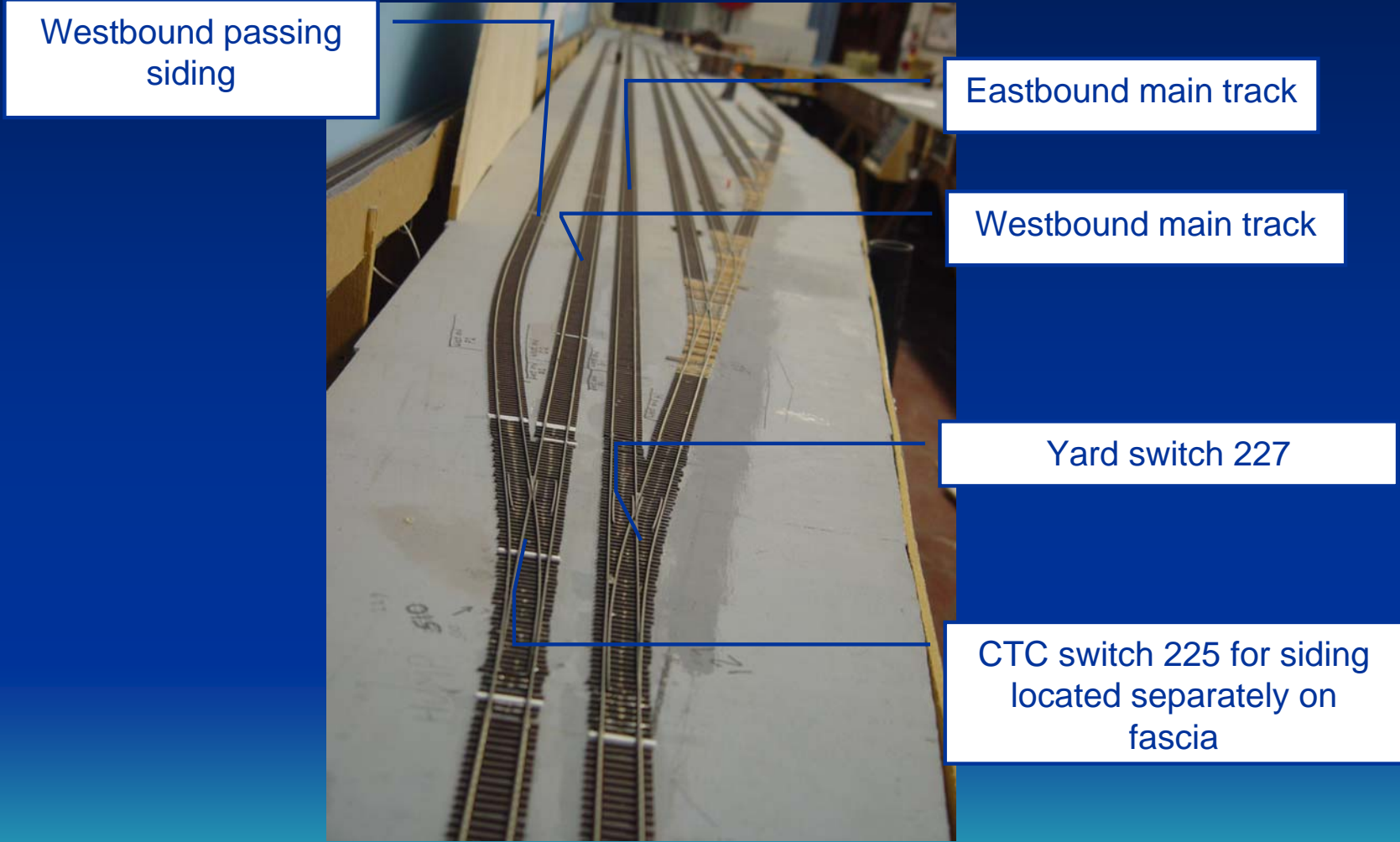


Sacramento Passenger Yard

- West yard limit
 - Switch 227 should be left thrown to main
 - Westbound departing trains will need to take the Mikon crossover switch 223

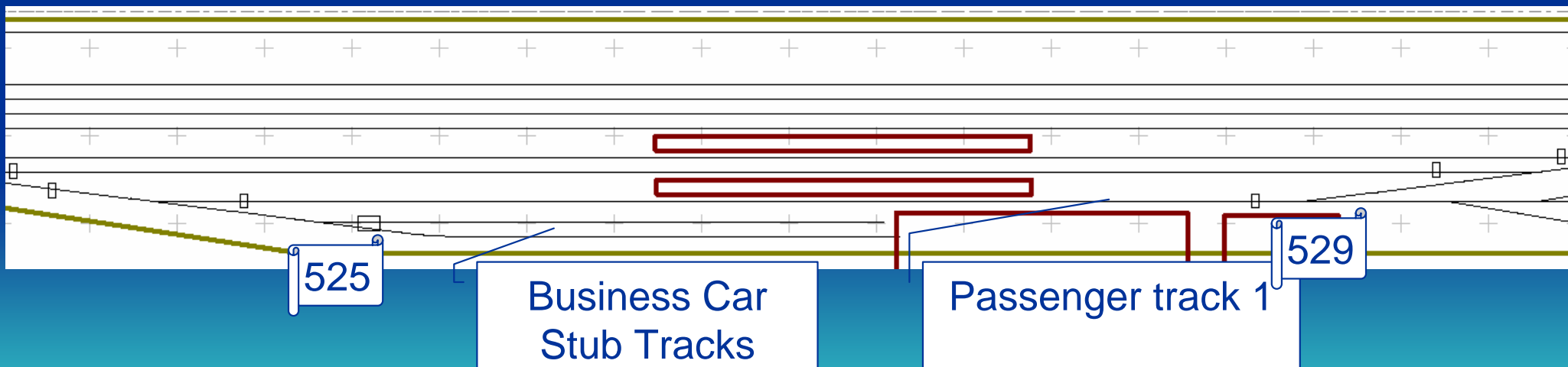


Sacramento Passenger Yard West Approach



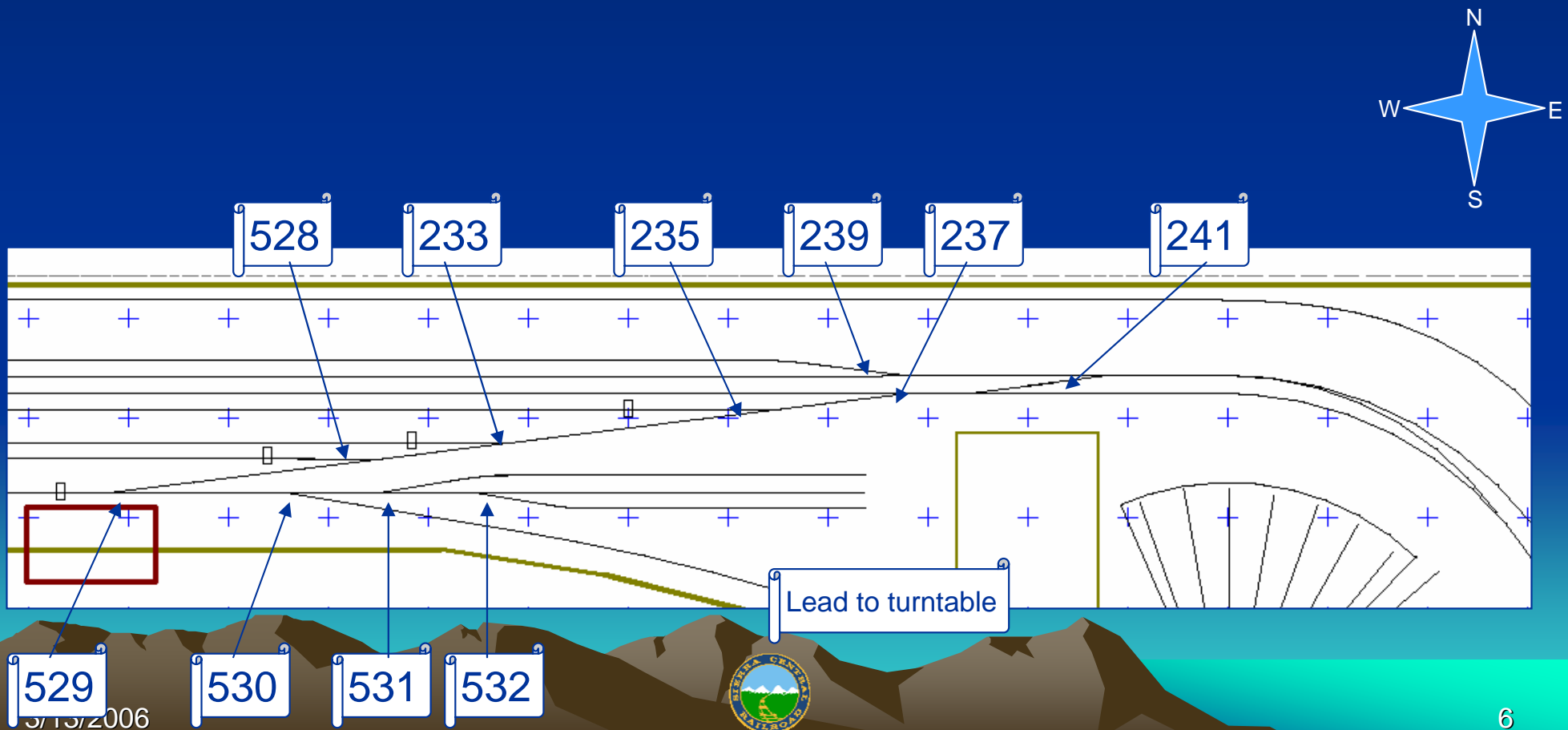
Sacramento Passenger Yard

- Business Car tracks (2), switch 525
- Switch 529 to engine tracks and turntable
- Note: passenger track 1 is normally left open as run-around for engines

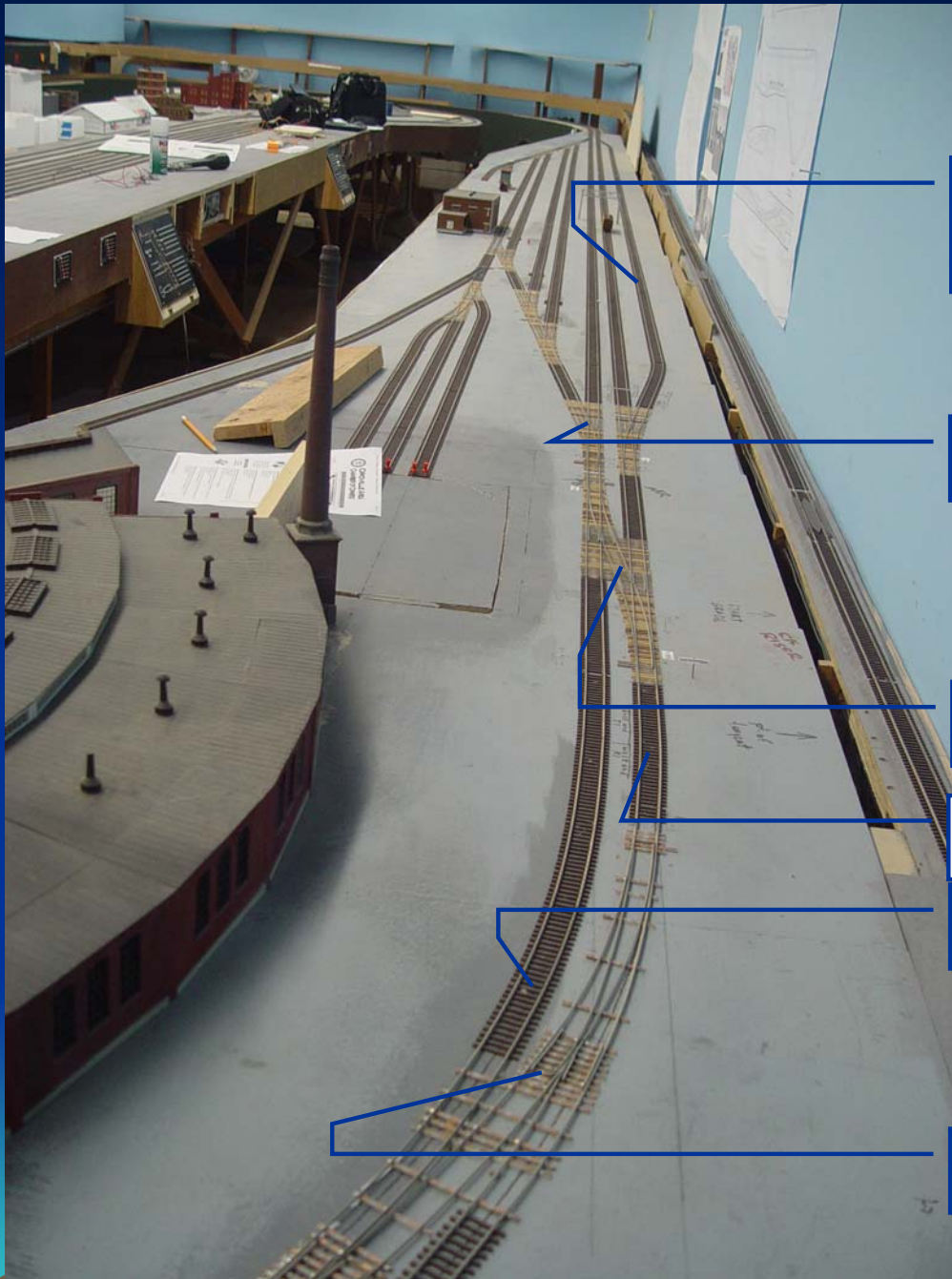


Sacramento Passenger Yard

- East yard limit
 - Switch 237 should be left thrown to main
 - Incoming westbound trains will need to cross over at switch 241



Sacramento Passenger Yard East Approach



Westbound
passing siding

West Yard Limit, Switch 237

Crossover, Switch 241

Westbound Main

Eastbound Main

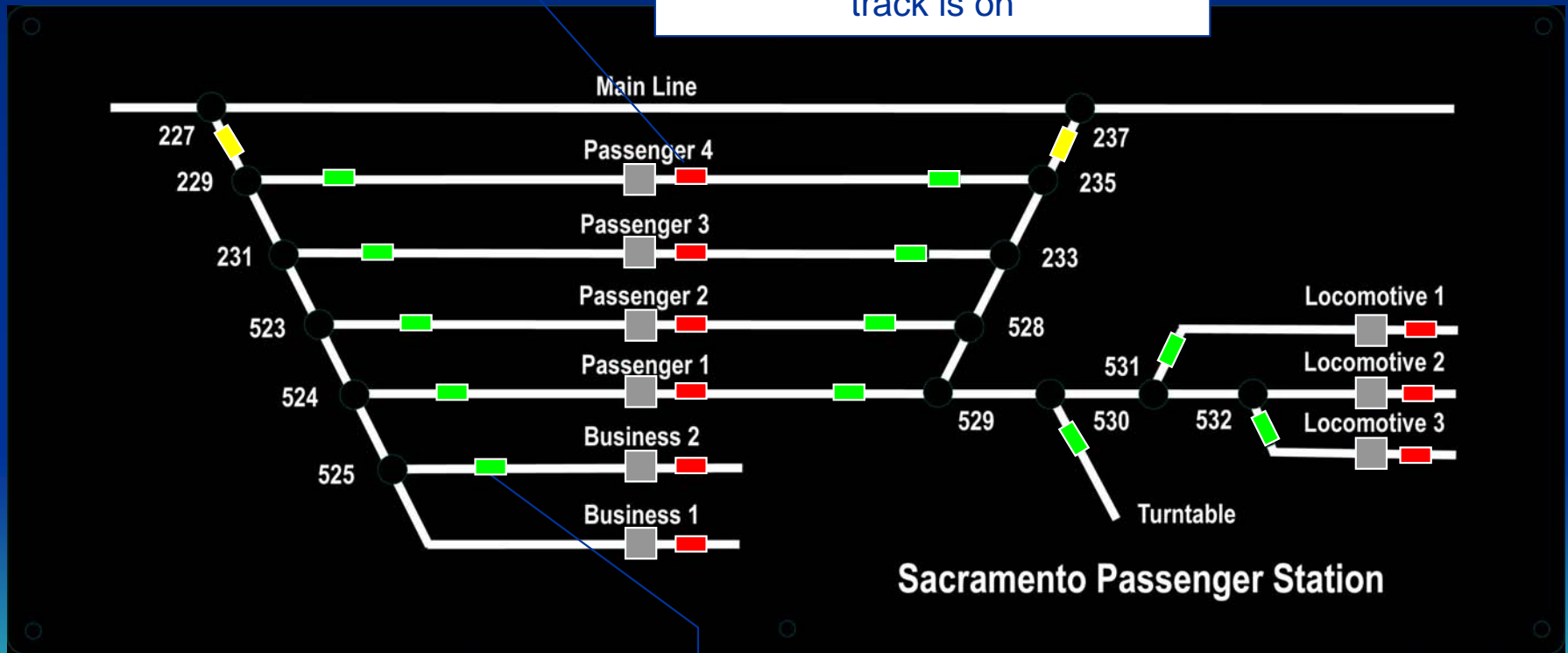
Crossover, Switch 243

Sacramento Passenger Yard



- Yard Control Panel
 - On/Off buttons
 - Switch position LED's

On/Off buttons-if red LED is on, track is on



Switch position LED's highlight diverging route when selected (toggle switches not shown, located at track intersections)

