

Sierra Central Railroad Operator Training

Signals



Basics

- Signals are approach-lit
- Engineer sits on the right side of the locomotive – signals will be right of track centerline
- Multiple targets on one signal
 - Top target = mainline
 - Lower target(s) = diverging routes
 - You need to know the territory and which tracks are mainline and which leg of a switch is the ‘diverging’ route
- Aspect – Indication
 - Red – Stop
 - Yellow – slow, next signal red
 - Green – proceed



Eastbound at West James



Dark signals (approach-lit) – if you are this close you have to assume the signal system is down

Eastbound at West James



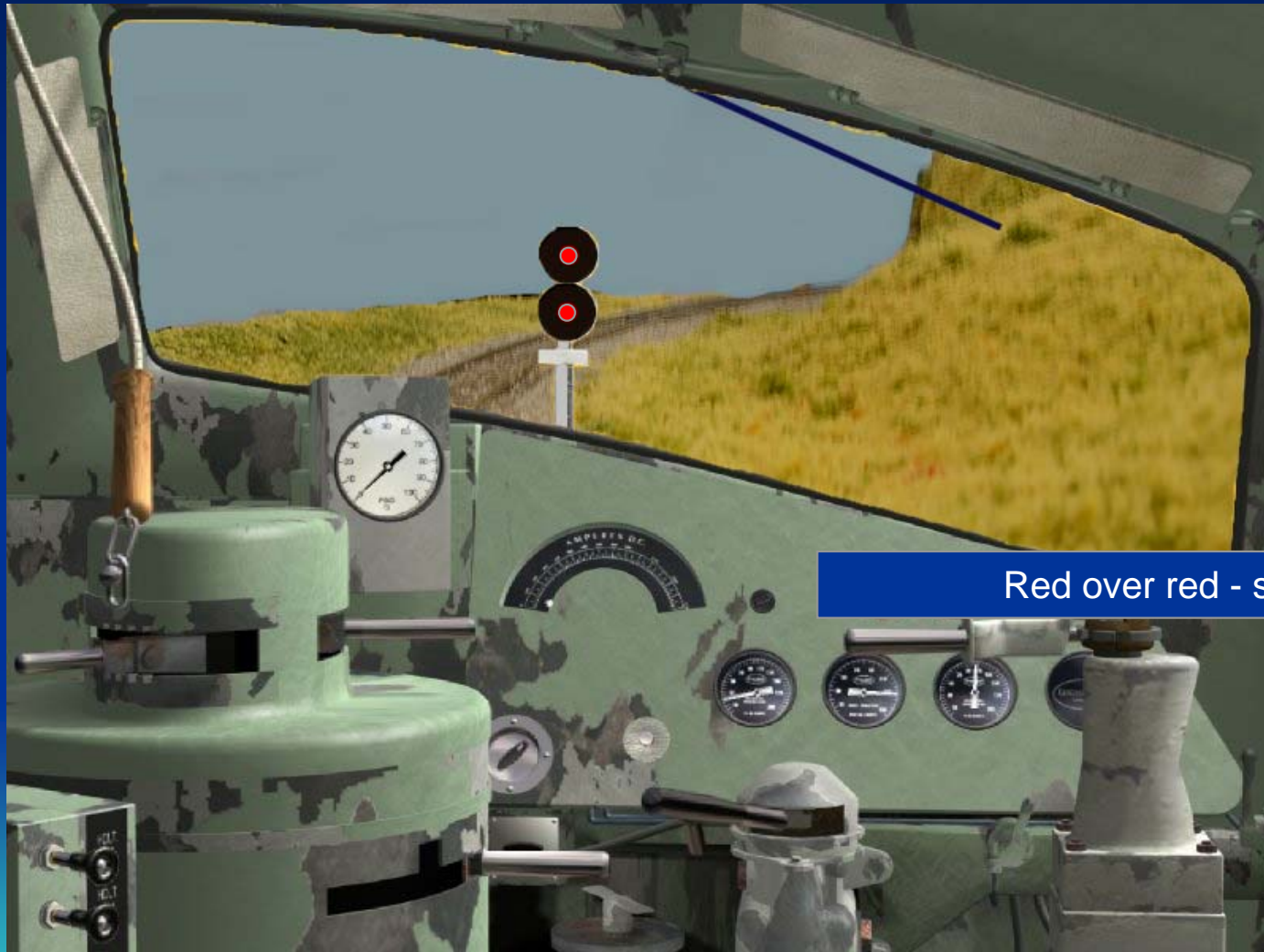
Green over red – take the main with no reduction in speed

Eastbound at West James



Yellow over red – take the main at reduced speed, prepare to stop at the next signal

Eastbound at West James



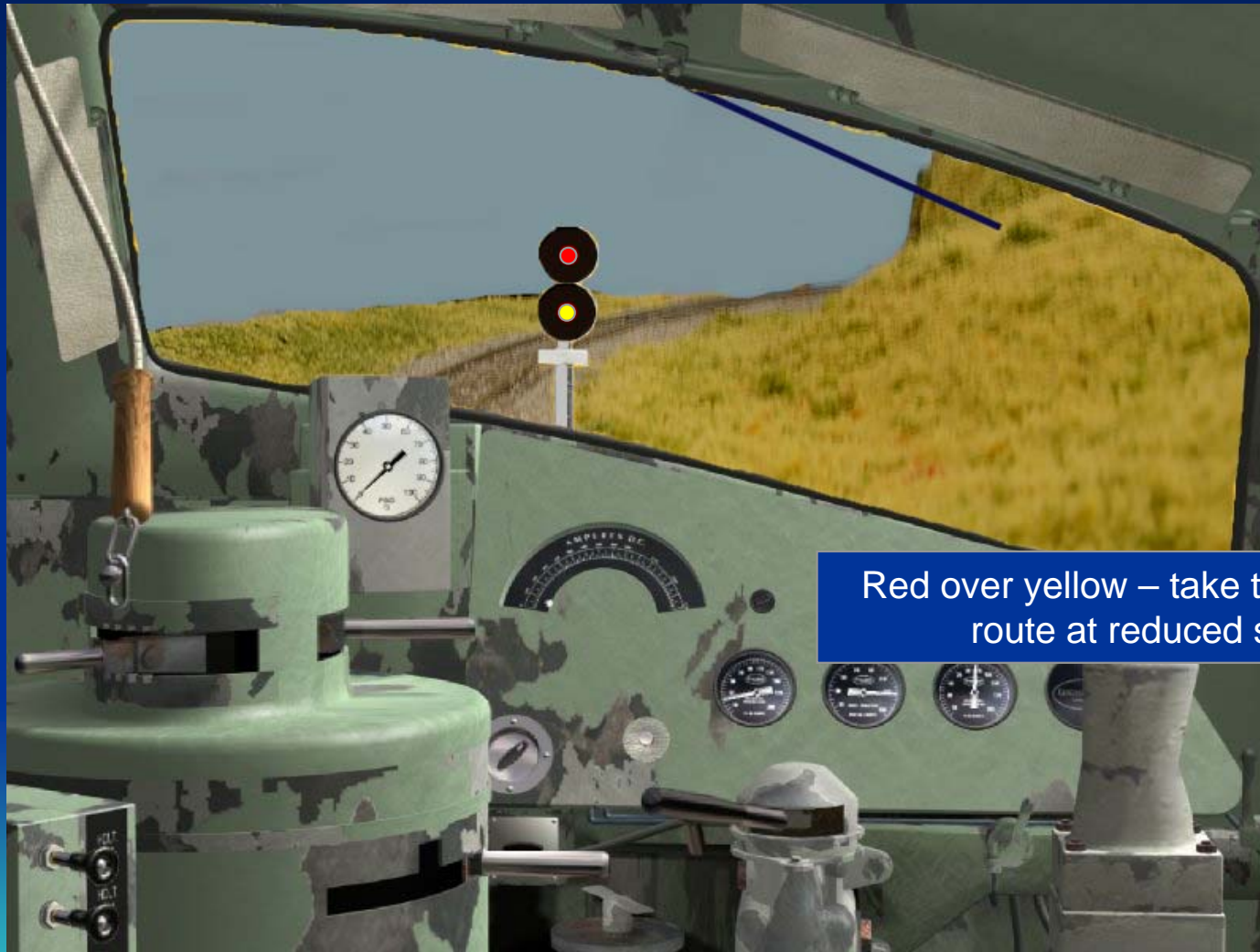
Red over red - stop

Eastbound at West James



Red over green – take the diverging route

Eastbound at West James



Red over yellow – take the diverging route at reduced speed

Westbound at West James



- Left target=left track
- Right target=right track
- Approach-lit

Westbound at West James



- Left target=left track=proceed
- Right target=right track=**stop**

Westbound at West James



- Left target=left track=proceed at reduced speed
- Right target=right track=**stop**

Westbound at West James



- Left target=left track=**stop**
- Right target=right track=proceed

Westbound at West James



- Left target=left track=**stop**
- Right target=right track=proceed at reduced speed