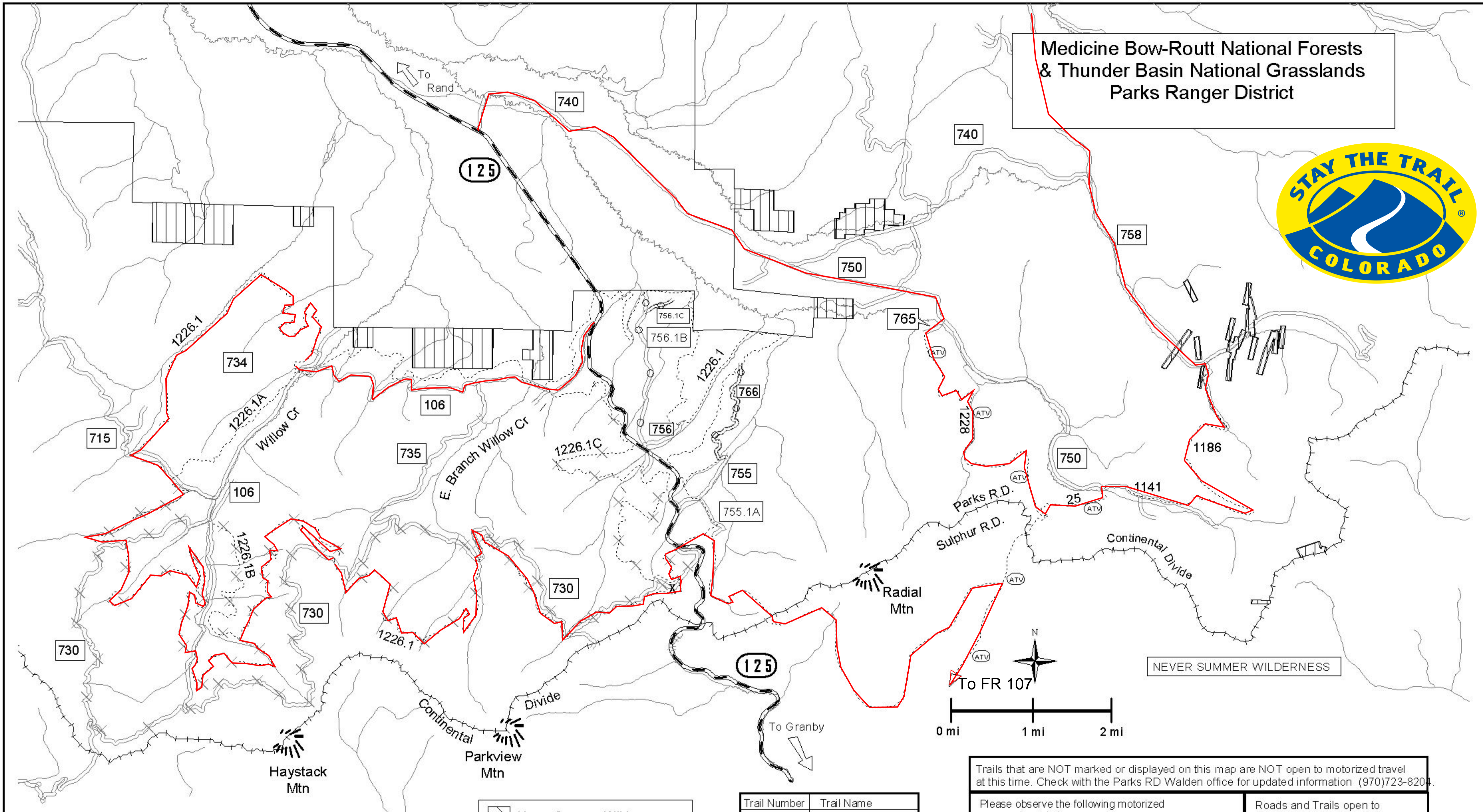


To Gould

Medicine Bow-Routt National Forests
& Thunder Basin National Grasslands
Parks Ranger District



Willow Crk - Snyder Crk Motorized Routes

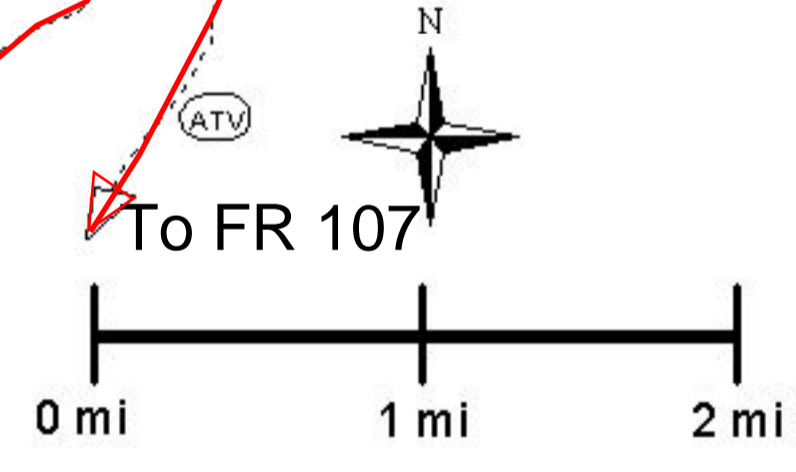
03.31.2005 drobertson

- Never Summer Wilderness
- State Land, Subject to Leasing
- Private Land
- Continental Divide
- Routt National Forest Administrative Boundary

Trail Number	Trail Name
1226.1	Snyder Creek Loop
1226.1A	Sidewinder
1226.1B	Porcupine
1226.1C	Parkview Creek
1228	Illinois Ditch Trail
25	Illinois Pass

Trails that are NOT marked or displayed on this map are NOT open to motorized travel at this time. Check with the Parks RD Walden office for updated information (970)723-8204.

Please observe the following motorized seasonal restrictions:		Roads and Trails open to motorized travel:	
Roads Closed March 15-June 30 to Protect Elk Calving (Rds 756.1B, 756.1C, 766.1)	Trails open to motorcycles	Roads open to motorized use	
Roads Closed to Motorized Use the Tuesday following Labor Day until November 15, EXCEPT for express purpose of removing downed game from 4:00 pm-9:00 pm to provide Big Game security.	Trails Closed to Motorized Use the Tuesday following Labor Day until November 15, EXCEPT for express purpose of removing downed game from 4:00 pm-9:00 pm to provide Big Game security.	Roads open to motorized use	Trails open to ATVs & motorcycles



NEVER SUMMER WILDERNESS