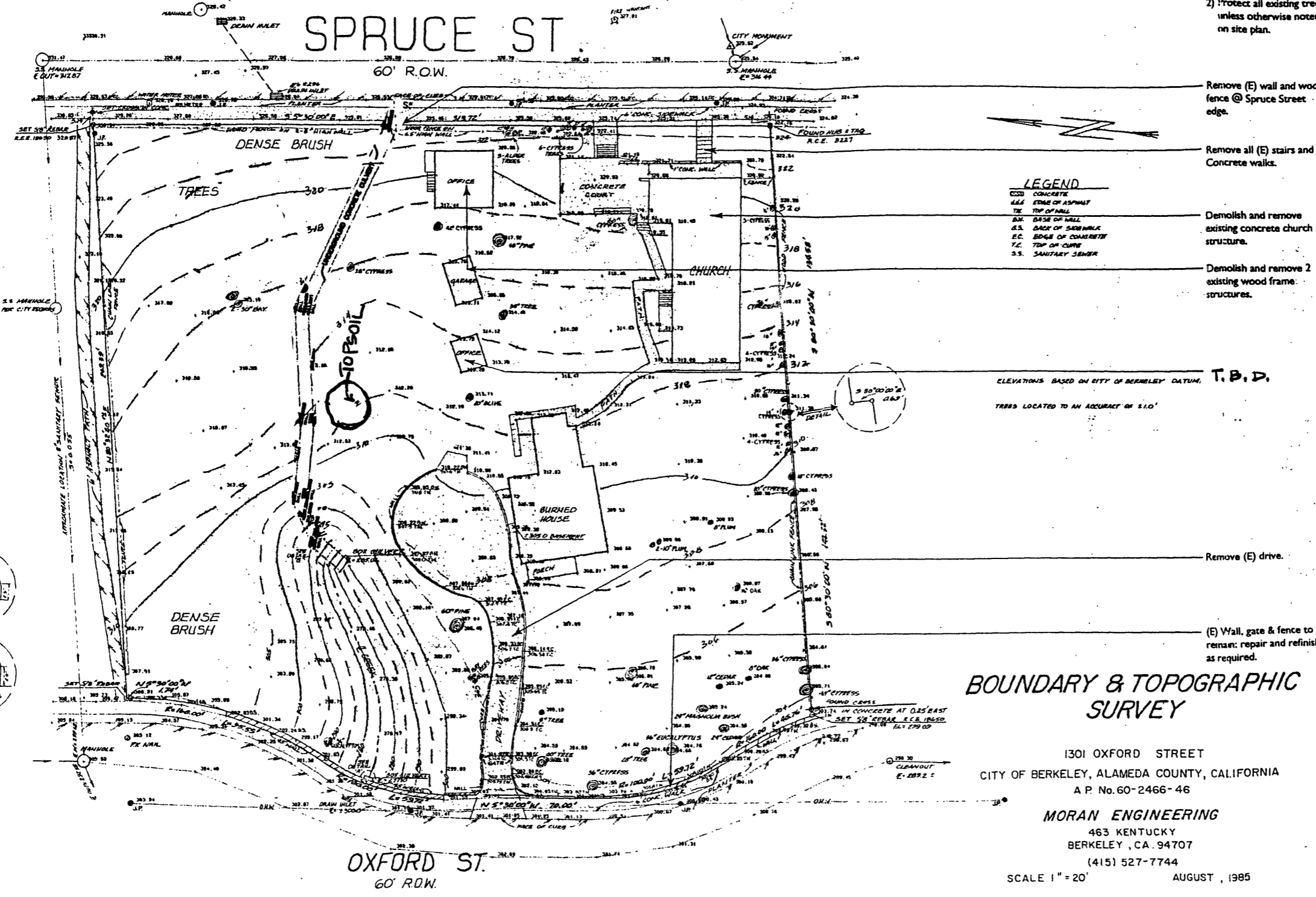


- Note:
- 1) All hazardous materials located on site to be disposed of in accordance with local and State regulations.
  - 2) Protect all existing trees unless otherwise noted on site plan.



Congregation Beth El  
2301 Vine Street  
Berkeley, California  
(510) 848-3988

Architect  
**Moore Ruble Yudell,**  
Architects and Planners  
933 Pico Blvd.  
Santa Monica, California  
(310) 450-1400

Landscape Architect  
**Mia Lehrer + Associates**  
800 North Alameda Street  
Suite 100  
Los Angeles, California  
(213) 892-0009

Drawing Title      Page Numb

TOPOGRAPHIC & DEMO PLAN      **AI.C**

REV 6.13.02

I. TOPOGRAPHIC PLAN (With Demolition Notes)

