

Web Site: <http://mywebpages.comcast.net/lswoodguild/>

Email: [lswoodguild@comcast.net](mailto:lswoodguild@comcast.net)

January 2008

Volume 16, Issue 1

# Lee's Summit Woodworkers' Guild, Inc.

## President's Corner—By Mel Bryan

### NEXT MEETING

Tues, January 8, 2008 7:00pm

**Lee's Summit Christian Church**

800 N.E. Tudor Road  
Lee's Summit, MO 64086

### President

Mel Bryan (816) 524-7767  
[mrsebryan@planetkc.com](mailto:mrsebryan@planetkc.com)

### Vice Pres.

Greg Hull (816) 246-4738  
[ghull2000@yahoo.com](mailto:ghull2000@yahoo.com)

### Treasurer

Linus Goth (816) 966-8114

### Secretary

Bill Akers (816) 524-4237  
[2akers@planetkc.com](mailto:2akers@planetkc.com)

### Board Members

Charles Honeywell  
(816) 478-8332  
[Choneywell1@aol.com](mailto:Choneywell1@aol.com)

Buddy Epperson  
[imbudep0242@sbcglobal.net](mailto:imbudep0242@sbcglobal.net)

Eddie Mynatt (816) 373-4274  
[mynatts@comcast.net](mailto:mynatts@comcast.net)

### Circulation & Membership Chairman

Roy Hackemeyer (816) 524-9416  
[roy@hackemeyer.com](mailto:roy@hackemeyer.com)

### Editor

Kevin Newman (816) 537-5834  
[mknsawdust@comcast.net](mailto:mknsawdust@comcast.net)

In the last President's Corner we looked back over the past year and tried to evaluate a little of what we accomplished and/or learned. Therefore, since we're beginning a new year, I thought I'd keep up with the tradition of a "New Year's message". The thought of a New Year often conjures up deliberations of "New Year's Resolutions", promises of change, steadfastness or some other future resolve. Since I'm not a "resolution" type of guy I don't intend to project empty promises or expectations for this coming new year. However, I foresee an exciting year ahead of us in our guild.

First of all allow me to introduce to you the new officers and members on our board. Your new vice-president is Greg Hull. The three new board members are; Charles Honeywell, Buddy Epperson, and Eddie Mynatt. Returning officers include me, Mel Bryan (president), Bill Akers (secretary), and Linus Goth (treasurer). I'm very much looking forward to working with these guys in the coming year. In fact, we've had our first board meeting and I am encouraged by the willingness

and input these guys present. We tried to get started by looking ahead for activities and direction into the next year. I think we're off to a pretty good start with hopes of field tours, member sharing sessions, the Woodworking Show, some sort of show of our own and one or two member shop tours. We're looking for ways of making ourselves visible out into the community. So, if you have



meeting so I'm sure we will be repeating it and very possibly expanding upon it.

Another thing we are doing is to expand our presence at the Woodworking Show in February. As you know, we plan to request larger space and have members give demonstrations on various aspects of woodworking. To facilitate that activity, the guild is the proud owner of a new portable workbench. We were the recipients of two or three heavy solid core doors and some of us got together and made the bench you see in the photo. It was made following the design and plans of John Freeland and is portable, yet solid. It can be taken apart to transport and the hope is to be able to use this bench for demonstrations in future

*(Continued on page 2)*

ideas or desires for any of these things please feel free to share that with any officer or board member.

One thing that will very probably be done again next year is the December meeting. We had a very good turn out for our social meeting in December in spite of the threatening bad weather. I've had nothing but positive feedback regarding the

### In This Issue:

- Presidents Corner
- Member Profile-Roy Hackemeyer
- A Tribute To Sonnie
- Wood show 2008

### January Program—Segmented Bowls



Bowl by Jay Helland

The program this month is the “Process of Making Segmented Bowls”. It will be presented by Guild member Jay Helland. If you’ve seen segmented bowls and always wondered what was involved and how they were made, this will be a great opportunity to learn. Jay has brought his works to show and tell several times in the past and has agreed to share his process with us. ☺

Greg Hull

### Presidents Corner A Tribute To George “Sonnie” Sharrar-A Friend We Will Miss Continued

(Continued from page 1) shows or activities. Unfortunately, though, it has to be stored offsite from our meeting place so it’s unlikely we will be able to use it for meeting presentations.

To wrap up my message, I think I would venture to say that the thrust of what I’m trying to convey is that the key to our having a good year ahead and subsequently a meaningful guild is; “everyone’s participation”. We’ve had good participation this past year and I’m sure that will continue into the future year.

Keep working that wood and work it safely.

HAPPY NEW YEAR! ☺

Mel Bryan  
President

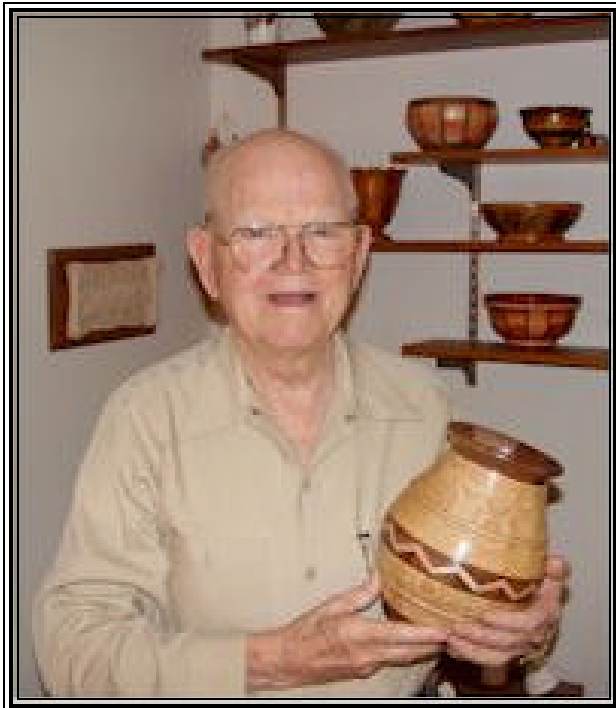
A master craftsman from among us is missing. Missing in physical presence but not in memory or legacy.

George “Sonnie” Sharrar known to most everyone in our guild, and several other guilds in the Kansas City area, passed away December 25, 2007.

Sonnie, as he was known to most of us, is most known in our circle for his magnificent segmented bowls and intricate laminated pieces of artwork in the form of jewelry and components that helped make up many other things.

Sonnie was 93 years old and still turning bowls up to within the last few weeks of his life.

Born in Davenport, Iowa on October 2, 1914 he was a lifetime wood



worker with a very large heart and touched many people.

He so freely gave of his time to teach many of us in his own shop as well as in our meetings.

It was always a treat to see what came out of his “scrap box” and to hear how ‘simple’ it was. He will always be an inspiration for many of us and we are all the richer for his friendship and membership in our guild. ☺

Mel Bryan



Bowl #370

worker with a successful patternmaking business in Moline, Illinois from 1934 to 1980.

Sonnie was an award winning wood turner and had several articles published and was willing to teach and mentor anyone willing to learn what he could pass on to them. It’s difficult to keep this tribute to Sonnie short because as most of you know he was a man



Bowl #429

## Out of the Workshop-Guild Member Profile Of Roy Hackemeyer

This month's member, Roy Hackemeyer, may not need any introduction, but he is certainly one that bears getting better acquainted with. As I'm sure you know, Roy is the person that collects your dues, provides your membership cards, maintains our membership list, and distributes the newsletter and other mailings including our email broadcasts. Needless to say, Roy is very involved and does a tremendous amount of guild work behind the scenes. Roy has performed these functions from the early beginnings of our guild since 1992. He was the first elected president in 1993 and has served in some capacity almost ever since.



Apparently Roy showed an interest in woodworking at a very young age because his father recognized this interest and bought him a scroll saw for Christmas during his 6<sup>th</sup> or 7<sup>th</sup> grade years. This took place in Cincinnati, Ohio where Roy grew up and lived through his high school years. With his new found fascination, he began turning out yard ornaments with dreams of selling them. Those dreams didn't materialize however. Then along came high school. In high school, Roy's attention turned toward electronics in the form of HAM radio, audio and Hi-fi, therefore he took four years of electronics causing his woodworking to take a backseat until the time came to own a house. Electronics became the career path for Roy after getting an Associate Degree in Electronic Engineering from Valparaiso Technical Institute (Valparaiso, Indiana). He then started out as an electrical engineer in Bloomington, Indiana with Sarkes Tarzian, Inc. where they manufactured TV tuners, diodes, and broadcast equipment. He was employed there seven years working in the Broadcast

Equipment division, working on television microwave equipment. Roy's specialty became electronic test set design, partly to simulate field conditions. In 1965 Roy started work for Western Electric in Indianapolis, Indiana and remained there until 1985 when he moved to Lee's Summit because of the closure of the plant in Indianapolis. After working for Western Electric/AT&T/Lucent for 31 years, Roy retired in 1996.

Woodworking was resumed in 1966 when he and his wife got their first house and Roy began furnishing it with the furniture they needed. A visit to their home is an amazing display of an entire house furnished by Roy himself. Roy has made everything in their home with the exception of the upholstered furniture and a couple of end tables, one computer desk, two dressers, one chest of drawers and one credenza. And fine furniture it is, including chairs, tables, entertainment center, end tables, chests of drawers,

desks, and a complete cherry bedroom suite including an armoire. As a matter of fact, Roy can list what he has built by naming rooms, such as, dining room, living room, bedroom and so on. The list doesn't end there either. His sons' houses contain many furniture pieces with one of Roy's favorite and fun pieces, a crib for his grand daughter. Roy's most challenging project was his dinning room table. Not because of the construction, but due to the zebra wood that he used that was not seasoned properly and kept giving squirrely challenges. One of Roy's current 'on-going' projects is the finishing of a bedroom in the basement of his son's house in Atlanta, Georgia to where he commutes fairly often.

Roy's first major power tool was a radial arm saw which was his primary tool for a long time and he still has it and uses it. Although he says he doesn't have a particular favorite tool, the ones he uses the most

would be the table saw and router. Another favorite power tool is his CAD computer program. Roy is pretty much a 'power-tool guy', so thinking of a favorite hand tool was a bit of a challenge. Roy's favorite wood is now cherry which replaced walnut and is followed by red oak and maple. Roy's woodworking skills have been self taught and he credits the guild as one of his best educational avenues. Therefore, he enjoys the exchange of information at our meetings and the 'show & tell' aspect as well as the program presentations. Roy's organization of his project records is impressive. He has a database maintaining each project with information such as; wood, style, joint types, finish, plans, dates and other pertinent data including pictures. To finish a project, he prefers clear finishes, mainly polyurethane wiped on in several coats. Roy's shop is in the basement and was a requirement in the house plan when they purchased the house. It's a medium sized shop set up pretty much the way he likes it.

Roy's advice to beginning woodworkers would be; find a mentor, read and study even magazines and to "soak it all up". Roy himself is willing to mentor anyone in the area of furniture making.

Thanks, Roy, for letting us get to know you a little better and keep up the good work!

©

Mel Bryan



# Woodworking Show 2008



Yes, believe it or not, the 2008 wood show is quickly approaching. The Kansas City wood working show, is scheduled for the first weekend in February. This gives us just one more meetings before the wood show.

The woodworking show is the ultimate woodworking event of the year featuring more products, exhibitors, free demonstrations and the latest inventions.

The show will be held at the

same location as last year, The Overland Park International Trade Center at 6800 W. 115th street. Brochures will be available at the January meeting.



Volunteers will be needed to man the Woodworkers' Guild booth again this year. This is a great way to meet other people interested in learning more about woodworking as well as share some of your knowledge of the art. You also get free admission to the show.

A signup sheet will be available at the January guild meeting for



individuals interested in volunteering. It's not necessary to volunteer for an entire day. A few hours here or there would be greatly appreciated. It's recommended you bring some of the items you have made to put on display while you're at the booth.

More information will be available at the next guild meeting. ☺



## Metro Hardwoods, Open For Biz



For those of you that have been waiting and wanting to know:

As of November 5, 2007

Metro Hardwoods is open for business.

Hours: 9:30AM to 6:30PM Monday thru Friday and Saturday hours are 9:00AM to 4:00PM.

Lees Summit Woodworker's Guild members will receive 10% off their purchase

(show your membership card). Discount excludes General Power Tools.

Location: 4452 S. Noland Road, Independence, MO. (1/2 mile south of I-70 across the parking lot from Harbor Freight)

Store Manager, Jeff Edemann is looking forward to seeing all of you. Jeff can be reached at:

816-373-1710

Email Address:

jedemann@libertyhardwood sinc.com ☺

## Secretaries Notes For November 13, 2007



### Secretaries Notes

President Mel Bryan called the meeting to order at 7:00 p.m. General statements made by the President were:

#### GUILD DUES -

For the year 2008 dues will be \$15.00 and are being collected starting this month.

**TOY PROJECT** -Support our raffle as this is our way of giving back to the community through the donation we make to the "TOYS FOR TOTS" program. Thanks to those that are supporting this project.

**SHOP TOURS** – The past shop tours were enjoyed by all and a special THANK YOU to those members that volunteered their shops. The Lee's Summit area shop tours will be planned for early 2008.

**COMPUTER CLASSES** – These turned out to be a welcome venture for those that attended as RICK was able to give a jump start for those looking to the future use of a CAD program. .

**OFFICERS 2008** – The officers for the 2008 year will be and were approved by the GUILD members: Mel Bryan – President; Greg Hull Vice President; Linus Goth – Treasurer; Bill Akers - Secretary; Charlie Honeywell, Buddy Epperson and Eddie Mynatt – Board Members.

**SPECIAL THANKS** – Give Earl Reed a call and thank him for his generous donations (816-246-4747).

**MEETING NOTICES** – During bad weather tune to CHANNEL 41 for any cancellation of the GUILD meeting.

**OFFICERS** – Looks like vacancies are being filled. Please help to maintain our presence in the community by becoming a concerned member and nominate yourself for one of these rewarding positions.

**METRO HARDWOODS,INC** – Look for opening in Independence in November.

**GUEST/VISITORS** - Welcome and please sign the registry (this gets you a copy of the newsletter for the next two months). Attendance was 73.

#### SHOW AND TELL—

1. Arlie reamer displayed a CHIPENDALE MIRROR.

2. Dave Nolan had an interesting GOLF PENCIL DISPLAY BOARD (great golfing or he knows where the pencils are dropped).
3. Bob Pressly had a finished FLAG DISPLAY CASE.
4. Mike Shaw had a BOBBIN WINDER, a WARPING BOARD and a QUILT HANGER.

**PROGRAM**—Vice President Neil introduced another of our great volunteer members who came forward to give us another of his fine "HOW TO DO IT KEVINS' WAY". Kevin Newman will give us all those things that are missing in the owners manual when you just purchased your first DOVE TAIL FIXTURE and tried to put it through its paces. Past knowledge tells me that you can always use the help of an expert when all else fails (NO!! I read the instructions). We thank Kevin once again, for taking time to share his knowledge and giving us some lessons he has learned in his quest to become a better wood worker. Don't forget to help our Vice President. Don't forget to help our Vice President Neil Winquist by keeping a lookout for anything that would be of interest to our members.

**COOKIES:** Thanks to the guild for providing the cookies.

**NEXT MEETING**—January 8, 2008.

President Mel Bryan closed the meeting at 9:00 p.m.

Respectfully Submitted,  
Bill Akers ©

## Sonnies Showcase



Bowl #14



Bowl #165



Bowl #337



Bowl #261



Bowl #296



Bowl #258

#### Guild Member Discounts

Paxton 10% on all items.  
(816) 483-0659

#### Skates

10% on products and 20%  
on books. (816)  
421-4158

Merit Industries - 15 to 25%  
on all items.

Woodline Arizona or  
www.woodline.com—10%  
off. (800) 472-6950

Klingspor—10% off non-  
powered items.  
(800) 645-5555

#### Woodcraft Supply

10% off-Excludes all power  
tools. Must show membership  
card.

#### Woodsmith Store

10% off, Excludes all power  
tools. Buyer must show guild  
membership card. (800) 835-  
5084

#### Valuemax Tools

10% off Catalog Prices  
www.bluerouterbits.com or  
Call (800) 782-8083

#### Hartville Tool

20% off 1st year.  
15% off subsequent years

#### Metro Hardwoods

10% Off. Must show card.  
(816) 373-1710

LEE'S SUMMIT  
WOODWORKERS' GUILD,  
INC.

1611 NE Oak Tree Dr.  
Lee's Summit, MO 64086

### Mission Statement

The Lee's Summit Woodworkers' Guild will strive to promote the exchange of woodworking information and further the craft.

#### WE'RE ON THE WEB

Web Site:  
<http://mywebpages.comcast.net/lsguild/>

## Dues for 2008



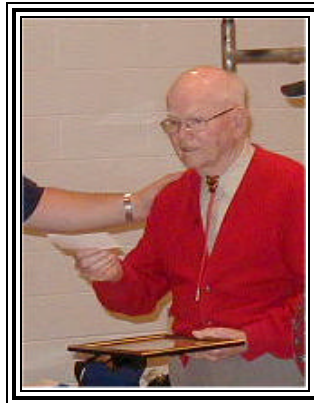
Dues for 2008 are now being accepted. Your annual dues help keep the guild strong and healthy. It's a small price to pay to for such a tremendous source of knowledge.

An envelope for payment was enclosed with your November newsletter. Please use this envelope to mail your dues payment or enclose your payment in the envelope and bring it to the next meeting.

Roy will give you a new membership card when you pay your dues at the meeting. By paying your 2008 dues as soon as possible, Roy will be able to include you when he publishes the 2008 membership roster in March or April.

Be sure and let Roy know if your email or home address has changed since last year. ©

## Sonnie Sharrar Memorial Service



A memorial service for Sonnie will be held at 4:00 p.m., with a visitation to follow on Saturday, January 5, 2008 at the Groves Chapel, 1515 W. White Oak, Independence, MO. The chapel is located on the south side of White Oak. St.

Contributions may be made to Outreach International or the Groves Hospice. Online condolences may be left at:

[www.speakschapel.com](http://www.speakschapel.com).

Contributions may be made by mail to:

Groves Hospice  
1515 W. White Oak  
Independence, MO 64050  
816-254-3500

Outreach International  
P O B o x 2 1 0  
Independence, MO 64051  
816-833-0883

or online at:  
[www.outreach-international.org](http://www.outreach-international.org)  
©

## Raffle

For January, we have two nice prizes to choose from. The first prize is a Bessey 10 piece Clamp Set. This clamp set retails for \$90.00. A special thanks to Charlie Wilson at Woodcraft this generous donation.

The second nice prize is a DeWalt heavy duty jig saw kit with a contractors carrying bag model number DW317N.

Features:

- Keyless blade clamp for fast, easy blade installation and removal
- 5.5 Amp motor deliver



powerful cuts in the hardest materials

- Variable speed delivers 0 - 3,100 strokes per minute for optimal cutting speed
- 4-position orbital action allows for faster, more aggressive cuts in a variety of materials
- All-metal gear case provides superior durability on a professional site
- Shoe bevels 0° to 45° for beveled cuts

Raffle tickets can be purchased at the meeting for \$2.00 each or 3 for \$5.00.

All proceeds will be used to benefit our charity fund and the Toys for Tots program. ©

## New Members

Congratulations and welcome to these first time new members of the Lee's Summit Woodworker's guild. We're glad to have you aboard. ©

Welcome Aboard!

Brian Southard  
Peculiar, Mo