

Roda-Bites™

MOUSE, RAT & HAMSTER DIET COMPLETE

GUARANTEED ANALYSIS

Crude Protein, not less than (NLT)	21.0%
Crude Fat, not less than	6.0%
Crude Fiber, not more than (NMT)	7.0%
Calcium, not less than	0.8%
Calcium, not more than	1.3%
Phosphorus, not less than	0.7%
Sodium, not more than	0.3%
Lysine, not less than	1.1%
Methionine & Cystine, NLT	0.75%
Vitamin A, not less than	4000 IU/LB
Vitamin D, not less than	800 IU/LB
Vitamin E, not less than	50 IU/LB
Metabolizable Energy, NLT	1250 KCAL/LB

INGREDIENTS

Dehulled Soybean Meal, Wheat Millrun, Rice Bran, Ground Wheat, Ground Lima Beans, Suncured Alfalfa Meal, Calcium Carbonate, Flax Seed, Cane Molasses, Animal Fat, Condensed Lignosulfonate, Salt, DL-Methionine, Vitamin E Supplement, Yeast Culture, Mold Inhibitor (Propionic Acid, Acetic Acid, Sorbic Acid, Benzoic Acid, Ammonium Hydroxide), Direct-Fed Microbials (Heat-Stable cultures of Lactobacillus acidophilus, L. casei, Bifido bacterium thermophilum, Enterococcus faecium and Aspergillus oryzae), Yucca Schidigera Whole Plant Powder, Zinc Methionine Complex, L-Lysine Hydrochloride, Selenium Yeast, Natural & Artificial Flavoring, Naturally Preserved with Mixed Tocopherols, Rosemary Extract, Ascorbic Acid & Citric Acid, Vitamin A Supplement, Vitamin D3 Supplement, Choline Chloride, Menadione Sodium Bisulfite, Calcium Pantothenate, Folic Acid, Riboflavin Supplement, Niacin Supplement, Thiamine Hydrochloride, Pyridoxine Hydrochloride, D-Biotin, Vitamin B-12 Supplement, Manganese Sulfate, Zinc Sulfate, Ferrous Sulfate Monohydrate, Copper Chloride, Ethylene Diamine Dihydroiodide, Sodium Selenite.



**LOCKED
FORMULA**

Dr. Cheeke's YQ+™ For Gut and Respiratory Health

GUARANTEED ANALYSIS

Crude Protein, not less than	15.0%
Crude Fat, not less than	12.0%
Crude Fiber, not more than	11.0%
Calcium, not less than	0.7%
Calcium, not more than	1.1%
Phosphorus, not less than	0.8%
Sodium, not more than	0.3%
Lysine, not less than	0.7%
Methionine & Cystine, NLT	0.5%
Copper-Lysine, NLT	17 PPM
Zinc-Methionine, NLT	50 PPM
Added Selenium, NLT	0.28 PPM
Vitamin A, NLT	2700 IU/LB
Vitamin D, NLT	400 IU/LB
Vitamin E, NLT	270 IU/LB
Vitamin C, NLT	70 IU/LB
Digestible Energy, NLT	1380 KCAL/LB

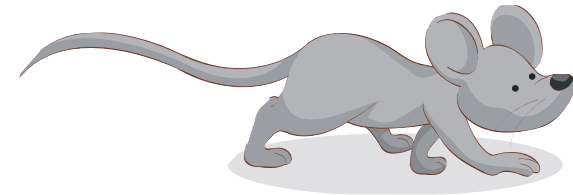
INGREDIENTS

Rice Bran, Dehulled Soybean Meal, Ground Wheat, Suncured Alfalfa Meal, Almond Hull Meal, Flax Seed, Refined Menhaden Fish Oil, Calcium Carbonate, Refined Soy Lecithin, Quillaja Saponaria Powder, Yucca Schidigera Whole Plant Powder, Salt, Yeast Culture, Mannan Oligosaccharides (derived from Brewers Dried Yeast and Dried Saccharomyces cerevisiae Fermentation Solubles), Vitamin E Supplement, d,l Methionine, Thyme Leaf Powder, Turmeric Root Powder, Hydrolyzed Yeast, Hydrated Calcium-Sodium Aluminosilicate, Direct-Fed Microorganisms (Dried Lactobacillus acidophilus, Lactobacillus casei, Bifidobacterium bifidum, Enterococcus faecium and Aspergillus oryzae fermentation products), Zinc Methionine Complex, Copper Lysine Complex, Manganese Methionine Complex, Cobalt Glucoheptonate, Natural & Artificial Flavoring, L-Ascorbyl 2-Poly-phosphate (stabilized Vitamin C), Cayenne Powder, Selenium Yeast, Garlic Extract, Anise Extract, Chinese Cassia Bark Extract, Ginger Extract, Horseradish, Juniper Extract, Naturally Preserved with Mixed Tocopherols, Rosemary Extract, Ascorbic Acid & Citric Acid, Vitamin A Supplement, Vitamin D3 Supplement, Choline Chloride, Niacin Supplement, Calcium Pantothenate, Menadione Sodium Bisulfite, Riboflavin Supplement, Thiamine Hydrochloride, Pyridoxine Hydrochloride, D-Biotin, Folic Acid, Vitamin B-12 Supplement, Zinc Oxide, Manganous Oxide, Ferrous Sulfate, Tribasic Copper Chloride, Ethylene Diamine Dihydroiodide, Cobalt Sulfate, Sodium Selenite.

Feed between 1/8 to 1/2 ounce per animal. Mix with their regular food or feed in a separate bowl to individual animals.



Roda-Bites™ Food for Hamsters, Mice and Rats



Manufactured by

L.A. HEARNE COMPANY

King City, CA 93930 (800) 253-7346

www.king-brand.com

Feeding Directions

Feed as the sole ration to growing/breeding rats, mice, and hamsters on a free-choice basis. For maintenance needs, restrict intake to prevent obesity.

Store **RodaBite** pellets in a cool, dry area. Never feed moldy or insect-infested feeds.

Nutrient Profile for Roda-Bites

Nutrient Name	Units	Actual
Dry Matter	Percent	90.5
Crude Protein	Percent	22.5
Crude Fat	Percent	6.8
Crude Fiber	Percent	5.9
Ash	Percent	8.3
Calcium	Percent	1.1
Phosphorus	Percent	0.8
Phos-AV	Percent	0.22
Magnesium	Percent	0.34
Potassium	Percent	1.38
Sodium	Percent	0.11
Sulfur	Percent	0.26
Copper	PPM	17.22
Iodine	PPM	0.95
Manganese	PPM	112.0
Zinc	PPM	147.0
Arginine	Percent	1.54
Histidine	Percent	0.59
Isoleucine	Percent	1.09
Lysine-Total	Percent	1.25
Methionine	Percent	0.57
Threonine	Percent	0.84
Tryptophan	Percent	0.29
Valine	Percent	1.21
Methionine/Cystine	Percent	0.85
Metabolizable Energy	Kcal/Lb	1185.0
Added Selenium	MG/KG	0.3
Vitamin A	KIU/KG	8.36
Vitamin D	KIU/KG	1.51
Vitamin E	IU/KG	133.71
Biotin	MG/KG	0.2
Choline	MG/KG	1814.0
Folacin	MG/KG	2.7

Nutrient Profile for Roda-Bites (cont)

Niacin Available	MG/KG	95.4
Pantothenic Acid	MG/KG	24.65
Riboflavin	MG/KG	6.32
Thiamine	MG/KG	11.77
Pyridoxine	MG/KG	8.7
Vitamin B12	MG/KG	0.01
Menadione	MG/KG	2.58
Zinc-Methionine	PPM	20.0
Chloride	PCT	0.23
Linoleic Acid	Percent	2.17
Xanthophylls	MG/KG	3.56

Dr. Cheeke's YQ+™ Supplement

Dr. Cheeke's YQ+™ is a unique animal health supplement. It is a special blend of two desert plants: Yucca schidigera and Quillaja saponaria. It also contains refined lecithin (a superior emulsifier), heat-stable, beneficial live micro-organisms (yeast and bacteria), the feeding attractants/digestion enhancers of turmeric, thyme and cayenne pepper plus omega-3 fatty acids and natural anti-oxidants. Dr. Cheeke's YQ+ may:

- Improve Health and longevity
- Aid in digestion and maintenance of gut function
- Improve respiratory health
- Reduce stillbirths and mortality of newborns
- Control environmental ammonia odors
- Enhance the immune system at all ages

WHEN TO USE DR. CHEEKE'S YQ+

Dr. Cheeke's YQ+ is particularly useful during the periods before, during, and after stress. Animals near to giving birth, being moved to new environments, and exposed to stress of any type benefit from this product. Because of its high palatability plus its appetite stimulatory properties, it is especially effective in getting sick animals back on feed. It is also useful in overcoming rejection of medicinal agents added to the feed. Customer comments about Dr. Cheeke's YQ+ often mention that it makes apathetic animals act invigorated. Some people feed Dr. Cheeke's YQ+ daily, especially to older animals.

The palatability of Dr. Cheeke's YQ+ is superb. It is perfect for transitioning from one product to another: helping avoid digestive disturbances often associated with dietary changes.

Dr. Cheeke's YQ+ was developed by Dr. Peter Cheeke and Dr. John Throckmorton. Dr. Cheeke is Professor Emeritus at Oregon State University and Science Advisor to Desert King International, the world's largest supplier of both yucca and quillaja saponaria. Dr. Throckmorton is Director of Nutrition at L. A. Hearne Company and has a wealth of "real-world" experience with many different animal species. Additional information at:

www.king-brand.com



KING Feed's Formulation Director is Dr. John Throckmorton. John received his undergrad degree from U. C. Davis and Oregon State. He received his M.S. in Animal Nutrition at Oregon State under Peter Cheeke. The University of New England, New South Wales, Australia is where Dr. Throckmorton was awarded his Ph. D. in Animal Nutrition.



The L. A. Hearne Company has been manufacturing high quality animal foods since 1938. This family-owned business does private-label manufacturing for several exceptionally demanding companies that address very specific markets where precise animal nutrition is paramount. Under its own labels, "King™" (sold exclusively in California, and "Integrifeed™" (sold in states other than California), L. A. Hearne offers a complete and fully extended line of companion-animal products for horses, rabbits, sheep, goats, chinchillas, caviars, poultry and rodents. **Roda-Bites** has been sold under that label for several years but other products have also been manufactured for many years for the laboratory rodent market.

Roda-Bites is a fixed-formula product. Our ingredient percentages remain the same resulting in a consistent color, aroma, flavor, and taste. This is possible by careful screening of our suppliers and running routine analyses on the ingredients we purchase. Formula changes are only made when there is a possibility for improvement in the health and longevity of the animals we are feeding.

Roda-Bites contains heat-stable, live bacteria for gut health and contains whole plant yucca, (not extract) which aids in the reduction of ammonia odors. Improving the air quality of the animal's environment will have a direct, positive impact on health.