



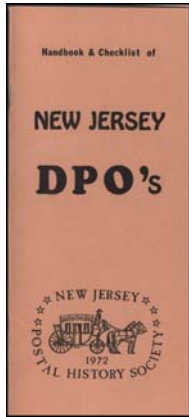
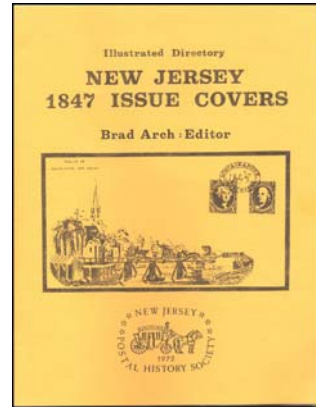
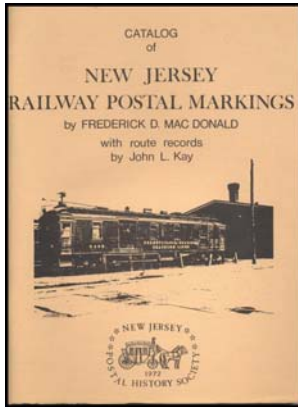
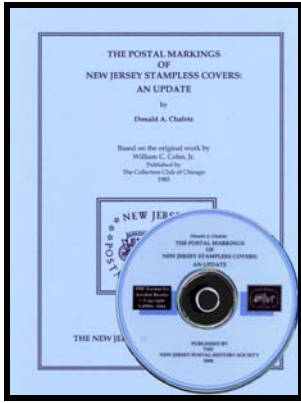
## What is THE NEW JERSEY POSTAL HISTORY SOCIETY, and why should you join?

THE NEW JERSEY POSTAL HISTORY SOCIETY was established in 1972, to study and explore the many aspects of New Jersey postal history. The society produces a quarterly journal which publishes articles on a variety of subjects relating to this theme – and opens a door to other collectors with similar interests.

### Membership benefits include:

- Gold medal journal four times a year, B&W hardcopy, by mail
- Each issue available to download in PDF format, in color
  - Typical issue is 50-60 pages, full of illustrations and articles of interest on all areas of New Jersey postal history, from colonial to modern
  - Visit our website at <http://home.comcast.net/~njpostalhistory/phsindex.htm> where you can view a sample issue of our journal online, and go to NJPHS Journal on that page, or go directly to <http://home.comcast.net/~njpostalhistory/njphjrls.htm> to see the Tables of Contents of journals for the last seven years
- Member discounts on publications (See attached list – if you are interested in any of these, this alone might make membership worthwhile)
  - 5 hardcopy documents at low prices
  - Several CDs at discounted prices to members
  - 8 downloadable files free to members only, including 2 county histories and other items of postal interest to both collectors of NJ and US – more being added regularly
  - Back issues of the journal on CD – 2003-2007 at special prices
  - Older issues available in hardcopy on request, depending on availability
- We meet annually at NOJEX in Secaucus, NJ – Memorial Day weekend – which allows members to meet and discuss topics of common interest
- Any member may submit articles to the journal relating to New Jersey postal history of any era
- Our auctions provide an outlet for any material you no longer want or need, in an area that draws specialized collectors
- Two free adlets per year give you the opportunity to advertise directly to other members

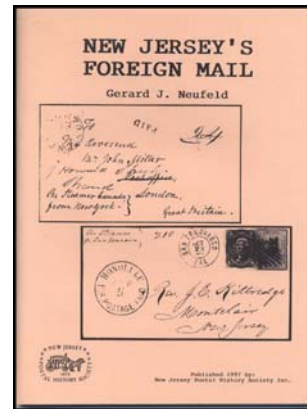
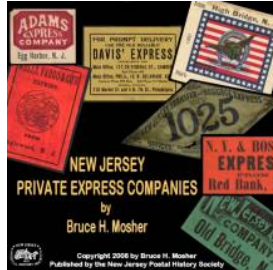
**THE NEW JERSEY POSTAL HISTORY SOCIETY LITERATURE  
 AVAILABLE FOR IMMEDIATE DELIVERY, Post paid, send check to: NJPHS. c/o Jean  
 Walton, 125 Turtleback Rd., Califon, NJ 07830. [PayPal](https://www.paypal.com) payment available – email  
[NJPostalhistory@aol.com](mailto:NJPostalhistory@aol.com) with wants for Paypal invoice.**



**Yearly NJPH issues  
on CD**



**Other CDs of special interest**



|   | <b>Member price</b> | <b>Non-members</b> |
|---|---------------------|--------------------|
| <p><b>CD or hard copy:</b> <i>The Postal Markings Of New Jersey Stampless Covers: An Update</i> by Donald A. Chafetz hardcopy, 28pp. or available as CD in Acrobat Reader [.PDF] format (2004) .....</p> <p>Updates the extensive work of William C. Coles, with new markings and dates since that original work was published in 1983</p>  | <p>\$10.00</p>      | <p>\$15.00</p>     |
| <p><b>CD only:</b> <i>Washington Organ Manufacturers</i> on CD, by Len Frank - 3 articles + many many illustrations not in <i>NJPH</i>, in Acrobat Reader [.PDF] format.....</p> <ul style="list-style-type: none"> <li>• A series of 3 articles on the advertising covers and history of the organ manufacturers of Washington, NJ,</li> <li>• Adds a picture gallery of many covers not illustrated in those articles.</li> <li>• Includes much paper ephemera as well. An astounding compilation of material.</li> </ul> | <p>\$7.50</p>       | <p>\$10.00</p>     |
| <p><b>Hard copy:</b> <i>Catalog of New Jersey Railway Postal Markings</i>, 1984, Frederick D. MacDonald, 136pp. ....</p> <ul style="list-style-type: none"> <li>• Still the “bible” of New Jersey railway postmarks.</li> <li>• A must for any RPO collector.</li> <li>• Routes and cancels shown.</li> <li>• Terminal markings</li> <li>• Alphabetical index</li> </ul>  | <p>\$7.50</p>       | <p>\$10.00</p>     |

|  |             |             |
|--|-------------|-------------|
| <p><b>Hard copy:</b> <i>Illustrated Directory of New Jersey 1847 Issue Covers</i>, Brad Arch, ed., 1987, 44pp &amp; Supplements .....</p> <ul style="list-style-type: none"> <li>• For the collector of the 1847 Issue, this book by Brad Arch is the comprehensive work on New Jersey covers</li> <li>• 5¢ and 10¢ covers in separate sections</li> <li>• Detailed descriptions of each cover, arranged by office of origin.</li> </ul> | \$4.00      | \$7.50      |
| <p><b>Hard copy:</b> <i>New Jersey DPO's</i>, Brad Arch, ed., 1981, 22pp, pocket sized Checklist of Discontinued Post Offices .....</p> <p>THE pocket manual of New Jersey discontinued post offices, easy to transport and an excellent checklist</p> <p><b>Also available to members free as a download xls file</b></p>   | \$3.00      | \$4.00      |
| <p><b>Hard copy:</b> <i>New Jersey's Foreign Mail</i>, 1997, Gerard J. Neufeld, 76pp.....</p> <ul style="list-style-type: none"> <li>• A fine monograph on foreign mail to and from New Jersey in the 19<sup>th</sup> Century</li> <li>• Profusely illustrated</li> <li>• Each cover explained</li> </ul>  | \$8.00      | \$10.00     |
| <p><b>CD:</b> Mosher's NJ Private Express Companies .....</p> <ul style="list-style-type: none"> <li>• 10 compiled articles by Bruce Mosher on many aspects of private express mail in New Jersey</li> <li>• Many color illustrations</li> <li>• Previously unpublished material in lengthy postscript</li> <li>• Alphabetical index</li> </ul>  | \$10.00     | \$15.00     |
| <p><b>CDs:</b> Back issues of the NJPH Journal are available on CD for 2003 to 2006, at</p> <ul style="list-style-type: none"> <li>• These CDs each include the 4 quarterly journals for one year, in pdf format Easily navigable</li> <li>• Many color illustrations</li> </ul> <p><b>CD:</b> 2007 <i>NJPH</i> Issues on CD in Acrobat reader [.PDF] format, with many color illustrations .....</p>                                    | \$5.00 each | \$7.50 each |
| <p><b>Members only:</b> 2 back issue CDs, \$8.00, 3 back issue CDs \$12.00, 4 back issue CDs \$15.00, all 5 CDs \$18</p> <p><b>Non-members:</b> 2 back issue CDs, \$12.00, 3 back issue CDs \$15.00, 4 back issue CDs \$18.00, all 5 CDs \$22</p>  | \$5.00      | \$12.00     |
| <p><b>Literature purchases may be made with Paypal – email us your choices, and we will send you a Paypal invoice.</b></p>   |             |             |
| <p><b>FREE DOWNLOADABLE FILES AVAILABLE TO MEMBERS!</b></p>  |             |             |
| Brad Arch's handy DPO book available in Excel format (also available in hardcopy for \$3 to members, \$4 to non-members)   | <b>FREE</b> | 2.95        |
| Stampless Era Post Offices, based on Coles and the Coles Update available in Excel format.   | <b>FREE</b> | 2.95        |
| New Brunswick's Postal Markings by Robert G. Rose, in PDF - a "digital reprint" in Acrobat Reader format of Bob's articles in the May and August 2005 <i>NJPH</i> and February 2006 <i>NJPH</i> issues.  | <b>FREE</b> | 2.95        |
| Edge, Jack, <i>Post Towns of Burlington County</i> . All of Jack's Burlington series, as published in the pages of <i>NJPH</i> , compiled into one document, in PDF format.  | <b>FREE</b> | 7.99        |
| Edge, Jack, <i>Postmasters of Burlington County</i> . Lists postmasters for all the Burlington communities listed in Jack's Burlington series, also in PDF format.   | <b>FREE</b> | 4.99        |
| Law, Mary E., <i>The Postal History of Cape May County, NJ</i> including postmaster list, published in the pages of <i>NJPH</i> between March 1993 through May 1994, PDF format.   | <b>FREE</b> | 8.99        |
| <i>An Act to establish the Post Office and Post Roads, Feb. 20. 1792</i> , in its entirety.  | <b>FREE</b> | 2.95        |
| Siskin, Ed, <i>Colonial Rate Charts</i> , in Excel format, plus jpgs of those available for 1710, 1754, 1763, 1765, and 1775.  | <b>FREE</b> | 2.95        |
| <p><i>New ones added regularly</i></p>   |             |             |

Ordering information: Enter quantity and amount, and send a copy with check to NJPHS to Jean Walton, 125 Turtleback Road, Califon, NJ 07830, or email [NJPostalHistory@aol.com](mailto:NJPostalHistory@aol.com) for a PayPal invoice.

| ORDER FORM  |   | Quantity | Member | Non-member   |  |
|---|---|----------|--------|--------------|--|
| Membership 2008 – 1 year  |   |          | 15.00  | 15.00        |  |
| <b>Discounted with Mosher CD purchase!</b><br>[If this item is checked, please enter member prices for literature purchased]  |   |          |        | <b>10.00</b> |  |
| <i>The Postal Markings Of New Jersey Stampless Covers: An Update</i> by Donald A. Chafetz, 28 pp  | <input type="checkbox"/> CD or<br><input type="checkbox"/> hardcopy?<br>(check one) |          | 10.00  | 15.00        |  |
| <i>Washington Organ Manufacturers</i> on CD, by Len Frank   | CD  |          | 7.50   | 10.00        |  |
| <i>Catalog of New Jersey Railway Postal Markings</i> , 1984, Frederick D. MacDonald, 136pp  | Hardcopy  |          | 7.50   | 10.00        |  |
| <i>Illustrated Directory of New Jersey 1847 Issue Covers</i> , Brad Arch, ed., 1987, 44pp & Supplements   | Hardcopy  |          | 4.00   | 7.50         |  |
| <i>New Jersey DPO's</i> , Brad Arch, ed., 1981, 22pp, pocket sized Checklist of Discontinued Post Offices   | Hardcopy  |          | 3.00   | 5.00         |  |
| Mosher's <i>NJ Private Express Cos.</i> on CD   | CD  |          | 10.00  | 15.00        |  |
| Back issues of the NJPH Journal are available on CD for 2003-2006   | CDs   |          |        |              |  |
|   | 2003  |          | 5.00   | 7.50         |  |
|   | 2004  |          | 5.00   | 7.50         |  |
|   | 2005  |          | 5.00   | 7.50         |  |
|   | 2006  |          | 5.00   | 7.50         |  |
|   | 2007  |          | 5.00   | 12.00        |  |
| <b>Members only:</b> 2 back issue CDs, \$8.00, 3 back issue CDs \$12.00, 4 back issue CDs \$15.00, all 5 CDs \$18   |   |          |        |              |  |
| <b>Non-members:</b> 2 back issue CDs, \$12.00, 3 back issue CDs \$15.00, 4 back issue CDs \$18.00, all 5 CDs \$22   |   |          |        |              |  |
| <b>Files below are downloadable only, and free to members</b>   |   |          |        |              |  |
| Brad Arch's handy DPO book available in Excel format (also available in hardcopy for \$3 to members, \$4 to non-members)  |   |          |        | 2.95         |  |
| Stampless Era Post Offices, based on Coles & Coles Update available in xls format.  |   |          |        | 2.95         |  |
| New Brunswick's Postal Markings by Robert G. Rose, in PDF - a "digital reprint" in Acrobat Reader format of Bob's articles in the May and August 2005 <i>NJPH</i> and February 2006 <i>NJPH</i> issues. |   |          |        | 2.95         |  |
| Edge, Jack, <i>Post Towns of Burlington County</i> . All of Jack's Burlington series, as published in the pages of <i>NJPH</i> , compiled into one document, in PDF format.                             |   |          |        | 7.99         |  |
| Edge, Jack, <i>Postmasters of Burlington County</i> . Lists postmasters for all the Burlington communities listed in Jack's Burlington series, also in PDF format.                                      |   |          |        | 4.99         |  |
| Law, Mary E., <i>The Postal History of Cape May County, NJ</i> including postmaster list, published in the pages of <i>NJPH</i> between March 1993 through May 1994, PDF format.                        |   |          |        | 8.99         |  |
| <i>An Act to establish the Post Office and Post Roads, Feb. 20. 1792</i> , in its entirety.   |   |          |        | 2.95         |  |
| Siskin, Ed, <i>Colonial Rate Charts</i> , in Excel format, plus jpgs of those available for 1710, 1754, 1763, 1765, and 1775.   |   |          |        | 2.95         |  |
| <b>Total</b>  |   |          |        |              |  |



# New Jersey Postal History Society

## Membership Application

Date: \_\_\_\_\_

Name: \_\_\_\_\_

Mailing Address: \_\_\_\_\_

Telephone#: (\_\_\_\_) \_\_\_\_\_ Fax: (\_\_\_\_) \_\_\_\_\_

Email address: \_\_\_\_\_

New Jersey Collecting Interests (Be as specific as you can as far as time periods, areas, topics or other specializations)

\_\_\_\_\_

\_\_\_\_\_

Philatelic Society Affiliations APS # \_\_\_\_\_

Other societies: \_\_\_\_\_

Do you want your address published in our Membership Directory? Yes \_\_\_\_\_ No \_\_\_\_\_

May we publish your email address? Yes \_\_\_\_\_ No \_\_\_\_\_ May we use it to send you reminders? Yes \_\_\_\_\_ No \_\_\_\_\_

Signature \_\_\_\_\_ New Member \_\_\_\_\_ Renewal \_\_\_\_\_

### Fee Schedule - Annual Calendar Year Membership Dues

|   |                                  |                |
|---|----------------------------------|----------------|
| United States mailing address   | via 1 <sup>st</sup> class mail   | <b>\$15.00</b> |
| Foreign countries - choose either<br>(Payment must be made in US<br>currency) | Printed Matter Surface Mail rate | <b>\$20.00</b> |
|   | Air Mail Printed Matter rate     | <b>\$30.00</b> |

Submission of a properly completed application with appropriate dues made payable in United States currency, to the New Jersey Postal History Society Inc. for the current calendar year entitles you to receive all issues in the current volume of the Journal, which may include back issues.

**Mail to: Jean Walton, NJPHS Secretary**  
**125 Turtleback Road**  
**Califon, NJ 07830-3511**

Members are permitted two free adlets a year in the NJPH. Submit yours in 25 words or less [contact information is not included in 25 word limit - it is free]. Or submit a business card for us to reproduce. WebB 2/08