

5.13.2 "B" Satellite Track On The Earth

The satellite track on the Earth with the continental boundaries may be obtained with this option. The initial data-entry screen as well as the final picture are shown in the following figure. Due to its (almost) infinite possibilities, some projection angles may result in numerical overflow due to the PC-specific arithmetics. This limitation will be eliminated in the future release of the code. The satellite track may be made thicker by the "Track Sym Ht" variable in the data-entry screen; the current symbol for the satellite is "X"; any symbol is allowed. Once on the "Enter Projection Option", ITAS will pop another screen for Latitude (POLAT)/Longitude (POLONG) definitions; enter values for these two only and keep the rest as default values, as shown on the screen.

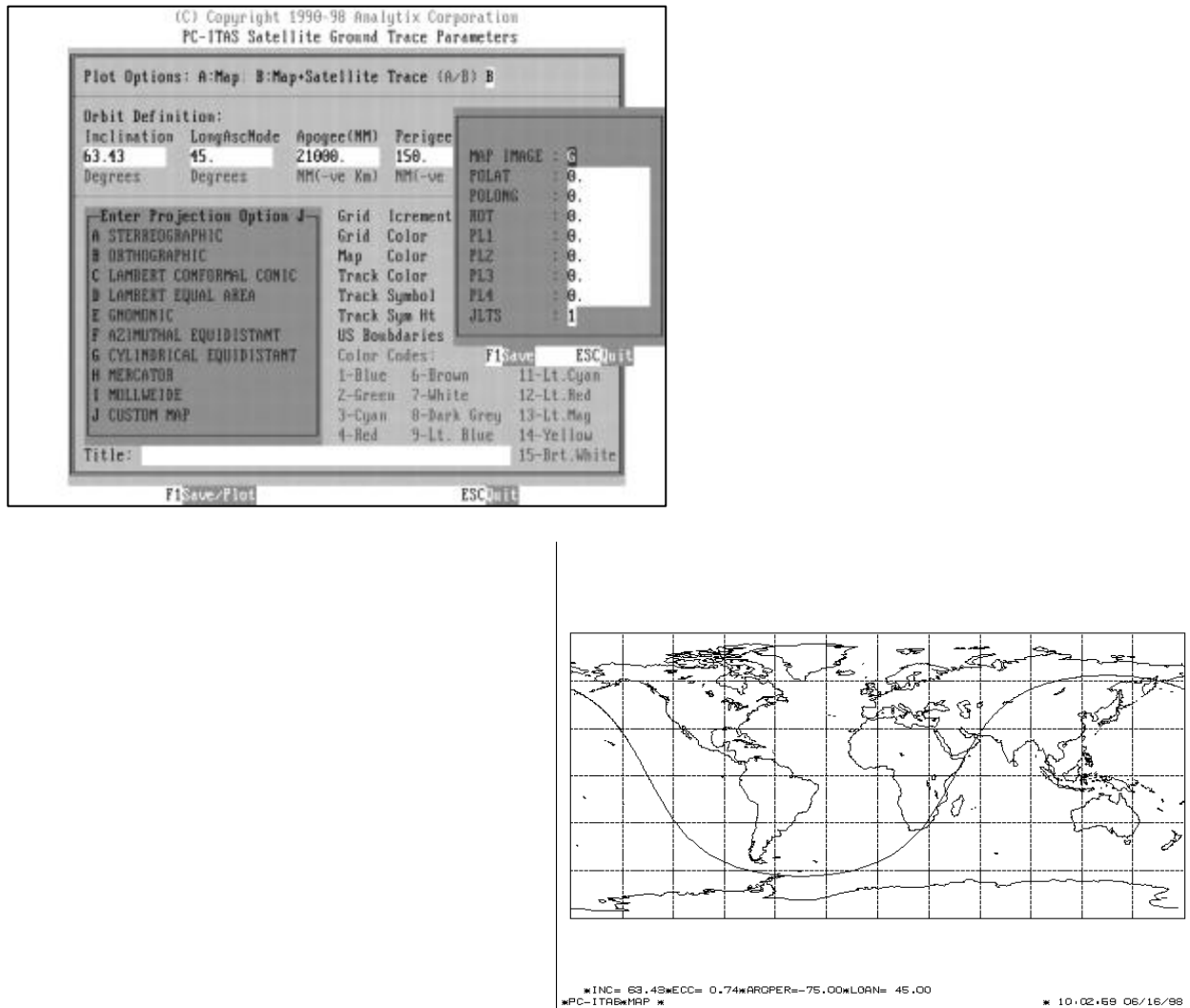


Figure 5-132. PC-ITAS/plus Satellite Track on the Earth with Continental Boundaries