

Note 1:
Structural Insulated Panels
by Premier Building Systems.
9.25" core with 7/16" thick
plywood sheathing on both sides.
Each panel joined at edges with
1.5" x 5.5" #2 Fir or better.
R=38. See sheet S-7 for
installation details. Website:
www.premier-industries.com/pbs/default.aspx

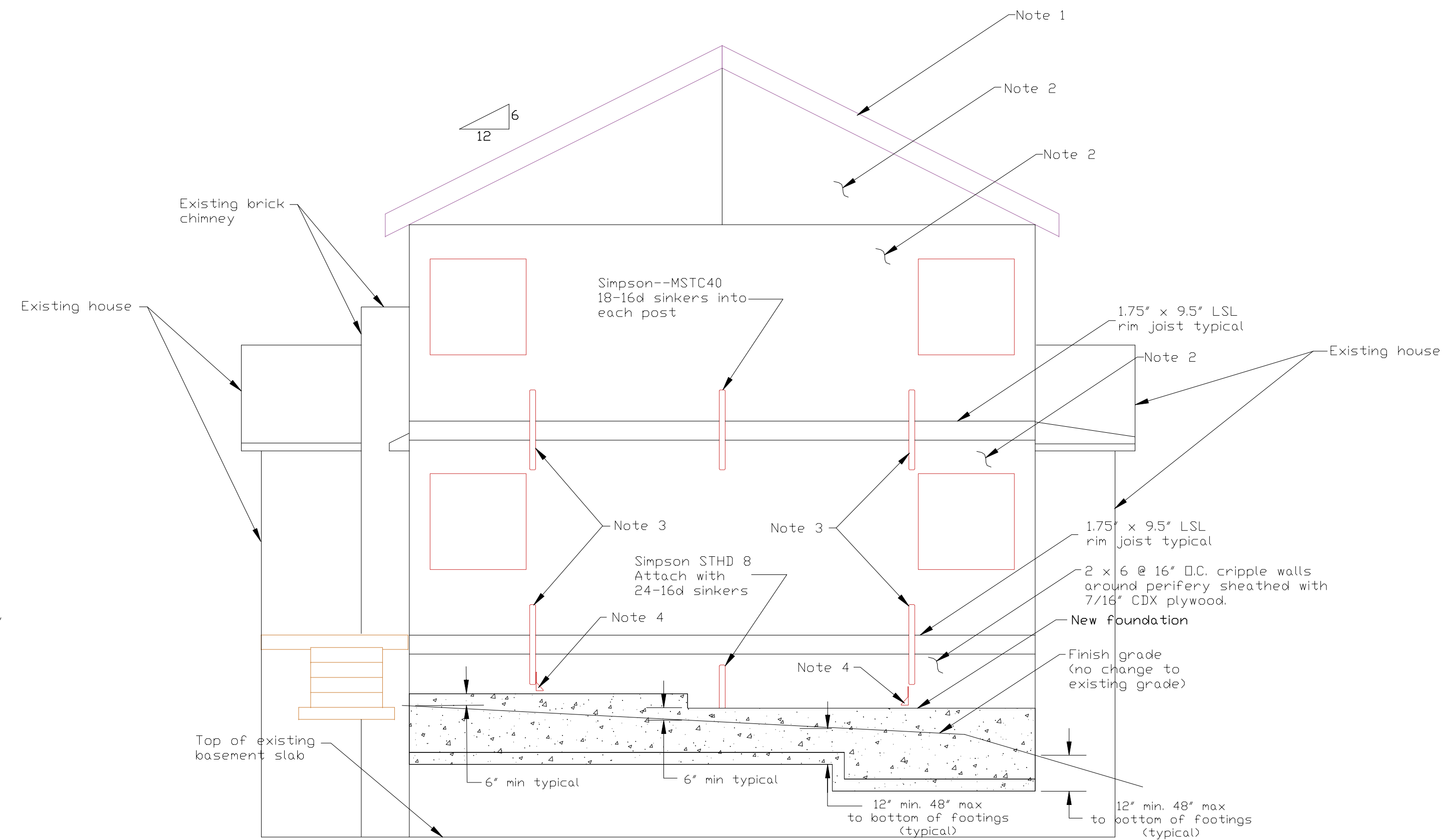
Note 2:
Structural Insulated Panels
by Premier Building Systems.
5-1/2" core with 7/16" thick
plywood sheathing on both sides.
Each panel joined at edges with
1.5" x 5.5" #2 Fir or better.
R=24. See sheet S-7 for
installation details. Website:
www.premier-industries.com/pbs/default.aspx

Note 3:
Simpson--MSTC40. Install 18-16d sinkers into
both sides of rim joist into 3 1/2" thick posts.
Fasteners not required through rim joist.

Note 4:
Install 5/8" dia Simpson RFB#5 X 16 threaded rod into
3/4" dia holes in concrete using Simpson SETepoxy-tie
adhesive. 12" min embedment.

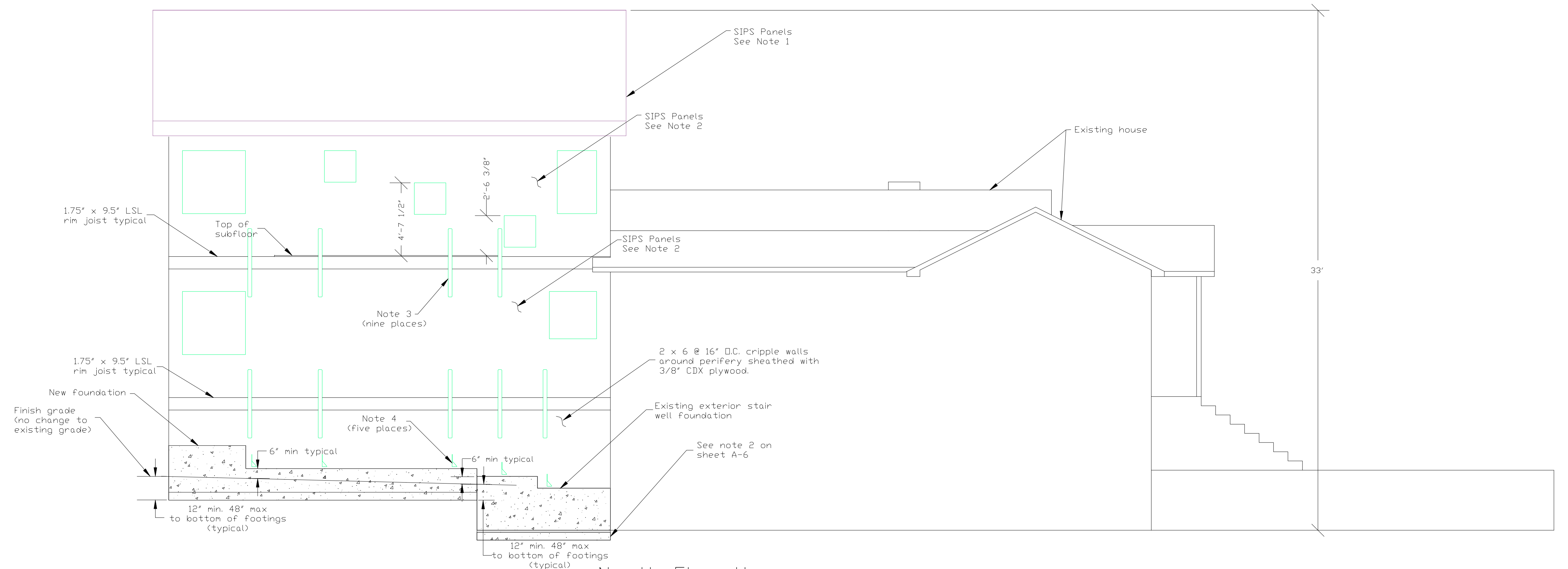
Simpson HD5A: Attach to 3 1/2" thick post with two 3/4"
Dia bolts.

Nuts should be finger-tight
plus 1/3 to 1/2 turn with a hand wrench, with
consideration given to possible future wood shrinkage.
Care should be taken to not over-torque the nut.
Impact wrenches should not be used.



East Elevation

Scale: 1/4" = 1'- 0"



North Elevation

Scale: 1/4" = 1'- 0"

ELEVATIONS

DATE: 7/23/06

REVISION: New

A-2