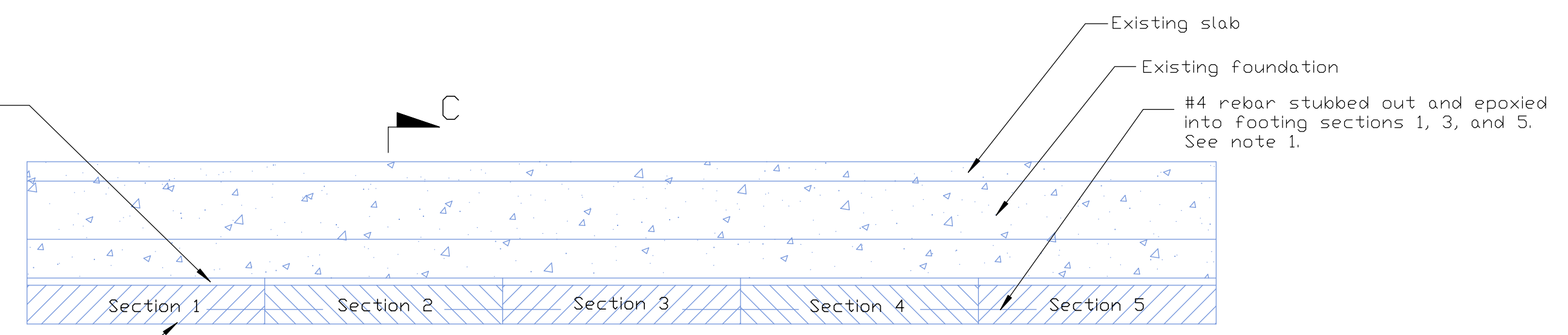


Non-shrink packing material between existing footing and new. See Note 1

New footings (sections 1-5) poured under existing footing. Make certain footings rest on undisturbed soil. See note 1.



BB  
Scale 1/4" = 6'

Note 1:  
Excavate sections 1, 3, and 5 first, leaving soil under sections 2 and 4. Do not allow soil under footings to be undermined. Pour footings and allow to cure 5 days. Make certain footings rest on undisturbed soil.

Leave a 15" gap between new footing and existing footing. After footing has cured, pack this gap with suitable non-shrinking dry packing material such as PAC-IT using a hardwood board and hammer.

After packing material has cured (per manufacturer's instructions), excavate sections 2 and 4. Rotohammer into cured footing and install to a min depth of 12", three 24" long # 4 rebar using high strength epoxy per manufacturer's instructions (typical 4 places).

Pour footings in sections 2 and 4 using same instructions as used for sections 1, 3, and 5.

Note 2:  
Min. 5/8" dia, 6' D.C. max. with a minimum of two (2) bolts per piece of plate and at least one (1) bolt within 12" at end of each piece. Use 1/4" x 2" x 2" plate washers.

Rotohammer through existing slab and into existing footing. Use Simpson SETepoxy-tie adhesive. 7" min embedment into existing stem wall underneath slab.

Note 3:  
Remove siding from exterior walls and install 3/8" CDX sheathing using 6d common nails spaced 6' D.C. along edges and 12' D.C. through intermediate supports.

Note 4:  
Tie existing sill plates to existing foundation using Simpson UFP10-SDS3 fittings.

Use (2) 3/8" x 3' THD37300H bolts in stem wall and (5) SDS 1/4" x 3" screws in plate.

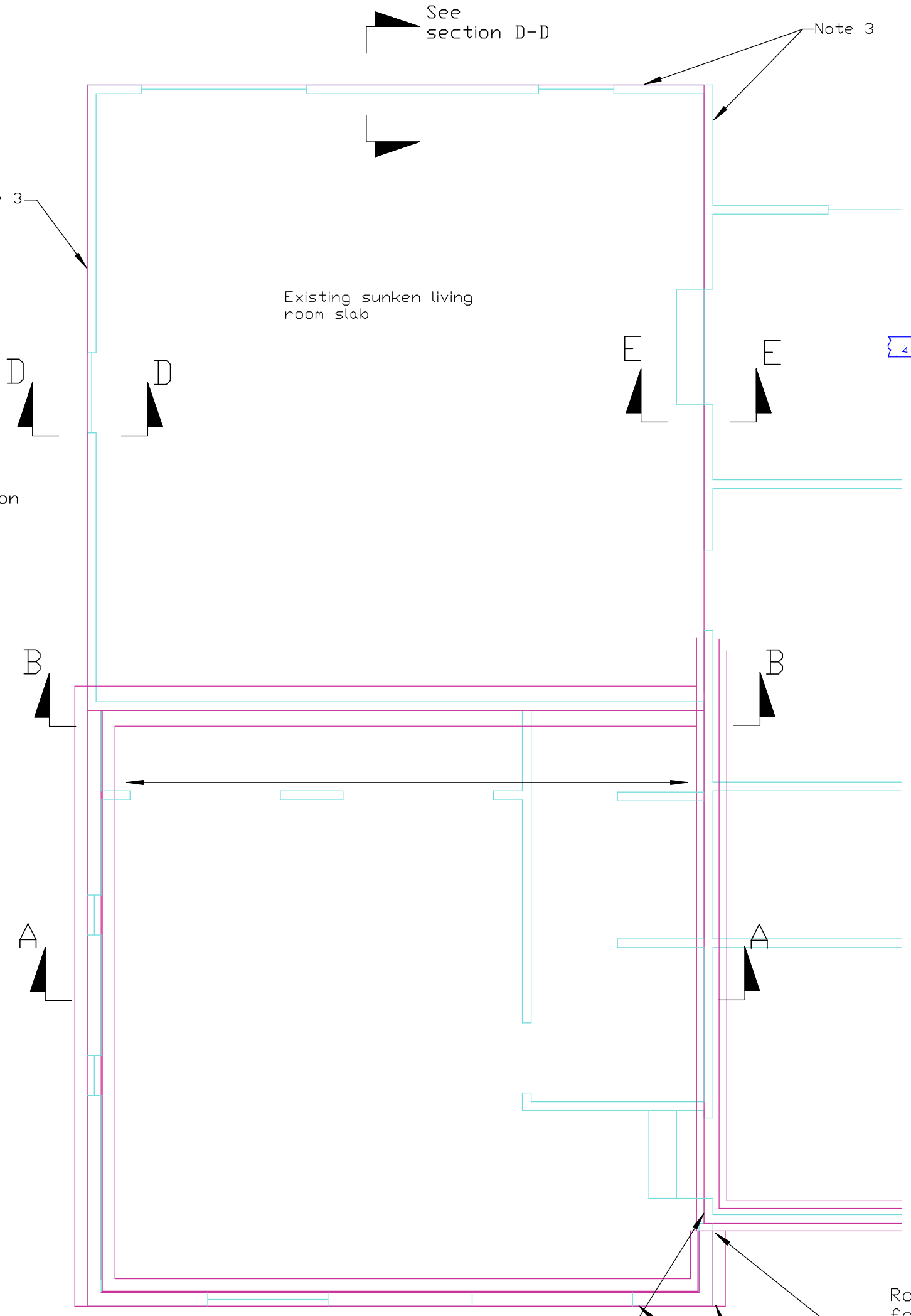
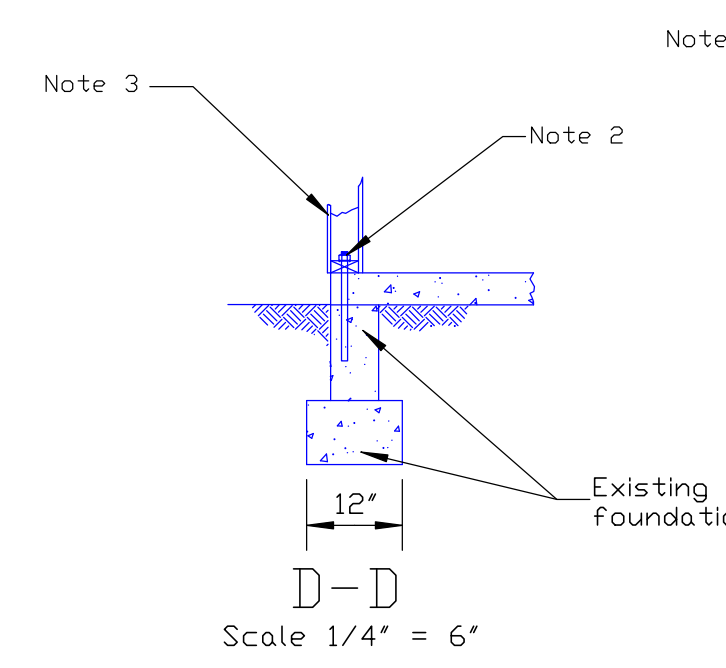
Install 6' D.C. max. with a minimum of two (2) fittings per piece of plate and at least one (1) fitting within 12" at end of each piece.

Note 5: min of 12" below grade

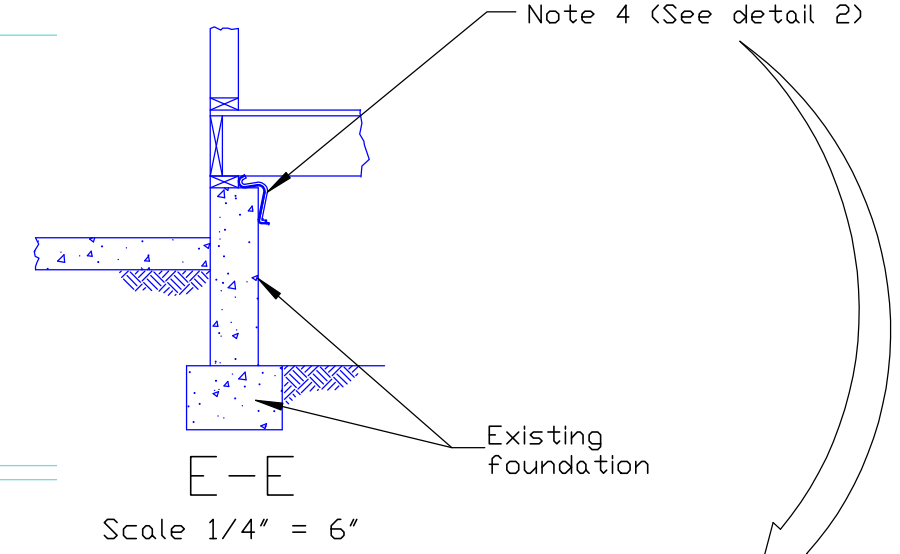
Note 6: Min of 18" crawl through clearance.

Note 7: Min. 5/8" x 10", 6' D.C. max. with a minimum of two (2) bolts per piece of plate and at least one (1) bolt within 12" at end of each piece. Use 1/4" x 2" x 2" plate washers. Min 7" embedment.

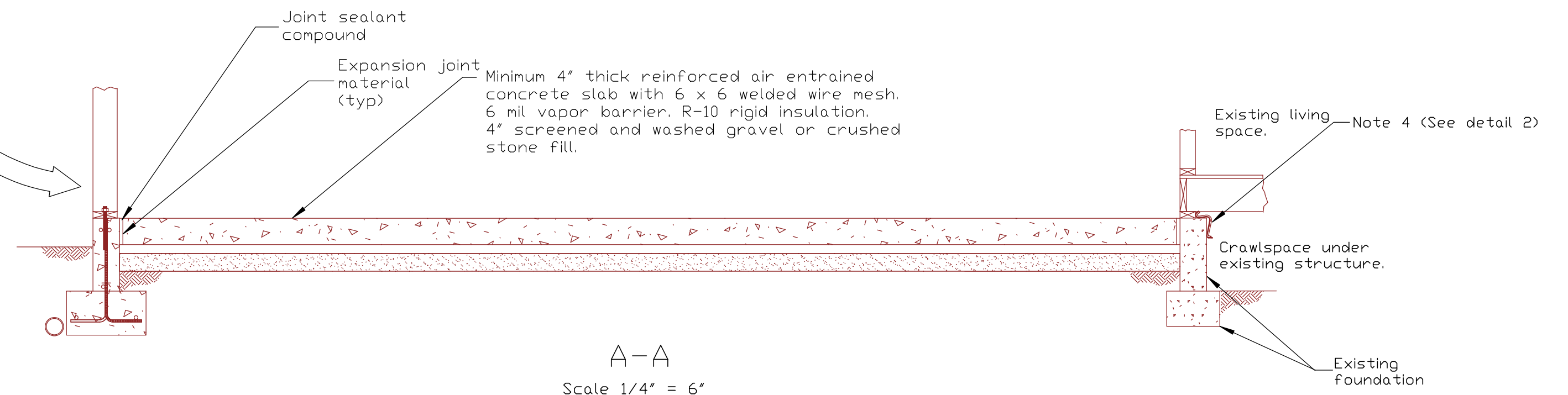
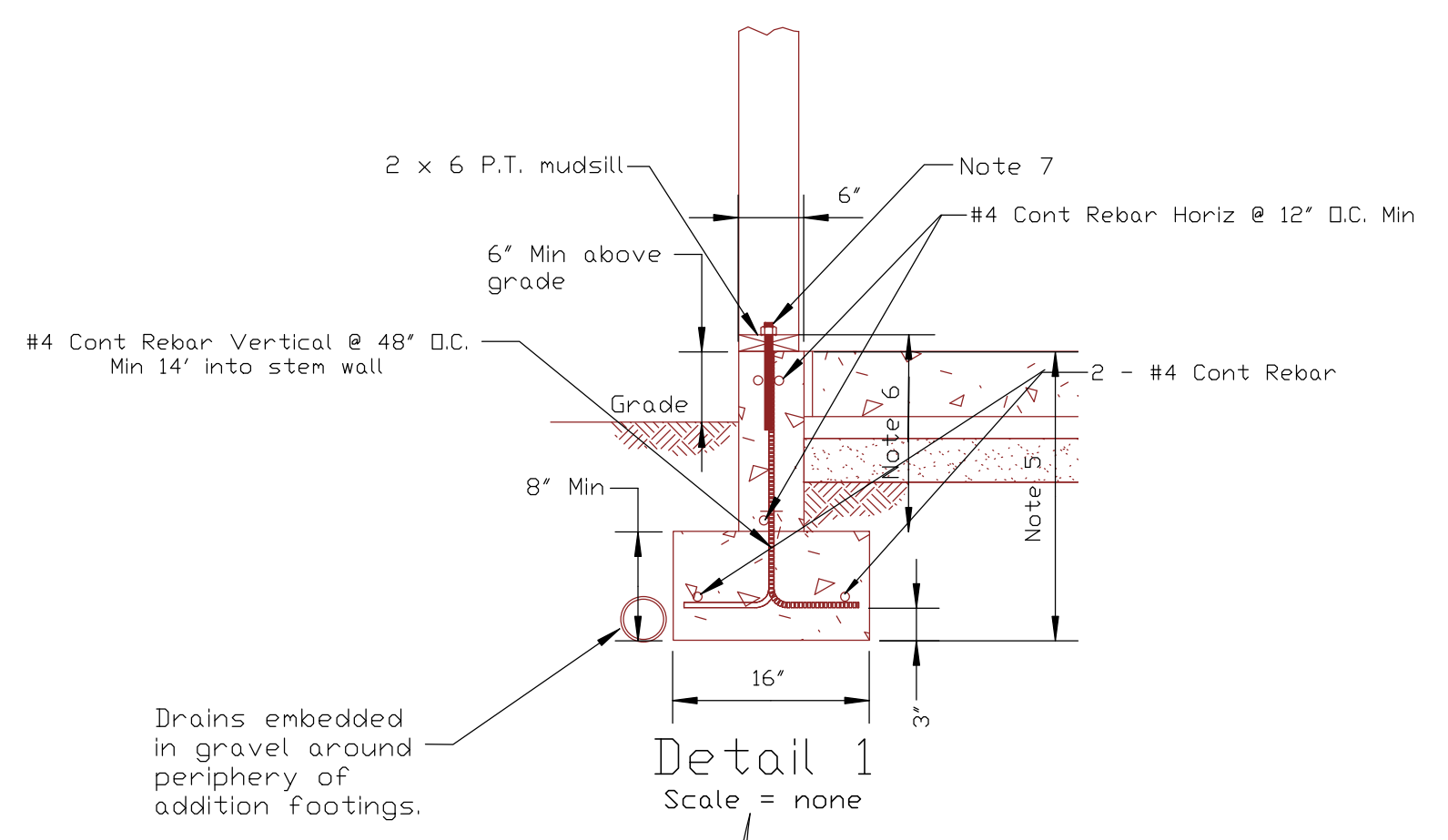
Scale 1/4" = 6'



FIRST FLOOR FRAMING & FOUNDATION  
Scale 1/4" = 1'



Detail 2



Framing

DATE: X/XX/XX	
REVISION:	New