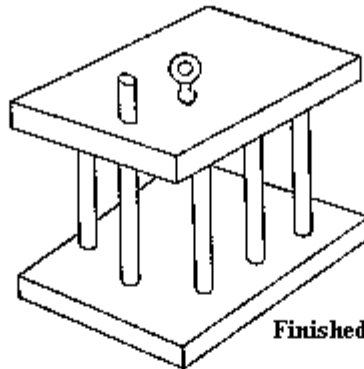
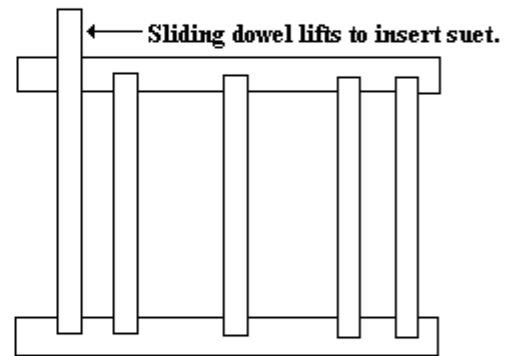
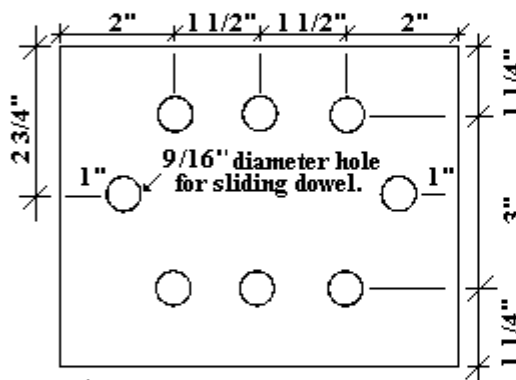


Dowel Suet Feeder

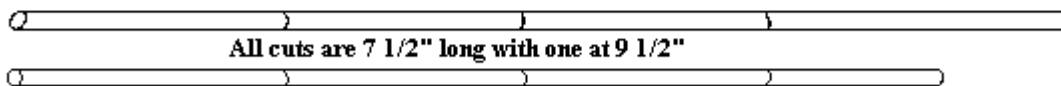
Dowel Suet Feeder



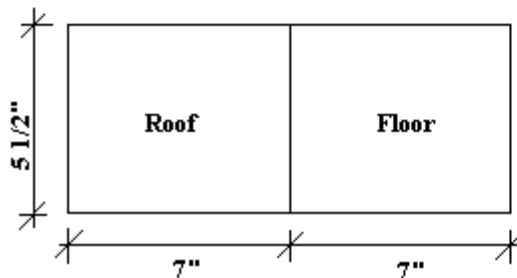
Finished dowel suet feeder.



This diagram shows placement of dowel holes on the top and bottom pieces. Holes are 1/2" diameter and 1/2" deep, except that the floor hole for the sliding dowel is 1/2" deep, but the sliding dowel penetrates the roof and is lifted to insert suet.



1/2" diameter dowels.



Materials:

- wood glue
- 1" x 6" - 14"
- 2 - 1/2" x 36" dowels
- eye screw (3/4" long)